

March 5, 2014

## SAMPLE REPORT

### Computerized Analysis of Polypeptides Resolved by 2D Electrophoresis and Western Blotting for sample:

*K12 MG1655 E.coli versus  
Cygnus Goat anti-E.coli HCP antibody (Cat # AP117)*

Prepared for: Kendrick Laboratories, Inc  
1202 Ann Street  
Madison, WI 53713

By: Kendrick Laboratories, Inc  
1202 Ann Street  
Madison, WI 53713  
1 800 462-3417

Report Prepared by: Christina Rose Date: 3/5/14  
Christina Rose, 2D Analyst, Kendrick Labs Inc

Approved by: Matt Hoelter Date: 3/5/14  
Matt Hoelter, Western Blot Manager, Kendrick Labs Inc

Nancy Kendrick Date: 3/5/14  
Nancy Kendrick, PhD, QA Manager, Kendrick Labs Inc

#### Samples Compared:

1. Silver-stained 2D gel of K12 MG1655 *E. coli* (LF 762 #12-13)  
vs. western blot film from Cygnus Goat anti-*E.coli* antibody against K12 MG1655 *E. coli* (LF 762 #8)

<u>Page</u>	<u>Contents</u>
2 - 5	Images showing spot differences and sample overlay of comparison 1 (Figs 1 - 4).
6 - 7	Images showing all spot numbering (Figs 5 - 6).
8 - 10	Images without spot circling (Figs 7 - 9).
11 - 43	Summary table showing spot percentage, pI and MW (Table 1).
44, 45	Methods and pH Gradient.
46	Western blotting checksheet
CD	Containing electronic copies of report, Excel data, and gel images.

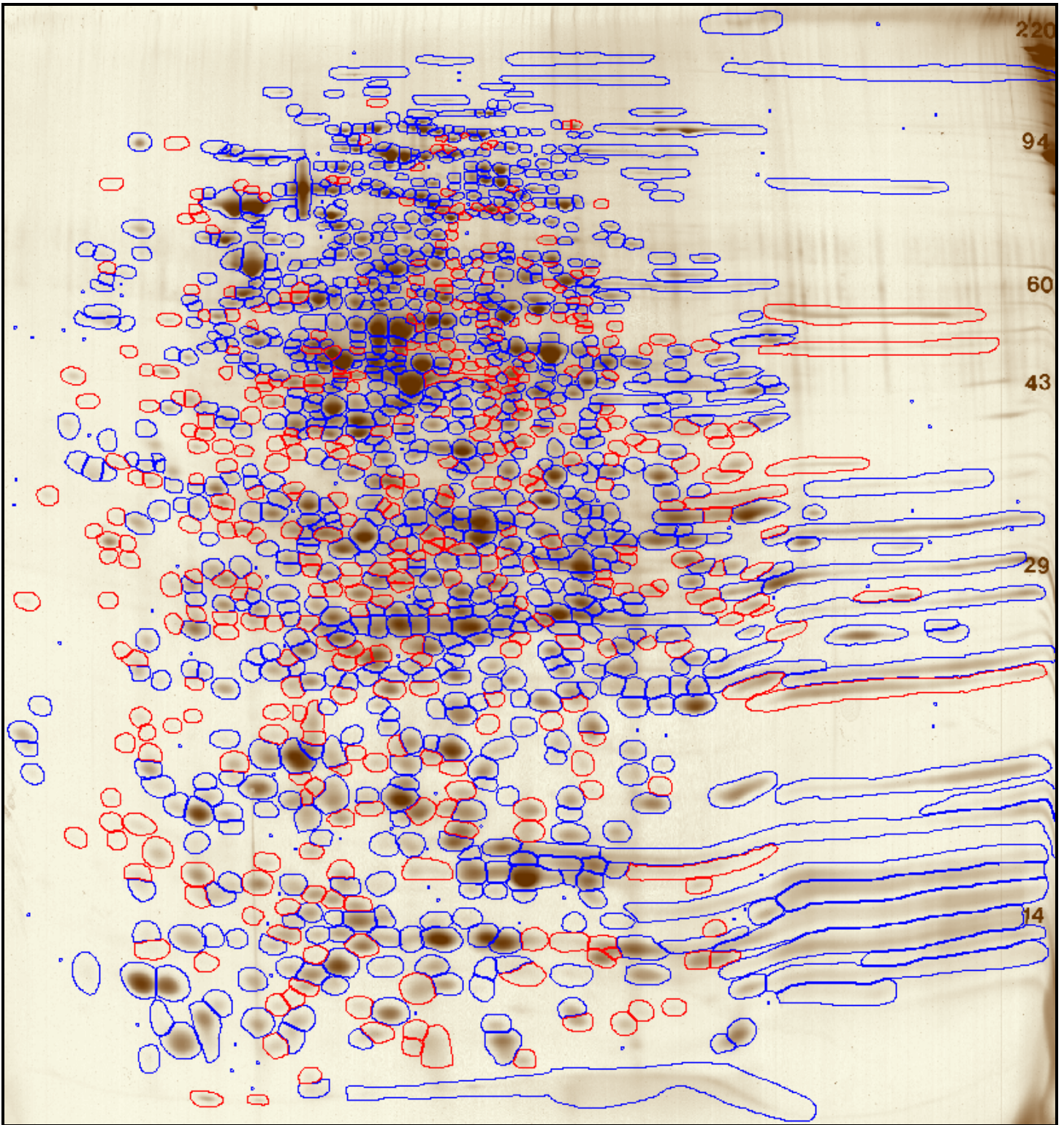


Figure 1. Image of **K12 MG1655 *E. coli*** silver-stained gel (LF 762 #13) showing Cygnus Goat anti-*E. coli* antibody western blot (LF 762 #8) matches. Spots present on the silver-stained gel but missing from the western blot are outlined in **red**. Spots present in both the silver-stained gel and the western blot are outlined in **blue**. Spots detected with the antibody but not detectable by silver staining are indicated with small blue dots on the silver-stained gel and added to the total spot number. The Cygnus Goat anti-*E. coli* antibody detected **993 spots out of 1400 spots (71%)** found. Spot numbering is provided in Figures 5 and 6; spot data is provided in Table 1.



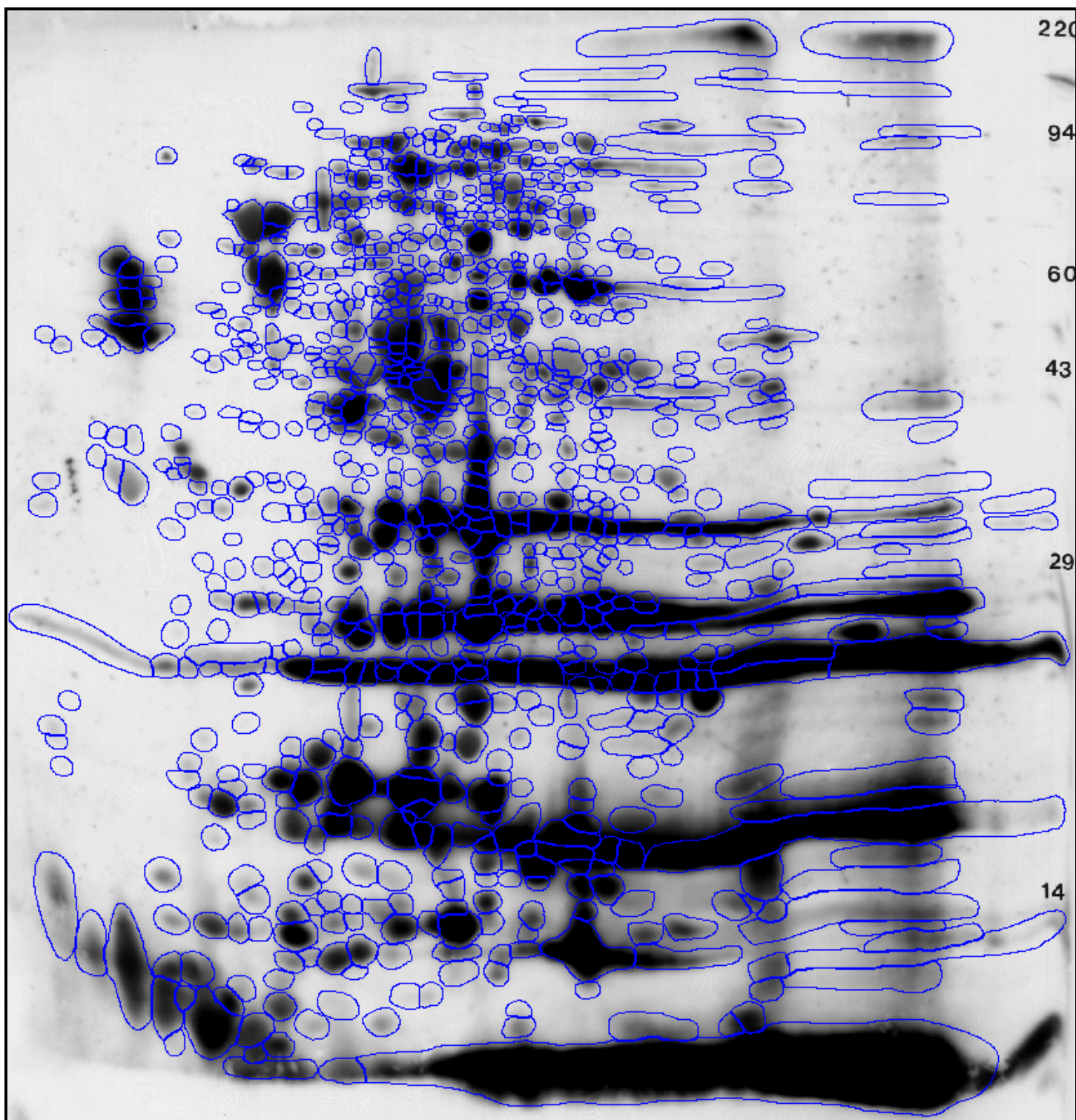


Figure 2. Dark western blot film image of Cygnus Goat anti-*E. coli* antibody against K12 MG1655 *E. coli* (LF 762 #8, 3 minute exposure). All spots detected on the dark and light exposures of the western blot are outlined in **blue**. The Cygnus Goat anti-*E. coli* antibody detected **993 spots**. Spot circling of the overexposed areas of the film can be more clearly seen on the light exposure film (Figure 3). Spot numbering is provided in Figures 5 and 6; spot data is provided in Table 1.

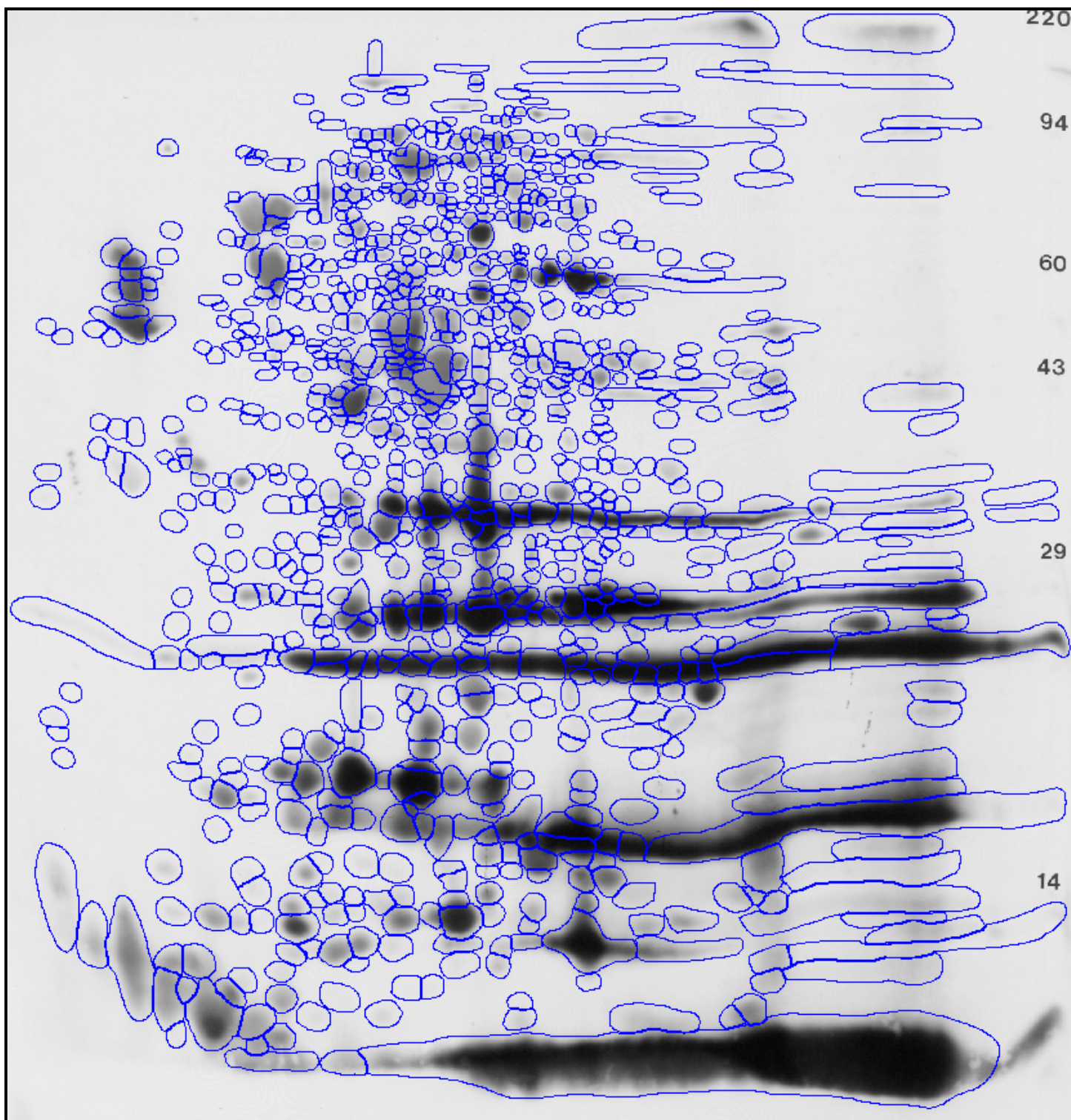


Figure 3. Light western blot film image of Cygnus Goat anti-*E. coli* antibody against K12 MG1655 *E. coli* (LF 762 #8, 1 minute exposure). All spots detected on the dark and light exposures of the western blot are outlined in **blue**. The Cygnus Goat anti-*E. coli* antibody detected **993 spots**. Spot numbering is provided in Figures 5 and 6; spot data is provided in Table 1.



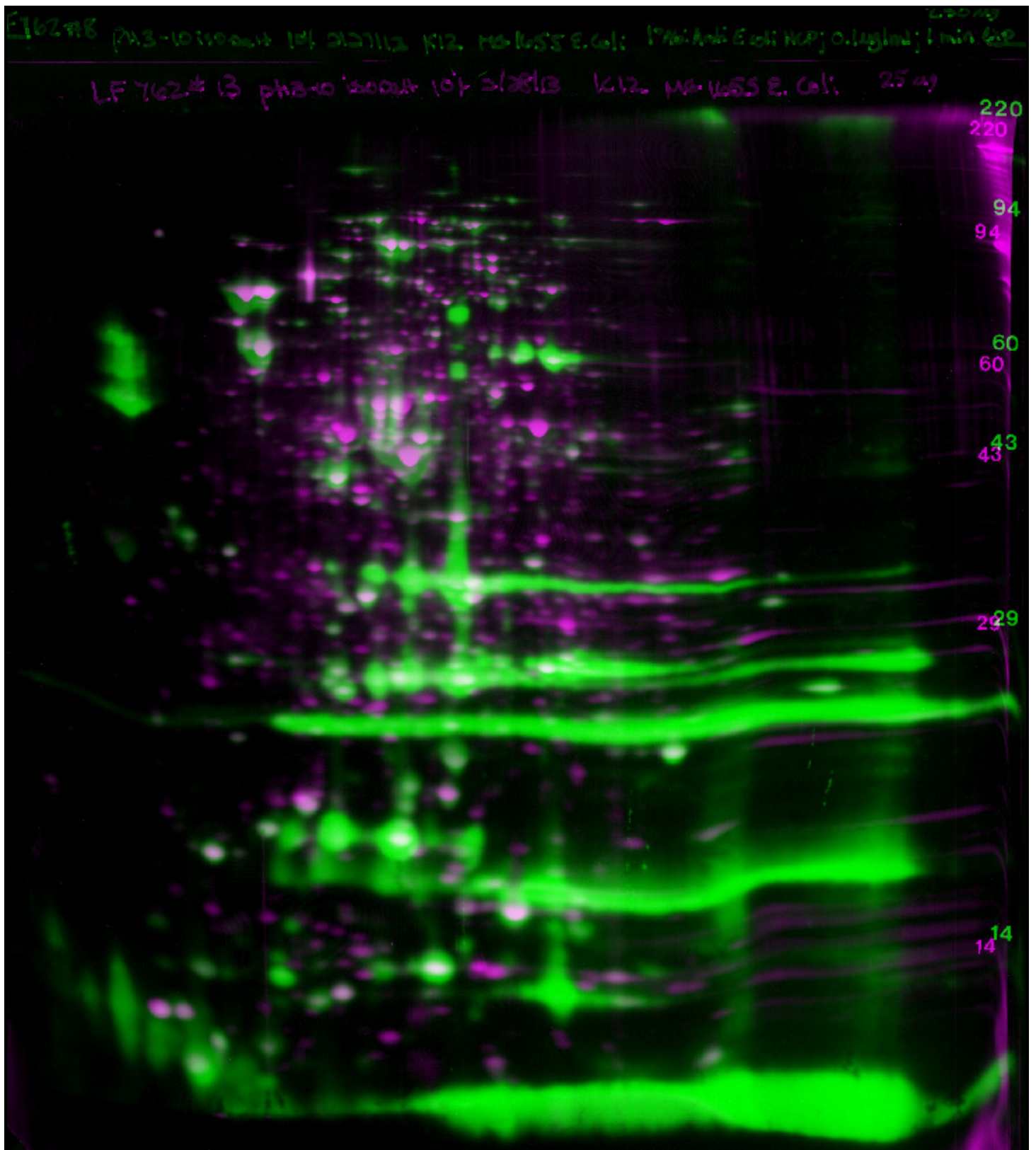


Figure 4. Overlay image showing silver-stained 2D gel of K12 MG1655 *E. coli* (LF 762 #13) in magenta overlaying western blot film image of Cygnus Goat anti-*E. coli* antibody against K12 MG1655 *E. coli* (LF 762 #8, 1 minute exposure) in green. Image appears white where spots of similar intensity overlay each other.



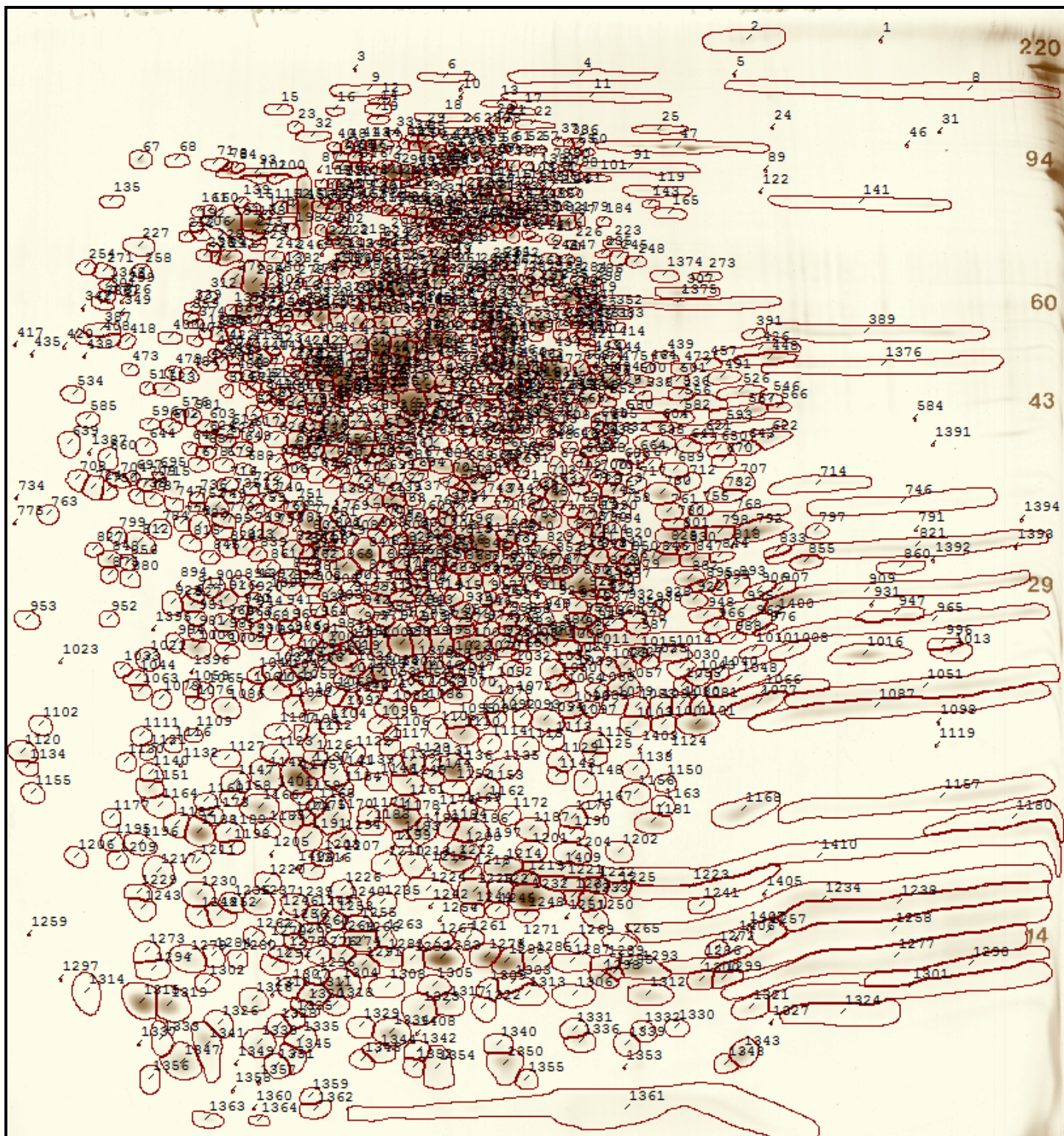


Figure 5. All spot numbering for silver-stained gel image of K12 MG1655 *E. coli* (LF 762 #13). Spots detected with an antibody but not detectable by silver staining are indicated with small dots on the silver-stained gel. Magnified images to show greater detail will be provided on request. Spot data, including pI and MW can be found in Table 1.



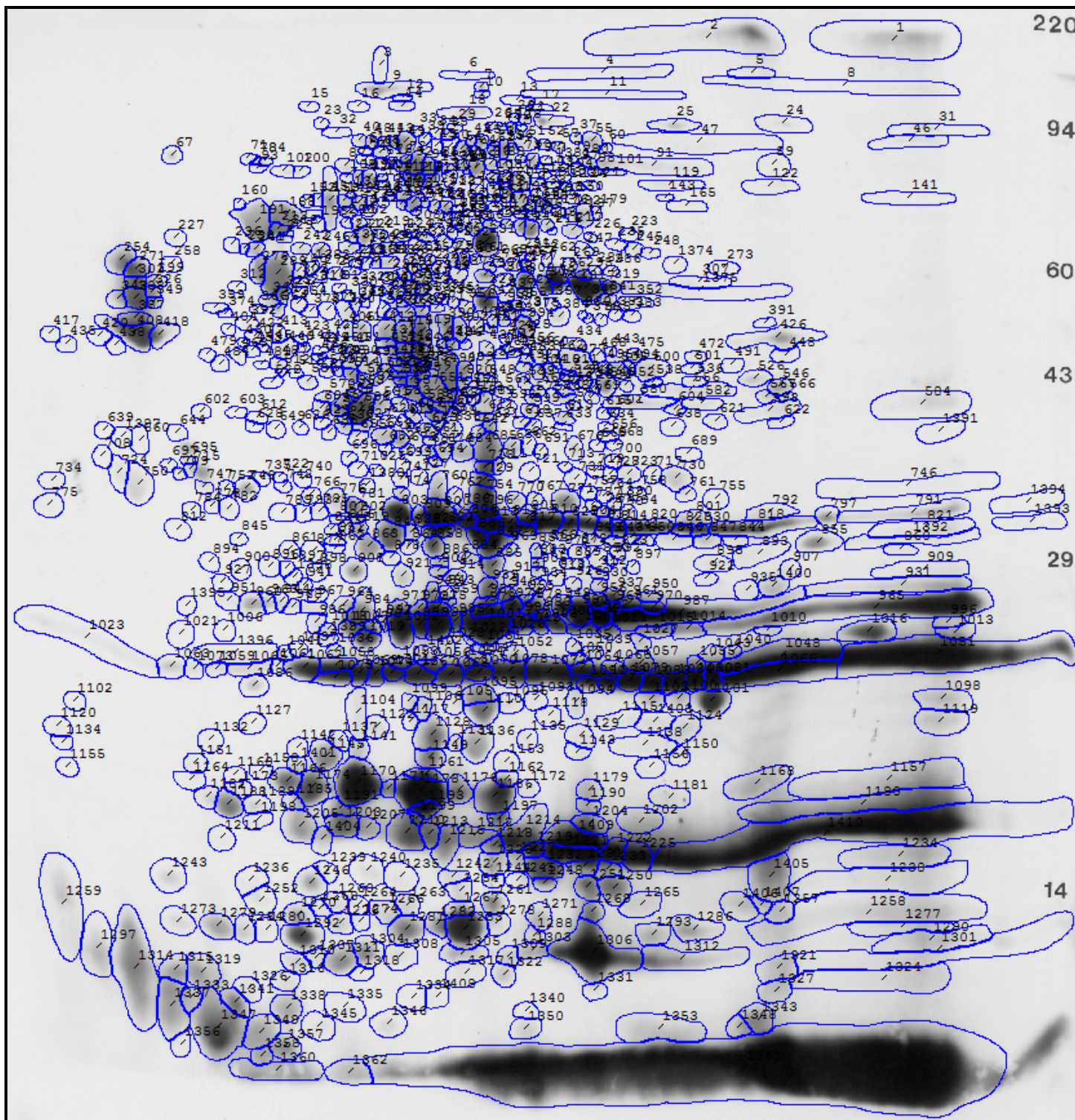


Figure 6. All spot numbering for western blot film image of Cygnus Goat anti-*E. coli* antibody against K12 MG1655 *E. coli* (LF 762 #8, 1 minute exposure). Magnified images to show greater detail will be provided on request. Spot data, including pI and MW can be found in Table 1.





Figure 7. Image of silver-stained gel of K12 MG1655 *E. coli* (LF 762 #13).



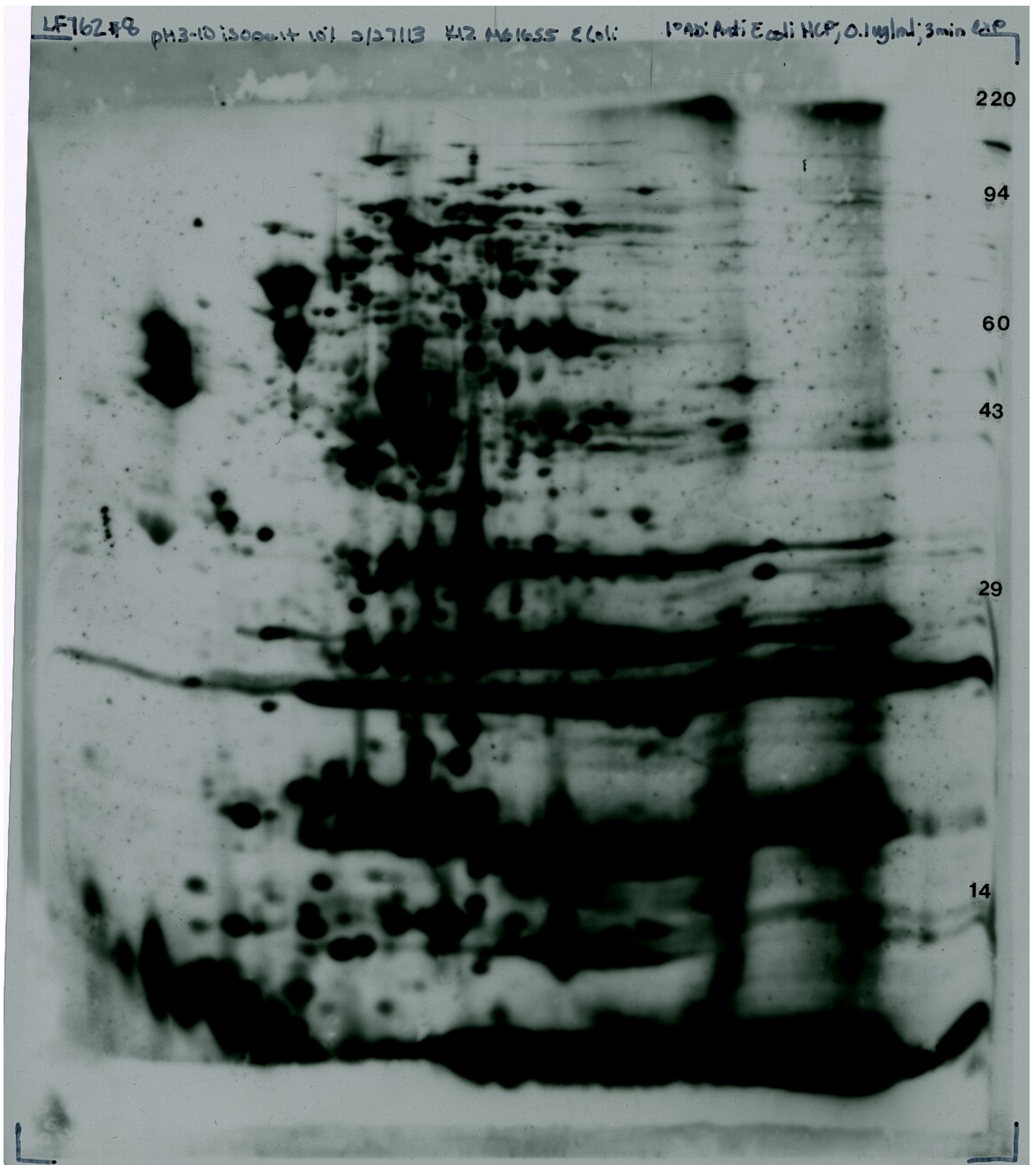


Figure 8. Dark image of western blot film Cygnus Goat anti-*E. coli* antibody against K12 MG1655 *E. coli* (LF 762 #8, 3 minute exposure).

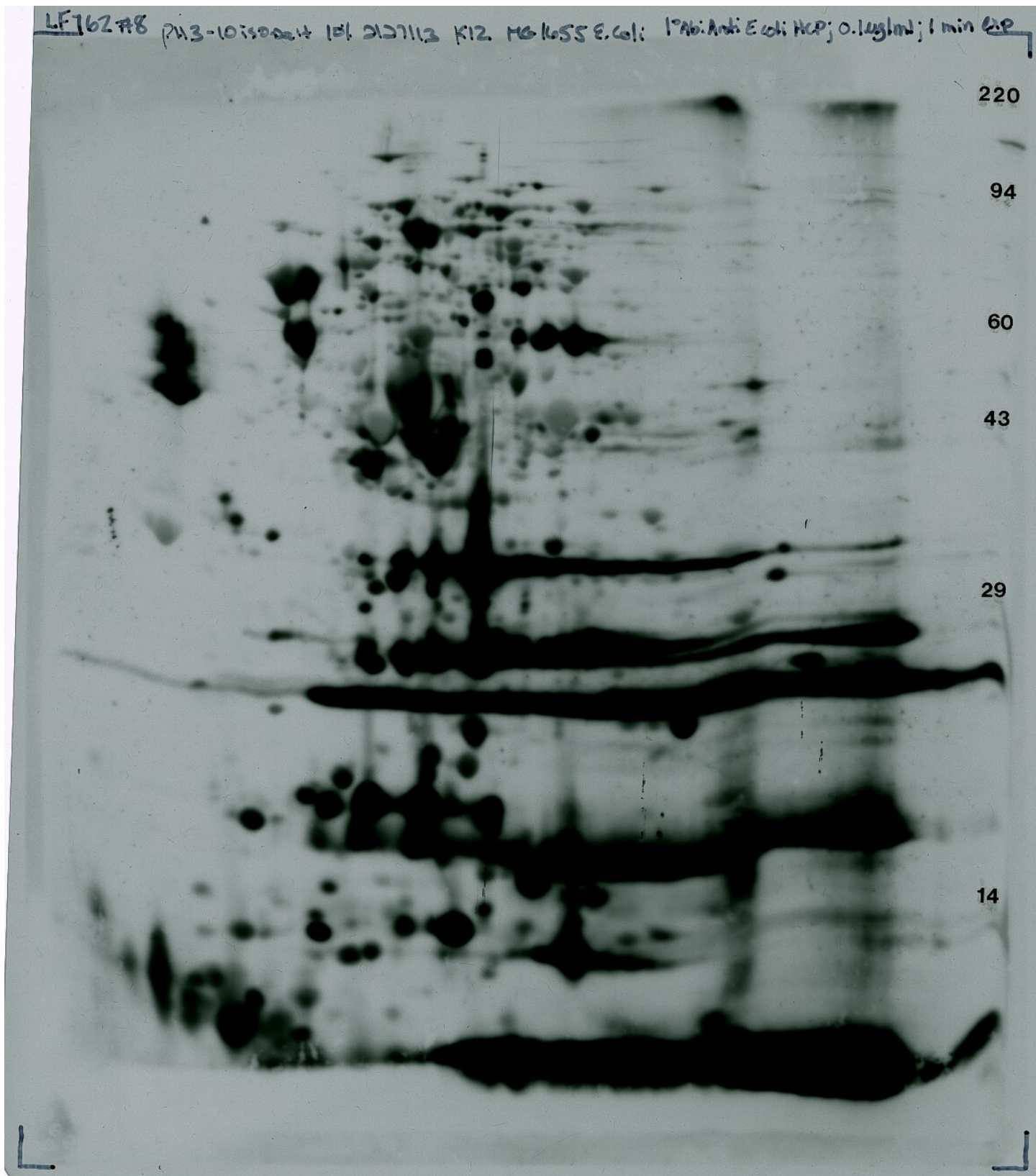


Figure 9. Light image of western blot film Cygnus Goat anti-*E. coli* antibody against K12 MG1655 *E. coli* (LF 762 #8, 1 minute exposure).



Table 1. Summary of protein spot data for 2D gel comparison of K12 MG1655 *E. coli* versus Cygnus Goat anti-*E. coli* antibody. Reference spot numbering, pI, MW, and spot percentage are given for polypeptide spots analyzed in silver-stained gels of **K12 MG1655 *E. coli*** (LF 762 #12-13) and western blot film from **Cygnus Goat anti-*E. coli* antibody** (LF 762 #8, 3 minute exposure). Spot percentages are given to indicate relative abundance. A total of **1400** spots were analyzed. Nd = pI/MW not determined. All spot data is given on the CD.

Spot #	pI	MW	K12 MG1655 <i>E. coli</i> LF 762 #12 silver gel Spot %	K12 MG1655 <i>E. coli</i> LF 762 #13 silver gel Spot %	Average K12 MG1655 <i>E. coli</i> silver gels Spot %	Cygnus Goat anti- <i>E. coli</i> wb of K12 MG1655 LF 762 #8 Spot %
1	nd	nd	0.000	0.000	0.000	1.058
2	nd	nd	0.144	0.134	0.139	1.058
3	5.9	217,372	0.000	0.000	0.000	0.020
4	6.8	203,749	0.131	0.054	0.093	0.041
5	7.4	208,631	0.000	0.000	0.000	0.014
6	6.2	201,857	0.007	0.012	0.009	0.018
7	6.3	194,289	0.000	0.000	0.000	0.018
8	8.1	192,506	0.296	0.858	0.577	0.094
9	5.9	192,514	0.028	0.041	0.035	0.197
10	6.3	188,612	0.000	0.000	0.000	0.011
11	6.8	188,612	0.098	0.062	0.080	0.037
12	6.0	186,064	0.004	0.003	0.003	0.003
13	6.4	184,450	0.005	0.005	0.005	0.007
14	5.9	180,372	0.015	0.012	0.014	0.019
15	5.6	179,993	0.014	0.013	0.013	0.005
16	5.8	179,993	0.004	0.004	0.004	0.003
17	6.5	179,152	0.012	0.005	0.008	0.002
18	6.2	175,746	0.051	0.025	0.038	0.086
19	5.9	173,163	0.005	0.003	0.004	-
20	6.4	172,340	0.007	0.002	0.004	0.004
21	6.5	171,584	0.020	0.007	0.013	0.021
22	6.6	170,448	0.049	0.016	0.032	0.095
23	5.7	168,230	0.004	0.004	0.004	0.002
24	7.5	150,953	0.000	0.000	0.000	0.051
25	7.1	149,713	0.046	0.053	0.049	0.077
26	6.3	166,286	0.017	0.019	0.018	0.004
27	6.4	166,286	0.028	0.032	0.030	0.008
28	6.4	166,286	0.012	0.006	0.009	0.004
29	6.1	165,907	0.017	0.018	0.017	0.005
30	6.4	165,907	0.058	0.058	0.058	0.022
31	8.1	145,371	0.000	0.000	0.000	0.056
32	5.7	162,539	0.037	0.023	0.030	0.006
33	6.0	163,767	0.002	0.001	0.001	0.005
34	6.1	161,366	0.013	0.010	0.012	0.008
35	6.1	160,609	0.036	0.042	0.039	0.017
36	6.8	160,231	0.062	0.034	0.048	-
37	6.7	158,717	0.009	0.003	0.006	0.006
38	6.7	158,717	0.026	0.011	0.018	-

Spot #	pI	MW	K12 MG1655 <i>E. coli</i> LF 762 #12 silver gel Spot %	K12 MG1655 <i>E. coli</i> LF 762 #13 silver gel Spot %	Average K12 MG1655 <i>E. coli</i> silver gels Spot %	Cygnus Goat anti- <i>E. coli</i> wb of K12 MG1655 LF 762 #8 Spot %
39	6.0	157,204	0.024	0.012	0.018	0.003
40	5.8	155,709	0.024	0.014	0.019	0.018
41	5.9	155,709	0.031	0.025	0.028	0.020
42	6.2	156,068	0.006	0.006	0.006	0.015
43	5.9	155,330	0.042	0.042	0.042	0.017
44	6.0	155,330	0.125	0.144	0.135	0.084
45	6.3	155,690	0.011	0.011	0.011	0.045
46	7.9	130,487	0.000	0.000	0.000	0.064
47	7.2	129,867	0.553	0.551	0.552	0.079
48	5.8	154,571	0.060	0.049	0.054	0.025
49	6.1	154,555	0.067	0.063	0.065	0.002
50	6.1	154,176	0.163	0.193	0.178	0.001
51	6.5	154,176	0.013	0.006	0.009	0.037
52	6.5	153,798	0.013	0.006	0.010	0.016
53	6.3	153,419	0.039	0.037	0.038	0.003
54	6.2	153,041	0.042	0.067	0.054	0.040
55	6.8	153,041	0.005	0.003	0.004	0.096
56	6.4	152,284	0.018	0.010	0.014	0.016
57	6.6	152,284	0.016	0.006	0.011	0.022
58	6.3	151,527	0.007	0.005	0.006	-
59	6.4	151,527	0.131	0.132	0.131	0.036
60	6.8	151,527	0.006	0.005	0.006	0.004
61	5.8	148,879	0.014	0.009	0.012	0.003
62	6.3	149,257	0.037	0.038	0.037	0.016
63	6.2	148,878	0.012	0.015	0.013	-
64	6.3	148,878	0.028	0.042	0.035	0.011
65	5.9	148,121	0.041	0.040	0.040	0.019
66	5.9	148,121	0.005	0.004	0.005	-
67	4.9	112,987	0.072	0.077	0.074	0.039
68	5.2	145,844	0.007	0.003	0.005	-
69	6.4	146,229	0.000	0.001	0.001	-
70	6.4	143,959	0.003	0.002	0.002	-
71	5.4	143,188	0.008	0.006	0.007	0.005
72	6.0	143,188	0.020	0.019	0.019	0.007
73	6.4	143,581	0.016	0.013	0.015	0.006
74	5.8	142,809	0.031	0.039	0.035	0.002
75	6.5	142,824	0.048	0.052	0.050	0.044
76	5.9	142,050	0.015	0.009	0.012	0.002
77	6.6	142,445	0.009	0.005	0.007	0.001
78	5.4	141,670	0.003	0.003	0.003	0.002
79	6.7	142,067	0.013	0.005	0.009	0.006
80	6.7	142,067	0.034	0.020	0.027	0.024
81	5.9	141,291	0.033	0.070	0.051	0.006



Spot #	pI	MW	K12 MG1655 <i>E. coli</i> LF 762 #12 silver gel Spot %	K12 MG1655 <i>E. coli</i> LF 762 #13 silver gel Spot %	Average K12 MG1655 <i>E. coli</i> silver gels Spot %	Cygnus Goat anti- <i>E. coli</i> wb of K12 MG1655 LF 762 #8 Spot %
82	6.2	141,688	0.008	0.012	0.010	-
83	6.2	141,688	0.019	0.026	0.022	-
84	5.4	140,911	0.010	0.012	0.011	0.009
85	6.1	139,796	0.010	0.011	0.010	0.004
86	6.3	139,796	0.020	0.014	0.017	0.020
87	5.7	139,014	0.000	0.000	0.000	0.028
88	6.4	139,418	0.018	0.014	0.016	0.025
89	7.4	103,819	0.000	0.000	0.000	0.013
90	6.2	139,040	0.016	0.018	0.017	0.019
91	7.0	103,199	0.095	0.106	0.100	0.216
92	6.0	137,876	0.469	0.562	0.516	0.103
93	5.5	137,497	0.095	0.105	0.100	0.011
94	6.1	137,526	0.235	0.296	0.265	0.026
95	6.3	137,526	0.087	0.097	0.092	0.080
97	6.7	136,769	0.009	0.007	0.008	0.007
98	6.8	135,634	0.008	0.009	0.008	0.012
99	6.2	134,877	0.003	0.007	0.005	0.003
100	5.6	132,276	0.025	0.019	0.022	0.012
101	6.8	134,499	0.009	0.010	0.009	0.007
102	5.5	131,939	0.019	0.019	0.019	0.016
103	6.5	132,606	0.014	0.014	0.014	0.003
104	6.6	131,850	0.031	0.025	0.028	0.013
105	5.7	128,903	0.011	0.006	0.008	0.007
106	5.9	128,903	0.007	0.007	0.007	0.006
107	6.1	130,268	0.000	0.000	0.000	0.020
108	6.3	130,268	0.023	0.022	0.023	0.003
109	5.8	128,566	0.025	0.018	0.021	0.020
110	5.8	128,229	0.078	0.110	0.094	0.084
111	6.4	129,583	0.046	0.093	0.070	0.008
112	5.9	127,892	0.019	0.016	0.018	0.004
113	6.1	129,240	0.008	0.006	0.007	0.037
114	6.0	127,554	0.047	0.046	0.047	0.059
115	6.4	127,869	0.204	0.256	0.230	0.071
116	6.5	127,526	0.020	0.018	0.019	0.008
117	5.9	125,194	0.007	0.005	0.006	0.002
118	6.6	125,812	0.008	0.010	0.009	0.007
119	7.1	90,971	0.033	0.040	0.037	0.031
120	6.4	125,469	0.008	0.017	0.013	0.003
121	6.7	125,469	0.014	0.010	0.012	0.006
122	7.5	90,532	0.000	0.000	0.000	0.030
123	6.6	124,441	0.008	0.006	0.007	0.003
124	6.7	124,441	0.023	0.021	0.022	0.010
125	6.0	123,412	0.004	0.004	0.004	0.001

Spot #	pI	MW	K12 MG1655 <i>E. coli</i> LF 762 #12 silver gel Spot %	K12 MG1655 <i>E. coli</i> LF 762 #13 silver gel Spot %	Average K12 MG1655 <i>E. coli</i> silver gels Spot %	Cygnus Goat anti- <i>E. coli</i> wb of K12 MG1655 LF 762 #8 Spot %
126	6.3	123,412	0.059	0.065	0.062	0.007
127	6.3	123,069	0.027	0.018	0.022	0.004
128	5.8	120,810	0.007	0.006	0.006	-
129	5.8	120,135	0.004	0.006	0.005	-
130	5.9	119,798	0.003	0.003	0.003	0.003
131	6.4	120,670	0.103	0.120	0.112	0.022
132	6.1	120,327	0.010	0.006	0.008	0.002
133	6.5	120,327	0.026	0.019	0.022	0.005
134	6.4	119,984	0.214	0.239	0.226	0.059
135	nd	nd	0.004	0.003	0.003	-
136	5.8	118,449	0.005	0.005	0.005	0.002
137	6.2	119,298	0.037	0.045	0.041	0.017
138	5.9	117,774	0.029	0.036	0.033	0.021
139	5.5	117,100	0.005	0.003	0.004	-
140	5.9	116,763	0.007	0.006	0.007	0.003
141	7.9	87,606	0.120	0.080	0.100	0.013
142	6.3	117,584	0.002	0.002	0.002	0.001
143	7.1	87,460	0.006	0.006	0.006	0.002
144	6.3	117,242	0.007	0.007	0.007	0.003
145	5.6	115,076	0.060	0.070	0.065	0.010
146	5.8	115,076	0.017	0.014	0.016	0.007
147	6.5	116,213	0.006	0.006	0.006	-
148	6.6	116,213	0.032	0.039	0.036	0.009
149	5.7	114,739	0.072	0.077	0.075	0.013
150	6.7	115,870	0.019	0.017	0.018	0.005
151	5.5	114,402	0.003	0.004	0.003	-
152	5.6	114,402	0.011	0.009	0.010	0.001
153	5.9	114,402	0.003	0.004	0.004	0.006
154	5.8	114,065	0.106	0.121	0.114	0.027
155	5.7	113,727	1.173	1.186	1.179	0.204
156	6.0	114,499	0.015	0.009	0.012	0.005
157	5.9	112,716	0.014	0.013	0.014	0.008
158	6.0	112,716	0.090	0.098	0.094	0.028
159	6.2	113,814	0.022	0.011	0.016	-
160	5.3	112,378	0.012	0.014	0.013	0.002
161	5.3	112,041	0.004	0.004	0.004	-
162	6.1	113,128	0.033	0.031	0.032	0.016
163	6.5	112,785	0.015	0.025	0.020	0.004
164	6.5	112,442	0.008	0.027	0.018	0.015
165	7.1	85,265	0.007	0.009	0.008	0.008
166	6.1	112,099	0.092	0.117	0.104	0.030
167	6.3	112,099	0.038	0.032	0.035	0.004
168	6.3	111,757	0.014	0.010	0.012	0.001



Spot #	pI	MW	K12 MG1655 <i>E. coli</i> LF 762 #12 silver gel Spot %	K12 MG1655 <i>E. coli</i> LF 762 #13 silver gel Spot %	Average K12 MG1655 <i>E. coli</i> silver gels Spot %	Cygnus Goat anti- <i>E. coli</i> wb of K12 MG1655 LF 762 #8 Spot %
169	6.6	111,414	0.037	0.026	0.032	0.015
170	5.5	110,018	0.005	0.003	0.004	-
171	6.0	109,680	0.007	0.008	0.008	0.008
172	6.2	110,728	0.012	0.013	0.012	0.003
173	5.7	107,657	0.000	0.000	0.000	0.018
174	6.4	108,671	0.005	0.004	0.005	0.001
175	6.1	108,329	0.007	0.009	0.008	-
176	6.6	108,329	0.014	0.008	0.011	0.002
177	6.2	107,986	0.013	0.013	0.013	0.002
178	6.4	107,986	0.023	0.018	0.021	0.004
179	6.8	107,986	0.025	0.029	0.027	0.011
180	6.1	107,643	0.021	0.022	0.021	0.009
181	5.8	106,308	0.005	0.003	0.004	0.002
182	6.7	107,300	0.061	0.058	0.059	0.016
183	6.3	106,957	0.000	0.000	0.000	0.008
184	6.9	106,957	0.009	0.008	0.009	-
185	6.2	106,615	0.070	0.091	0.080	0.002
186	6.5	106,615	0.048	0.049	0.049	0.002
187	6.7	106,615	0.212	0.231	0.222	0.073
188	5.5	104,622	0.887	1.101	0.994	0.290
189	6.6	105,586	0.007	0.005	0.006	-
190	6.4	104,901	0.028	0.033	0.031	-
191	5.4	103,610	0.622	0.764	0.693	0.393
192	5.3	103,273	0.003	0.002	0.002	-
193	6.3	103,529	0.016	0.018	0.017	-
194	6.4	103,529	0.090	0.119	0.104	-
195	6.2	103,186	0.008	0.006	0.007	0.004
196	6.2	103,186	0.037	0.054	0.045	-
197	6.5	103,186	0.002	0.002	0.002	-
198	5.6	100,575	0.024	0.013	0.019	0.005
199	6.3	101,472	0.001	0.003	0.002	0.019
200	5.7	100,237	0.032	0.031	0.032	0.002
201	6.4	100,787	0.004	0.009	0.007	0.013
202	5.8	99,563	0.208	0.275	0.241	0.013
204	6.2	99,416	0.011	0.010	0.011	0.004
205	6.6	99,073	0.008	0.005	0.006	0.015
206	5.3	97,877	0.006	0.004	0.005	-
207	6.3	98,730	0.013	0.009	0.011	-
208	6.0	97,539	0.003	0.007	0.005	0.002
209	6.1	98,387	0.022	0.021	0.022	0.004
210	6.2	98,387	0.111	0.158	0.135	0.047
211	6.4	98,387	0.016	0.013	0.014	0.035
212	5.3	97,202	0.003	0.002	0.003	-

Spot #	pI	MW	K12 MG1655 <i>E. coli</i> LF 762 #12 silver gel Spot %	K12 MG1655 <i>E. coli</i> LF 762 #13 silver gel Spot %	Average K12 MG1655 <i>E. coli</i> silver gels Spot %	Cygnus Goat anti- <i>E. coli</i> wb of K12 MG1655 LF 762 #8 Spot %
213	5.5	97,202	0.002	0.030	0.016	0.022
214	6.5	97,702	0.078	0.085	0.082	0.088
215	6.1	96,330	0.039	0.052	0.046	0.008
216	6.6	96,330	0.007	0.006	0.007	0.003
217	6.7	96,330	0.054	0.040	0.047	0.043
218	5.5	94,167	0.005	0.006	0.005	0.005
219	5.9	93,830	0.008	0.011	0.009	0.007
220	6.3	93,588	0.003	0.002	0.003	-
221	5.8	92,481	0.026	0.021	0.023	0.015
222	5.8	92,481	0.098	0.141	0.119	0.076
223	6.9	93,245	0.035	0.027	0.031	0.007
224	6.0	92,144	0.014	0.010	0.012	0.003
225	6.0	92,559	0.042	0.046	0.044	0.015
226	6.7	92,559	0.006	0.005	0.005	0.002
227	4.9	77,536	0.064	0.053	0.058	0.018
228	5.4	90,457	0.007	0.005	0.006	-
229	5.5	90,457	0.004	0.005	0.004	0.014
230	6.1	89,474	0.017	0.016	0.016	0.024
231	6.3	88,446	0.000	0.000	0.000	0.292
232	6.2	88,103	0.072	0.079	0.076	0.009
233	6.0	98,473	0.005	0.018	0.011	0.006
234	6.2	87,760	0.009	0.005	0.007	-
235	6.8	87,760	0.008	0.008	0.008	0.005
236	5.3	85,736	0.022	0.022	0.022	0.010
237	5.9	85,736	0.006	0.006	0.006	0.003
238	5.7	85,399	0.000	0.000	0.000	0.026
239	5.4	85,061	0.020	0.020	0.020	0.005
240	5.9	85,061	0.133	0.102	0.117	0.027
241	5.4	84,724	0.151	0.255	0.203	0.039
242	5.6	84,724	0.046	0.045	0.045	0.024
243	5.8	84,724	0.027	0.052	0.039	0.011
244	6.6	85,018	0.051	0.026	0.038	-
245	6.9	85,018	0.043	0.032	0.037	0.017
246	5.6	84,050	0.026	0.017	0.022	0.062
247	6.7	83,989	0.052	0.020	0.036	0.008
248	7.0	82,188	0.051	0.034	0.043	0.010
249	6.2	82,275	0.012	0.010	0.011	-
250	5.8	81,014	0.003	0.003	0.003	0.004
251	6.5	80,904	0.003	0.004	0.003	0.001
252	6.5	80,218	0.017	0.014	0.015	0.001
253	6.4	79,876	0.020	0.013	0.016	-
254	nd	nd	0.006	0.006	0.006	0.165
255	6.0	78,654	0.021	0.022	0.022	0.005

Spot #	pI	MW	K12 MG1655 <i>E. coli</i> LF 762 #12 silver gel Spot %	K12 MG1655 <i>E. coli</i> LF 762 #13 silver gel Spot %	Average K12 MG1655 <i>E. coli</i> silver gels Spot %	Cygnus Goat anti- <i>E. coli</i> wb of K12 MG1655 LF 762 #8 Spot %
256	6.1	78,847	0.035	0.029	0.032	0.021
257	6.1	78,161	0.047	0.060	0.053	0.004
258	4.9	71,958	0.008	0.008	0.008	0.007
259	5.8	76,293	0.007	0.007	0.007	0.001
260	6.2	76,790	0.126	0.125	0.126	0.058
261	6.3	76,790	0.008	0.011	0.010	0.006
262	6.6	76,790	0.046	0.041	0.044	0.004
265	6.3	76,447	0.015	0.011	0.013	0.002
267	6.5	75,762	0.008	0.006	0.007	0.008
268	6.1	75,076	0.029	0.033	0.031	0.010
269	6.7	74,733	0.135	0.105	0.120	0.010
270	6.4	74,391	0.067	0.063	0.065	0.023
271	nd	nd	0.010	0.008	0.009	0.094
272	6.0	72,920	0.012	0.018	0.015	0.002
273	7.3	68,588	0.036	0.032	0.034	0.008
274	6.3	73,019	0.008	0.007	0.008	0.006
275	5.7	72,246	0.031	0.025	0.028	0.019
276	5.4	71,909	0.176	0.159	0.167	0.098
277	6.5	72,334	0.019	0.018	0.019	0.003
278	5.6	71,234	0.021	0.013	0.017	0.006
279	5.8	71,234	0.009	0.003	0.006	0.005
280	5.6	70,897	0.016	0.015	0.015	0.014
281	6.1	71,305	0.009	0.011	0.010	-
282	6.5	71,305	0.008	0.007	0.008	-
283	6.4	70,962	0.007	0.007	0.007	-
284	6.8	70,962	0.015	0.013	0.014	0.004
285	6.2	70,620	0.016	0.011	0.013	-
286	6.8	70,620	0.019	0.021	0.020	0.004
287	6.2	70,277	0.123	0.126	0.125	0.013
288	6.7	70,277	0.012	0.012	0.012	-
289	5.5	68,873	0.857	0.927	0.892	0.320
290	6.3	69,248	0.000	0.000	0.000	0.061
291	6.0	68,199	0.067	0.070	0.069	0.011
292	5.9	67,187	0.037	0.030	0.034	0.009
293	6.0	67,192	0.297	0.306	0.301	0.025
294	6.1	67,192	0.055	0.050	0.053	0.008
295	6.7	66,849	0.012	0.013	0.012	0.016
296	6.6	66,506	0.011	0.018	0.015	0.078
298	6.8	65,820	0.031	0.022	0.026	-
299	nd	nd	0.011	0.007	0.009	0.024
300	6.5	64,792	0.078	0.065	0.072	0.126
301	nd	nd	0.004	0.003	0.004	0.017
302	5.6	63,815	0.005	0.007	0.006	0.008



Spot #	pI	MW	K12 MG1655 <i>E. coli</i> LF 762 #12 silver gel Spot %	K12 MG1655 <i>E. coli</i> LF 762 #13 silver gel Spot %	Average K12 MG1655 <i>E. coli</i> silver gels Spot %	Cygnus Goat anti- <i>E. coli</i> wb of K12 MG1655 LF 762 #8 Spot %
303	5.9	63,815	0.006	0.001	0.004	0.004
304	6.3	64,106	0.016	0.015	0.016	-
305	6.3	64,106	0.017	0.010	0.014	0.013
306	6.8	63,764	0.016	0.010	0.013	-
307	7.2	64,492	0.142	0.104	0.123	0.021
308	6.0	62,129	0.011	0.015	0.013	0.010
309	6.5	62,392	0.103	0.108	0.106	0.068
310	6.4	61,707	0.001	0.007	0.004	-
311	6.6	61,707	0.021	0.029	0.025	0.029
312	5.3	61,117	0.007	0.006	0.006	0.002
313	5.7	60,442	0.008	0.007	0.007	0.001
314	6.0	60,678	0.001	0.015	0.008	0.008
315	6.1	60,678	0.017	0.010	0.013	-
316	5.6	60,105	0.005	0.006	0.006	0.002
317	6.7	60,335	0.278	0.275	0.276	0.152
318	5.9	59,431	0.025	0.025	0.025	-
319	6.8	59,307	0.032	0.018	0.025	0.050
320	5.8	58,756	0.010	0.008	0.009	0.005
321	6.2	58,964	0.012	0.012	0.012	-
322	5.5	58,419	0.013	0.027	0.020	0.037
323	5.9	58,419	0.013	0.009	0.011	0.009
324	6.3	58,621	0.017	0.012	0.014	0.040
325	6.7	58,621	0.009	0.004	0.007	-
326	nd	nd	0.000	0.000	0.000	0.020
327	5.9	58,082	0.050	0.052	0.051	0.017
328	5.6	57,744	0.007	0.007	0.007	0.004
329	6.5	57,250	0.000	0.000	0.000	0.017
330	5.7	55,721	0.012	0.013	0.012	0.002
331	6.1	55,879	0.003	0.002	0.003	0.003
332	5.7	55,384	0.012	0.010	0.011	-
333	6.0	55,536	0.049	0.051	0.050	0.010
334	6.0	55,046	0.021	0.019	0.020	0.006
335	6.7	55,193	0.004	0.005	0.004	-
336	6.2	54,850	0.032	0.040	0.036	-
337	6.4	54,850	0.061	0.047	0.054	0.004
338	nd	nd	0.005	0.004	0.005	0.038
339	5.3	54,372	0.003	0.003	0.003	-
340	5.9	54,372	0.003	0.002	0.002	0.006
341	6.8	54,165	0.043	0.025	0.034	0.027
342	nd	nd	0.000	0.000	0.000	0.041
343	5.8	53,697	0.028	0.038	0.033	0.005
344	5.5	52,686	0.188	0.233	0.211	0.019
345	6.1	52,794	0.005	0.006	0.006	0.001

Spot #	pI	MW	K12 MG1655 <i>E. coli</i> LF 762 #12 silver gel Spot %	K12 MG1655 <i>E. coli</i> LF 762 #13 silver gel Spot %	Average K12 MG1655 <i>E. coli</i> silver gels Spot %	Cygnus Goat anti- <i>E. coli</i> wb of K12 MG1655 LF 762 #8 Spot %
346	6.1	60,061	0.011	0.006	0.008	-
347	6.3	95,503	0.019	0.012	0.015	0.130
348	6.7	95,503	0.007	0.005	0.006	0.005
349	nd	nd	0.000	0.000	0.000	0.021
350	5.9	74,716	0.002	0.006	0.004	0.001
351	6.2	95,303	0.083	0.068	0.076	0.002
352	6.9	94,902	0.110	0.090	0.100	0.037
353	5.7	59,589	0.060	0.059	0.059	-
354	5.6	59,487	0.013	0.012	0.012	0.009
355	6.4	58,054	0.027	0.027	0.027	0.003
356	6.2	57,991	0.143	0.144	0.143	0.008
357	6.6	57,991	0.118	0.119	0.118	0.002
358	6.4	57,929	0.054	0.044	0.049	0.002
359	5.3	59,183	0.006	0.006	0.006	0.005
360	5.7	59,082	0.309	0.377	0.343	0.025
361	6.7	57,741	0.006	0.004	0.005	-
362	5.8	58,879	0.052	0.052	0.052	0.008
363	6.8	57,679	0.019	0.012	0.016	-
364	5.5	58,777	0.027	0.020	0.023	0.026
365	5.9	58,777	0.135	0.134	0.134	0.005
366	5.4	58,473	0.024	0.048	0.036	0.004
367	6.0	57,428	0.024	0.020	0.022	0.011
368	6.0	58,270	0.107	0.125	0.116	0.006
369	6.3	57,303	0.004	0.003	0.003	-
370	5.9	58,067	0.016	0.012	0.014	0.003
371	6.1	57,178	0.031	0.021	0.026	0.002
372	6.3	57,178	0.009	0.008	0.009	-
373	6.4	57,178	0.052	0.065	0.059	0.009
374	5.3	57,864	0.002	0.004	0.003	0.002
375	6.5	57,053	0.139	0.144	0.141	0.014
376	6.7	57,053	0.006	0.005	0.005	0.003
377	5.7	57,763	0.038	0.034	0.036	0.012
378	5.6	57,662	0.057	0.054	0.055	0.006
379	6.2	56,928	0.025	0.014	0.019	-
380	6.7	56,928	0.020	0.017	0.018	0.002
381	6.8	56,928	0.009	0.013	0.011	0.004
382	5.5	57,560	0.008	0.006	0.007	-
383	6.9	56,803	0.024	0.014	0.019	0.007
384	6.6	56,740	0.316	0.359	0.338	0.042
385	6.8	56,740	0.026	0.012	0.019	0.006
386	6.4	56,678	0.006	0.003	0.005	-
387	nd	nd	0.012	0.011	0.011	0.037
388	6.3	56,303	0.028	0.023	0.026	0.006

Spot #	pI	MW	K12 MG1655 <i>E. coli</i> LF 762 #12 silver gel Spot %	K12 MG1655 <i>E. coli</i> LF 762 #13 silver gel Spot %	Average K12 MG1655 <i>E. coli</i> silver gels Spot %	Cygnus Goat anti- <i>E. coli</i> wb of K12 MG1655 LF 762 #8 Spot %
389	7.9	55,950	0.733	0.507	0.620	-
390	6.1	56,052	0.018	0.020	0.019	0.071
391	7.5	55,826	0.012	0.013	0.013	0.001
392	5.4	56,140	0.052	0.056	0.054	0.015
393	6.4	55,990	0.016	0.014	0.015	0.012
394	6.5	55,927	0.308	0.319	0.313	0.076
395	6.7	55,927	0.006	0.008	0.007	-
396	6.8	55,865	0.030	0.021	0.025	-
397	6.6	55,740	0.009	0.008	0.009	-
398	6.1	55,615	0.045	0.042	0.044	-
399	6.7	55,615	0.005	0.003	0.004	-
400	5.2	57,229	0.013	0.013	0.013	-
401	6.3	55,490	0.008	0.003	0.005	0.003
402	6.2	55,427	0.365	0.390	0.377	0.033
403	6.2	55,427	0.231	0.217	0.224	0.006
404	5.3	55,025	0.004	0.004	0.004	0.001
405	5.7	54,923	0.027	0.022	0.024	0.013
406	6.5	55,239	0.006	0.003	0.005	-
407	6.4	55,177	0.036	0.024	0.030	-
408	nd	nd	0.049	0.039	0.044	0.373
409	6.4	55,114	0.010	0.004	0.007	-
410	6.8	55,114	0.013	0.010	0.011	-
411	5.8	54,619	0.056	0.039	0.047	0.065
412	5.9	54,619	0.205	0.152	0.179	0.065
413	5.5	54,315	0.017	0.016	0.016	0.021
414	6.9	54,864	0.015	0.013	0.014	-
415	6.0	54,213	0.572	0.577	0.575	0.022
416	6.1	54,802	0.024	0.014	0.019	-
417	nd	nd	0.000	0.000	0.000	0.004
418	4.8	60,534	0.004	0.003	0.003	0.147
419	6.0	54,676	0.650	0.710	0.680	0.096
420	nd	nd	0.000	0.000	0.000	0.007
421	6.8	54,489	0.020	0.010	0.015	-
422	5.4	53,605	0.023	0.017	0.020	0.004
423	5.6	53,503	0.004	0.005	0.004	0.002
424	6.4	54,364	0.014	0.022	0.018	0.002
425	6.4	54,301	0.015	0.011	0.013	0.006
426	7.5	54,090	0.076	0.070	0.073	0.300
427	6.2	53,989	0.010	0.022	0.016	0.006
428	5.7	52,692	0.033	0.015	0.024	0.002
429	5.7	52,692	0.020	0.010	0.015	-
430	5.4	52,590	0.003	0.002	0.002	0.001
431	5.9	52,489	0.009	0.021	0.015	0.026



Spot #	pI	MW	K12 MG1655 <i>E. coli</i> LF 762 #12 silver gel Spot %	K12 MG1655 <i>E. coli</i> LF 762 #13 silver gel Spot %	Average K12 MG1655 <i>E. coli</i> silver gels Spot %	Cygnus Goat anti- <i>E. coli</i> wb of K12 MG1655 LF 762 #8 Spot %
432	6.1	53,676	0.013	0.012	0.013	0.006
433	6.4	53,613	0.015	0.012	0.014	-
434	6.7	53,613	0.046	0.020	0.033	0.012
435	nd	nd	0.000	0.000	0.000	0.011
436	6.2	53,551	0.035	0.024	0.030	0.016
437	6.3	53,551	0.015	0.011	0.013	0.011
438	nd	nd	0.000	0.000	0.000	0.005
439	7.1	53,160	0.049	0.032	0.040	-
440	5.5	51,576	0.156	0.161	0.159	0.028
441	5.6	51,576	0.007	0.006	0.007	0.002
442	6.0	51,576	0.091	0.178	0.134	0.004
443	6.8	53,175	0.019	0.011	0.015	0.004
444	6.9	53,175	0.016	0.016	0.016	-
445	5.4	51,475	0.005	0.004	0.004	0.001
446	6.0	53,113	0.083	0.135	0.109	0.033
447	6.4	53,113	0.024	0.022	0.023	0.001
448	7.5	52,851	0.177	0.129	0.153	0.008
449	5.6	51,170	0.013	0.009	0.011	0.001
450	5.7	51,170	0.070	0.064	0.067	0.007
451	5.8	51,170	0.041	0.035	0.038	0.002
452	5.9	51,069	0.017	0.020	0.018	0.020
453	5.4	50,968	0.010	0.012	0.011	0.009
454	6.1	52,738	0.003	0.005	0.004	-
455	6.2	52,738	0.017	0.029	0.023	-
456	6.5	52,738	0.017	0.012	0.015	0.002
457	7.3	52,479	0.010	0.022	0.016	-
458	6.2	52,487	0.005	0.005	0.005	-
459	6.4	52,487	0.038	0.022	0.030	0.001
460	6.5	52,487	0.419	0.344	0.381	0.021
461	6.4	52,425	0.021	0.019	0.020	0.010
462	6.6	52,362	0.071	0.061	0.066	0.007
463	5.3	50,156	0.016	0.011	0.013	0.005
464	7.0	52,045	0.013	0.007	0.010	-
465	5.4	49,953	0.001	0.005	0.003	-
466	5.6	49,953	0.009	0.007	0.008	0.004
467	6.0	49,953	0.019	0.065	0.042	0.002
468	6.8	52,175	0.118	0.071	0.094	0.003
469	5.7	49,852	0.041	0.034	0.038	-
470	5.9	49,852	0.016	0.013	0.014	-
471	6.0	52,112	0.023	0.052	0.038	-
472	7.2	51,921	0.073	0.056	0.065	0.008
473	4.8	50,334	0.006	0.003	0.004	-
474	6.8	52,050	0.008	0.003	0.005	-

Spot #	pI	MW	K12 MG1655 <i>E. coli</i> LF 762 #12 silver gel Spot %	K12 MG1655 <i>E. coli</i> LF 762 #13 silver gel Spot %	Average K12 MG1655 <i>E. coli</i> silver gels Spot %	Cygnus Goat anti- <i>E. coli</i> wb of K12 MG1655 LF 762 #8 Spot %
475	6.9	52,050	0.017	0.012	0.015	0.023
476	5.8	49,548	0.190	0.211	0.200	-
477	6.7	51,737	1.168	1.154	1.161	0.065
478	6.3	51,674	0.021	0.014	0.018	-
479	5.2	49,040	0.004	0.002	0.003	0.002
480	5.7	48,939	0.043	0.030	0.036	0.002
481	6.0	48,939	0.016	0.013	0.014	0.002
482	5.9	48,838	0.031	0.027	0.029	0.006
483	6.5	51,487	0.022	0.025	0.023	0.007
484	5.3	48,736	0.019	0.025	0.022	0.009
485	5.7	48,736	0.013	0.011	0.012	0.001
486	6.6	51,424	0.016	0.014	0.015	-
487	5.5	48,635	0.035	0.033	0.034	0.020
488	6.0	51,299	0.021	0.017	0.019	0.003
489	5.4	48,432	0.005	0.004	0.005	0.001
490	5.8	48,432	0.079	0.054	0.067	0.007
491	7.3	50,991	0.092	0.074	0.083	0.008
492	6.4	51,049	0.008	0.006	0.007	0.009
493	5.8	48,026	0.638	0.623	0.631	0.016
494	6.9	50,986	0.177	0.136	0.157	0.005
495	6.8	50,861	0.027	0.022	0.025	0.004
496	5.9	47,722	0.101	0.118	0.110	0.010
497	6.4	50,799	0.018	0.002	0.010	-
498	6.1	50,736	0.620	0.640	0.630	0.099
499	6.2	50,736	0.088	0.083	0.085	0.047
500	7.0	50,557	0.340	0.144	0.242	0.100
501	7.2	50,557	0.056	0.033	0.044	0.004
502	5.9	47,519	0.012	0.007	0.009	0.029
503	6.0	50,674	0.047	0.064	0.056	0.005
504	6.5	50,674	0.019	0.011	0.015	0.016
505	6.9	50,611	0.052	0.043	0.047	0.066
506	5.7	47,113	0.011	0.003	0.007	0.004
507	6.3	50,424	0.014	0.008	0.011	-
508	6.3	50,424	0.014	0.011	0.012	-
509	5.7	47,012	0.019	0.014	0.017	0.005
510	6.6	50,361	0.042	0.039	0.041	0.039
511	6.6	50,298	0.021	0.007	0.014	0.001
512	5.5	46,809	0.008	0.003	0.006	0.001
513	5.6	46,708	0.004	0.005	0.005	0.004
514	5.8	46,708	0.095	0.107	0.101	0.028
515	5.9	46,505	0.058	0.046	0.052	0.007
516	6.0	50,048	0.050	0.038	0.044	0.004
517	5.0	46,270	0.008	0.004	0.006	-

Spot #	pI	MW	K12 MG1655 <i>E. coli</i> LF 762 #12 silver gel Spot %	K12 MG1655 <i>E. coli</i> LF 762 #13 silver gel Spot %	Average K12 MG1655 <i>E. coli</i> silver gels Spot %	Cygnus Goat anti- <i>E. coli</i> wb of K12 MG1655 LF 762 #8 Spot %
518	5.8	46,302	0.012	0.009	0.010	-
519	6.7	49,923	0.039	0.021	0.030	-
520	6.2	49,861	0.002	0.002	0.002	0.010
521	6.4	49,861	0.014	0.007	0.011	-
522	6.5	49,861	0.018	0.014	0.016	-
523	5.2	45,901	0.060	0.049	0.055	-
524	5.4	45,998	0.007	0.004	0.006	-
525	6.6	49,673	0.047	0.028	0.038	0.006
526	7.4	49,503	0.088	0.095	0.092	0.065
527	6.5	49,610	0.090	0.075	0.082	-
528	5.5	45,592	0.012	0.005	0.008	0.005
529	6.9	49,423	0.003	0.010	0.006	-
530	5.6	45,389	0.063	0.048	0.056	0.022
531	5.8	45,389	0.028	0.032	0.030	-
532	5.9	45,389	0.020	0.031	0.026	-
533	5.9	45,389	0.010	0.028	0.019	0.007
534	nd	nd	0.025	0.023	0.024	-
535	6.0	45,288	0.047	0.084	0.066	0.005
536	7.2	49,131	0.009	0.020	0.014	0.007
537	6.2	49,110	0.229	0.176	0.202	-
538	7.0	48,945	0.010	0.011	0.010	0.002
539	6.5	49,048	0.056	0.013	0.034	0.013
540	6.5	49,048	0.019	0.004	0.012	-
541	5.5	44,781	0.008	0.004	0.006	-
542	5.8	44,679	0.007	0.021	0.014	0.010
543	6.7	48,923	0.030	0.014	0.022	0.015
544	5.7	44,476	0.104	0.079	0.091	-
545	6.8	48,797	0.282	0.241	0.262	0.133
546	7.5	48,573	0.013	0.009	0.011	0.082
547	5.6	44,172	0.108	0.077	0.093	-
548	6.3	48,610	0.016	0.012	0.014	0.031
549	6.5	48,610	0.002	0.002	0.002	-
550	5.6	43,969	0.008	0.003	0.006	-
551	6.1	48,485	1.028	1.140	1.084	0.006
552	6.9	48,485	0.073	0.040	0.057	0.007
553	5.8	43,766	0.013	0.017	0.015	0.003
554	6.4	48,360	0.003	0.008	0.005	-
555	6.6	48,360	0.066	0.046	0.056	0.009
556	7.2	48,139	0.568	0.141	0.354	0.091
557	6.0	43,563	0.019	0.011	0.015	0.055
558	6.2	48,172	0.022	0.019	0.020	0.003
559	5.9	43,361	0.007	0.006	0.007	-
560	6.4	48,109	0.093	0.073	0.083	0.015



Spot #	pI	MW	K12 MG1655 <i>E. coli</i> LF 762 #12 silver gel Spot %	K12 MG1655 <i>E. coli</i> LF 762 #13 silver gel Spot %	Average K12 MG1655 <i>E. coli</i> silver gels Spot %	Cygnus Goat anti- <i>E. coli</i> wb of K12 MG1655 LF 762 #8 Spot %
561	5.5	43,259	0.004	0.006	0.005	-
562	6.5	48,047	0.010	0.009	0.009	0.010
563	5.8	43,056	0.041	0.033	0.037	0.011
564	5.7	46,022	0.030	0.021	0.025	-
565	6.5	47,179	0.028	0.025	0.026	-
566	7.6	47,194	0.056	0.044	0.050	0.003
567	7.5	47,019	0.200	0.176	0.188	0.018
568	6.6	46,888	0.145	0.111	0.128	0.035
569	6.8	46,888	0.099	0.080	0.090	0.008
570	5.7	42,679	0.006	0.004	0.005	0.020
571	6.2	46,830	0.080	0.059	0.069	0.009
572	5.5	42,593	0.009	0.008	0.009	-
573	6.3	46,714	0.004	0.002	0.003	0.001
574	6.4	46,714	0.008	0.007	0.008	-
575	6.5	46,481	0.060	0.037	0.048	0.017
576	5.2	42,336	0.004	0.004	0.004	-
577	6.7	46,307	0.031	0.020	0.026	0.004
578	5.8	42,250	0.013	0.008	0.011	0.016
579	6.1	46,249	0.041	0.034	0.037	0.006
580	6.9	46,249	0.096	0.102	0.099	0.135
581	5.3	42,208	0.042	0.033	0.037	-
582	7.2	46,204	0.012	0.031	0.021	0.017
583	6.0	42,165	0.053	0.045	0.049	0.014
584	8.1	46,146	0.000	0.000	0.000	0.261
585	nd	nd	0.004	0.004	0.004	-
586	5.6	42,036	0.055	0.045	0.050	-
587	6.2	45,959	0.013	0.015	0.014	0.005
588	6.1	45,842	0.141	0.136	0.138	0.016
589	6.3	45,842	0.089	0.070	0.080	0.043
590	6.6	45,842	0.012	0.015	0.013	-
591	5.9	41,908	0.085	0.063	0.074	0.045
592	6.4	45,784	0.030	0.026	0.028	0.011
593	7.5	45,738	0.033	0.057	0.045	0.072
594	5.7	41,822	0.033	0.027	0.030	0.018
595	6.5	45,552	0.007	0.005	0.006	-
596	5.0	41,715	0.007	0.005	0.006	-
597	5.7	41,651	0.096	0.056	0.076	0.027
598	5.8	41,608	0.645	0.604	0.624	0.120
599	6.5	45,378	0.078	0.051	0.064	0.039
600	6.2	45,319	0.041	0.027	0.034	0.006
601	6.8	45,319	0.009	0.013	0.011	0.002
602	5.2	45,281	0.036	0.035	0.035	0.006
603	5.3	41,523	0.033	0.022	0.027	0.001

Spot #	pI	MW	K12 MG1655 <i>E. coli</i> LF 762 #12 silver gel Spot %	K12 MG1655 <i>E. coli</i> LF 762 #13 silver gel Spot %	Average K12 MG1655 <i>E. coli</i> silver gels Spot %	Cygnus Goat anti- <i>E. coli</i> wb of K12 MG1655 LF 762 #8 Spot %
604	7.1	45,214	0.043	0.035	0.039	0.012
605	6.9	45,145	0.040	0.024	0.032	-
606	6.1	45,087	0.010	0.013	0.011	0.025
607	6.0	41,351	0.056	0.061	0.059	0.016
608	6.7	45,029	0.009	0.006	0.008	-
609	6.4	44,913	0.015	0.014	0.015	-
610	6.2	44,855	0.017	0.010	0.013	-
611	6.3	44,796	0.007	0.015	0.011	0.016
612	5.4	41,095	0.019	0.022	0.021	0.001
613	6.6	44,680	0.025	0.019	0.022	0.039
614	6.6	44,622	0.070	0.059	0.065	-
615	6.8	44,622	0.014	0.009	0.012	0.003
616	5.8	40,966	0.019	0.017	0.018	0.007
617	5.5	40,923	0.010	0.008	0.009	-
618	6.5	44,390	0.004	0.001	0.003	0.011
619	6.0	40,752	0.039	0.043	0.041	0.003
620	6.1	44,099	0.011	0.013	0.012	-
621	7.3	44,108	0.017	0.014	0.015	0.011
622	7.5	44,108	0.073	0.111	0.092	0.004
623	5.9	40,624	0.504	0.470	0.487	0.005
624	5.3	40,581	0.010	0.008	0.009	-
625	6.4	43,867	0.021	0.018	0.020	-
626	5.6	40,452	0.022	0.015	0.018	0.002
627	5.8	40,452	0.120	0.081	0.100	0.013
628	5.4	40,410	0.042	0.036	0.039	0.002
629	5.7	40,410	0.141	0.127	0.134	0.004
630	5.8	40,410	0.034	0.024	0.029	0.021
631	6.3	43,693	0.015	0.010	0.012	0.017
632	6.9	43,693	0.022	0.011	0.016	-
633	6.6	43,634	0.016	0.014	0.015	0.001
634	6.8	43,634	0.015	0.008	0.012	0.001
635	6.9	43,576	0.016	0.008	0.012	-
636	6.2	43,518	0.092	0.079	0.085	0.027
637	6.5	43,518	0.106	0.076	0.091	0.011
638	7.1	43,526	0.144	0.158	0.151	0.011
639	nd	nd	0.026	0.021	0.023	0.001
640	6.4	43,402	0.010	0.009	0.009	-
641	7.2	43,234	0.031	0.026	0.029	-
642	6.3	43,170	0.020	0.015	0.018	0.014
643	7.4	43,176	0.055	0.055	0.055	-
644	5.0	39,960	0.006	0.006	0.006	0.003
645	6.1	43,112	0.057	0.055	0.056	0.033
646	6.7	43,112	0.015	0.012	0.013	-

Spot #	pI	MW	K12 MG1655 <i>E. coli</i> LF 762 #12 silver gel Spot %	K12 MG1655 <i>E. coli</i> LF 762 #13 silver gel Spot %	Average K12 MG1655 <i>E. coli</i> silver gels Spot %	Cygnus Goat anti- <i>E. coli</i> wb of K12 MG1655 LF 762 #8 Spot %
647	5.3	39,853	0.005	0.003	0.004	-
648	6.6	42,995	0.064	0.062	0.063	-
649	5.5	39,810	0.027	0.027	0.027	0.003
650	7.3	42,943	0.022	0.026	0.024	-
651	6.0	39,767	0.032	0.024	0.028	-
652	5.7	39,725	0.008	0.007	0.008	-
653	5.8	39,725	0.043	0.040	0.041	-
654	5.9	39,682	0.367	0.343	0.355	0.065
655	5.8	39,596	0.152	0.117	0.134	0.015
656	6.8	42,647	0.050	0.037	0.044	0.003
657	5.3	39,553	0.028	0.025	0.026	-
658	5.7	39,511	0.011	0.007	0.009	0.004
659	6.4	42,531	0.019	0.011	0.015	-
660	nd	nd	0.005	0.007	0.006	0.010
661	6.1	42,182	0.012	0.018	0.015	0.002
662	6.5	42,182	0.005	0.006	0.005	0.010
663	6.6	42,008	0.088	0.074	0.081	-
664	7.0	42,008	0.006	0.011	0.008	-
665	5.7	39,082	0.012	0.013	0.013	-
666	6.0	39,082	0.031	0.020	0.025	0.049
667	5.9	39,040	0.005	0.003	0.004	-
668	6.8	41,717	0.029	0.021	0.025	0.003
669	6.8	41,659	0.035	0.028	0.032	0.002
670	7.3	41,662	0.010	0.014	0.012	-
671	5.6	38,826	0.008	0.004	0.006	-
673	6.0	38,612	0.031	0.014	0.022	0.006
674	6.2	41,310	0.020	0.020	0.020	0.029
675	6.5	41,310	0.015	0.009	0.012	-
676	6.7	41,310	0.066	0.039	0.052	0.050
677	7.1	41,313	0.006	0.009	0.007	-
678	5.3	38,569	0.020	0.018	0.019	-
679	5.4	38,569	0.009	0.010	0.009	-
680	5.8	38,569	0.006	0.006	0.006	-
681	6.1	41,194	0.000	0.000	0.000	0.012
682	5.9	38,483	0.009	0.010	0.009	0.003
683	6.9	41,136	0.009	0.014	0.012	-
684	6.2	41,078	0.237	0.153	0.195	0.071
685	6.3	41,020	0.678	0.556	0.617	0.137
686	6.4	41,020	0.066	0.054	0.060	0.070
687	6.5	41,020	0.019	0.018	0.018	-
688	5.5	38,269	0.010	0.008	0.009	-
689	7.1	40,730	0.073	0.051	0.062	0.005
690	5.7	38,141	0.009	0.030	0.019	-



Spot #	pI	MW	K12 MG1655 <i>E. coli</i> LF 762 #12 silver gel Spot %	K12 MG1655 <i>E. coli</i> LF 762 #13 silver gel Spot %	Average K12 MG1655 <i>E. coli</i> silver gels Spot %	Cygnus Goat anti- <i>E. coli</i> wb of K12 MG1655 LF 762 #8 Spot %
691	6.5	40,555	0.021	0.016	0.019	0.005
692	5.8	38,012	0.004	0.016	0.010	-
694	6.1	40,265	0.043	0.036	0.039	0.006
695	5.1	37,819	0.005	0.002	0.004	0.005
696	5.8	37,798	0.012	0.021	0.016	0.006
697	4.9	37,691	0.004	0.002	0.003	0.003
698	6.4	40,032	0.012	0.006	0.009	-
699	6.0	37,627	0.087	0.073	0.080	0.002
700	6.8	39,916	0.005	0.005	0.005	0.001
701	6.9	39,916	0.006	0.005	0.005	-
702	6.7	39,858	0.072	0.034	0.053	-
703	5.9	37,456	0.020	0.017	0.018	-
704	nd	nd	0.011	0.012	0.011	-
705	6.3	39,625	0.022	0.020	0.021	-
706	5.6	37,327	0.027	0.022	0.025	-
707	7.4	39,566	0.072	0.072	0.072	-
708	nd	nd	0.014	0.010	0.012	0.005
709	5.0	37,306	0.015	0.013	0.014	0.005
710	5.8	37,242	0.004	0.007	0.006	0.005
711	6.4	39,451	0.098	0.071	0.085	0.020
712	7.2	39,449	0.037	0.032	0.034	-
713	6.6	39,393	0.017	0.012	0.015	0.003
714	7.7	39,333	0.092	0.079	0.085	-
715	5.1	37,134	0.004	0.003	0.003	0.013
716	5.4	37,113	0.007	0.006	0.006	-
717	7.0	39,277	0.006	0.013	0.010	0.003
718	6.3	39,044	0.001	0.008	0.004	0.027
719	6.8	38,928	0.023	0.019	0.021	0.001
721	6.5	38,812	0.200	0.143	0.172	0.007
722	5.5	36,728	0.006	0.007	0.007	0.001
723	6.9	38,638	0.157	0.131	0.144	0.038
724	nd	nd	0.038	0.044	0.041	0.033
725	5.9	36,599	0.105	0.083	0.094	0.001
726	6.6	38,580	0.015	0.011	0.013	-
727	6.1	38,521	0.010	0.011	0.011	0.004
728	6.8	38,463	0.028	0.017	0.023	0.002
729	6.3	38,405	0.022	0.016	0.019	0.065
730	7.1	38,285	0.397	0.316	0.357	0.128
731	6.7	38,231	0.515	0.413	0.464	0.018
732	7.3	38,226	0.049	0.056	0.053	-
733	4.9	36,235	0.001	0.005	0.003	-
734	nd	nd	0.000	0.000	0.000	0.008
735	5.4	36,171	0.025	0.025	0.025	0.001

Spot #	pI	MW	K12 MG1655 <i>E. coli</i> LF 762 #12 silver gel Spot %	K12 MG1655 <i>E. coli</i> LF 762 #13 silver gel Spot %	Average K12 MG1655 <i>E. coli</i> silver gels Spot %	Cygnus Goat anti- <i>E. coli</i> wb of K12 MG1655 LF 762 #8 Spot %
736	5.3	36,086	0.004	0.002	0.003	-
737	5.0	36,021	0.020	0.022	0.021	-
738	6.6	37,766	0.026	0.021	0.024	-
739	6.0	35,914	0.148	0.138	0.143	-
740	5.6	35,872	0.017	0.012	0.015	0.003
741	6.0	35,872	0.079	0.063	0.071	0.009
742	5.5	35,829	0.005	0.005	0.005	0.002
743	6.4	37,534	0.034	0.022	0.028	-
744	6.5	37,476	0.015	0.015	0.015	-
745	6.9	37,359	0.007	0.006	0.007	-
746	8.0	37,353	0.164	0.084	0.124	0.042
747	5.2	35,615	0.017	0.009	0.013	0.018
748	6.6	37,185	0.028	0.020	0.024	-
749	5.4	35,443	0.116	0.142	0.129	0.150
750	nd	nd	0.002	0.004	0.003	0.164
751	5.7	35,401	0.034	0.033	0.034	-
752	5.3	35,358	0.009	0.007	0.008	0.005
753	6.1	36,895	0.016	0.018	0.017	-
754	6.3	36,778	0.009	0.009	0.009	0.131
755	7.2	36,712	0.022	0.021	0.022	0.005
756	6.3	36,604	0.036	0.027	0.031	-
757	6.7	36,546	0.014	0.010	0.012	0.003
758	6.9	36,546	0.018	0.016	0.017	0.002
759	5.5	35,058	0.019	0.015	0.017	-
760	6.1	36,488	0.132	0.105	0.119	0.081
761	7.1	36,421	0.124	0.110	0.117	0.017
762	6.2	36,314	0.005	0.005	0.005	0.004
763	nd	nd	0.015	0.014	0.014	-
764	6.8	36,197	0.052	0.038	0.045	0.002
765	5.7	34,801	0.000	0.003	0.002	-
766	5.6	34,587	0.044	0.041	0.042	0.006
767	6.5	35,849	0.032	0.033	0.033	0.013
768	7.4	35,839	0.125	0.168	0.147	-
769	5.8	34,544	0.012	0.018	0.015	-
770	6.4	35,791	0.184	0.143	0.164	0.043
771	6.6	35,733	0.502	0.399	0.451	0.209
772	6.3	35,674	0.056	0.050	0.053	-
773	5.4	34,373	0.048	0.057	0.053	-
774	6.0	34,330	0.082	0.063	0.072	0.020
775	nd	nd	0.000	0.000	0.000	0.018
776	5.7	34,245	0.376	0.335	0.356	0.046
777	6.8	35,326	0.029	0.022	0.026	0.001
778	5.2	34,116	0.008	0.006	0.007	0.007

Spot #	pI	MW	K12 MG1655 <i>E. coli</i> LF 762 #12 silver gel Spot %	K12 MG1655 <i>E. coli</i> LF 762 #13 silver gel Spot %	Average K12 MG1655 <i>E. coli</i> silver gels Spot %	Cygnus Goat anti- <i>E. coli</i> wb of K12 MG1655 LF 762 #8 Spot %
779	6.0	34,073	0.007	0.007	0.007	-
780	7.1	35,140	0.016	0.011	0.014	-
781	5.8	34,031	0.038	0.031	0.034	0.125
782	5.3	33,945	0.062	0.046	0.054	0.024
783	6.6	34,919	0.016	0.012	0.014	-
784	5.1	33,752	0.023	0.023	0.023	0.004
785	5.7	33,688	0.000	0.000	0.000	0.016
786	6.2	34,629	0.053	0.045	0.049	0.012
787	6.8	34,629	0.062	0.044	0.053	0.004
788	6.1	34,571	0.020	0.015	0.017	-
789	5.5	33,603	0.038	0.033	0.036	0.003
790	6.8	34,512	0.039	0.031	0.035	0.005
791	8.0	34,500	0.000	0.000	0.000	0.415
792	7.5	34,441	1.108	0.931	1.020	0.040
793	5.6	33,517	0.143	0.141	0.142	0.002
794	6.9	34,396	0.057	0.057	0.057	0.005
795	5.4	33,474	0.009	0.010	0.010	-
796	6.3	34,338	0.034	0.030	0.032	0.013
797	7.7	34,325	0.034	0.040	0.037	0.126
798	7.3	34,209	0.093	0.112	0.103	-
799	nd	nd	0.007	0.006	0.006	-
800	6.1	33,990	0.109	0.083	0.096	0.113
801	7.2	33,976	0.528	0.447	0.488	0.044
802	5.8	33,174	0.006	0.006	0.006	0.004
803	6.0	33,174	0.021	0.014	0.017	0.234
804	6.7	33,873	0.017	0.021	0.019	0.118
805	6.5	33,815	0.063	0.063	0.063	0.038
806	6.3	33,699	0.118	0.066	0.092	0.004
807	5.7	32,960	0.048	0.060	0.054	0.004
808	5.9	32,960	0.018	0.014	0.016	-
809	6.1	33,641	0.004	0.010	0.007	0.048
810	6.6	33,583	0.030	0.024	0.027	0.178
811	6.4	33,467	0.808	0.697	0.753	0.062
812	4.9	32,725	0.073	0.083	0.078	0.009
813	6.3	33,234	0.150	0.100	0.125	0.003
814	6.8	33,234	0.017	0.012	0.015	0.053
815	5.3	32,618	0.010	0.006	0.008	-
816	5.8	32,618	0.021	0.016	0.018	0.006
817	6.5	33,002	0.026	0.019	0.023	0.026
818	7.4	32,986	0.000	0.000	0.000	0.713
819	5.8	32,447	0.008	0.002	0.005	0.029
820	6.9	32,944	0.007	0.006	0.007	0.290
821	8.1	32,869	1.109	0.826	0.968	0.098



Spot #	pI	MW	K12 MG1655 <i>E. coli</i> LF 762 #12 silver gel Spot %	K12 MG1655 <i>E. coli</i> LF 762 #13 silver gel Spot %	Average K12 MG1655 <i>E. coli</i> silver gels Spot %	Cygnus Goat anti- <i>E. coli</i> wb of K12 MG1655 LF 762 #8 Spot %
822	6.2	32,827	0.018	0.012	0.015	0.017
823	5.5	32,318	0.046	0.046	0.046	-
824	5.4	32,233	0.007	0.018	0.013	-
825	7.1	32,636	0.035	0.023	0.029	0.043
826	5.7	32,190	0.012	0.068	0.040	-
827	nd	nd	0.003	0.002	0.003	-
828	6.1	32,537	0.006	0.006	0.006	0.019
829	6.6	32,537	0.118	0.108	0.113	0.146
830	7.2	32,520	0.016	0.018	0.017	0.031
831	6.8	32,479	0.013	0.011	0.012	0.081
832	6.5	32,421	0.019	0.010	0.014	-
833	7.5	32,345	0.007	0.013	0.010	-
834	5.7	31,976	0.017	0.013	0.015	0.005
835	6.2	32,246	0.128	0.090	0.109	-
836	6.3	32,188	0.026	0.029	0.027	0.037
837	5.8	31,847	0.224	0.156	0.190	-
838	6.0	31,847	0.033	0.027	0.030	0.009
839	5.5	31,762	0.029	0.028	0.028	-
840	5.9	31,762	0.824	0.767	0.795	0.254
841	6.9	32,014	0.068	0.064	0.066	0.008
842	6.4	31,782	0.533	0.514	0.524	0.100
843	6.8	31,782	0.094	0.081	0.087	0.011
844	7.3	31,763	0.017	0.014	0.016	0.005
845	5.3	31,548	0.003	0.003	0.003	0.001
846	7.1	31,530	0.449	0.331	0.390	0.016
847	7.2	31,530	0.261	0.205	0.233	0.028
848	nd	nd	0.078	0.101	0.089	-
849	6.8	31,491	0.073	0.064	0.068	0.019
850	7.0	31,491	0.062	0.045	0.053	0.013
851	5.7	31,291	0.014	0.011	0.012	0.006
852	6.7	31,375	0.091	0.070	0.081	-
853	6.2	31,259	0.006	0.003	0.005	-
854	6.3	31,259	0.008	0.004	0.006	-
855	7.7	31,239	0.131	0.133	0.132	0.290
856	4.8	30,318	0.002	0.003	0.003	-
857	6.5	31,201	0.088	0.092	0.090	0.015
858	6.1	31,143	0.039	0.003	0.021	0.115
859	6.1	31,084	0.031	0.050	0.041	-
860	8.0	30,715	0.024	0.016	0.020	0.010
861	5.6	30,777	0.006	0.012	0.009	0.003
862	5.7	30,777	0.015	0.007	0.011	0.005
863	5.9	30,777	0.426	0.360	0.393	0.186
864	6.0	30,777	0.010	0.008	0.009	0.007

Spot #	pI	MW	K12 MG1655 <i>E. coli</i> LF 762 #12 silver gel Spot %	K12 MG1655 <i>E. coli</i> LF 762 #13 silver gel Spot %	Average K12 MG1655 <i>E. coli</i> silver gels Spot %	Cygnus Goat anti- <i>E. coli</i> wb of K12 MG1655 LF 762 #8 Spot %
865	6.2	30,678	0.018	0.014	0.016	-
866	6.6	30,678	0.019	0.017	0.018	0.002
867	7.0	30,678	0.045	0.026	0.035	-
868	6.3	30,620	0.078	0.072	0.075	-
869	6.4	30,620	0.016	0.014	0.015	0.011
870	6.5	30,271	0.009	0.007	0.008	-
871	6.6	30,155	0.029	0.024	0.027	0.006
872	6.7	30,155	0.080	0.060	0.070	0.007
873	6.9	30,097	0.109	0.101	0.105	0.009
874	6.1	29,980	0.004	0.006	0.005	-
875	nd	nd	0.003	0.011	0.007	-
876	6.2	29,922	0.004	0.004	0.004	-
877	5.7	30,135	0.053	0.048	0.051	0.005
878	5.9	30,006	0.008	0.014	0.011	0.006
879	7.0	29,632	0.015	0.009	0.012	-
880	4.8	29,985	0.014	0.015	0.015	-
881	5.7	29,964	0.005	0.045	0.025	-
882	7.2	29,550	0.189	0.162	0.176	-
883	6.5	29,458	0.027	0.026	0.026	0.023
884	6.3	29,399	0.091	0.078	0.085	0.021
885	6.4	29,283	0.092	0.076	0.084	0.093
886	6.1	29,167	0.016	0.016	0.016	0.020
887	6.4	29,167	0.021	0.041	0.031	-
888	6.6	29,167	0.056	0.025	0.040	-
889	6.7	29,109	0.088	0.084	0.086	0.005
890	6.8	29,109	0.684	0.592	0.638	0.007
891	6.1	28,993	0.009	0.007	0.008	-
892	6.9	28,993	0.024	0.023	0.023	0.001
893	7.4	28,968	0.046	0.051	0.049	0.020
894	5.2	29,493	0.000	0.000	0.000	0.001
895	7.3	28,793	0.020	0.067	0.043	0.027
896	5.5	29,364	0.040	0.026	0.033	0.009
897	6.9	28,760	0.038	0.041	0.040	0.002
898	5.7	29,236	0.020	0.035	0.027	0.003
899	7.3	28,560	0.017	0.022	0.020	-
900	5.4	29,193	0.051	0.051	0.051	0.005
901	5.9	29,193	0.012	0.005	0.008	-
902	5.7	29,150	0.006	0.020	0.013	-
903	6.0	29,150	0.058	0.056	0.057	-
904	6.1	28,354	0.027	0.034	0.031	0.015
905	6.5	28,354	0.006	0.011	0.008	0.015
906	7.5	34,292	0.011	0.020	0.015	-
907	7.6	34,292	0.020	0.029	0.024	0.020

Spot #	pI	MW	K12 MG1655 <i>E. coli</i> LF 762 #12 silver gel Spot %	K12 MG1655 <i>E. coli</i> LF 762 #13 silver gel Spot %	Average K12 MG1655 <i>E. coli</i> silver gels Spot %	Cygnus Goat anti- <i>E. coli</i> wb of K12 MG1655 LF 762 #8 Spot %
908	5.7	28,972	0.062	0.089	0.076	0.181
909	8.0	28,389	1.698	0.964	1.331	0.035
910	6.9	32,053	0.007	0.006	0.006	-
911	5.2	32,747	0.010	0.011	0.011	-
912	6.8	31,955	0.064	0.081	0.072	0.007
913	6.0	32,640	0.051	0.041	0.046	-
914	6.2	32,640	0.194	0.151	0.173	0.044
915	6.2	32,618	0.098	0.075	0.086	-
916	5.4	32,631	0.081	0.098	0.089	-
917	6.4	32,596	0.050	0.056	0.053	0.013
918	6.6	32,596	0.005	0.005	0.005	0.005
919	5.8	32,588	0.015	0.014	0.014	-
920	5.5	32,566	0.006	0.006	0.006	-
921	5.9	32,566	0.147	0.123	0.135	0.066
922	7.3	28,261	0.102	0.102	0.102	0.008
923	6.9	31,688	0.011	0.010	0.010	-
924	6.4	32,442	0.099	0.080	0.089	-
925	5.1	32,418	0.020	0.022	0.021	-
926	6.7	31,567	0.014	0.020	0.017	0.006
927	5.2	32,374	0.054	0.053	0.053	0.001
928	7.1	28,110	0.010	0.013	0.012	-
929	6.0	32,331	0.020	0.021	0.021	-
930	6.8	31,494	0.020	0.039	0.029	0.009
931	8.0	27,898	0.000	0.000	0.000	0.337
932	7.0	31,421	0.005	0.007	0.006	-
933	5.8	32,259	0.025	0.031	0.028	-
934	6.5	32,221	0.006	0.009	0.007	0.014
935	7.5	27,822	0.061	0.119	0.090	0.008
936	5.7	32,194	0.010	0.007	0.008	-
937	6.9	31,299	0.054	0.047	0.051	0.038
938	7.1	27,922	0.034	0.025	0.030	-
939	6.3	32,111	0.188	0.172	0.180	0.061
940	5.5	32,128	0.009	0.011	0.010	-
941	5.6	32,084	0.028	0.074	0.051	0.002
942	5.9	32,084	0.153	0.149	0.151	-
943	6.1	32,022	0.036	0.022	0.029	0.010
944	5.5	31,996	0.013	0.020	0.016	0.021
945	6.1	31,956	0.000	0.000	0.000	0.038
946	6.4	31,956	0.062	0.070	0.066	0.026
947	8.1	27,633	0.042	0.069	0.055	-
948	7.3	27,752	0.082	0.068	0.075	-
949	6.6	31,890	0.036	0.028	0.032	0.089
950	7.0	31,008	0.018	0.023	0.020	0.019

Spot #	pI	MW	K12 MG1655 <i>E. coli</i> LF 762 #12 silver gel Spot %	K12 MG1655 <i>E. coli</i> LF 762 #13 silver gel Spot %	Average K12 MG1655 <i>E. coli</i> silver gels Spot %	Cygnus Goat anti- <i>E. coli</i> wb of K12 MG1655 LF 762 #8 Spot %
951	5.2	31,846	0.007	0.012	0.010	0.025
952	nd	nd	0.002	0.006	0.004	-
953	nd	nd	0.009	0.009	0.009	-
954	6.0	31,799	0.021	0.029	0.025	-
955	6.5	31,736	0.043	0.042	0.043	0.008
956	6.8	30,838	0.310	0.260	0.285	0.039
957	6.3	31,669	0.030	0.031	0.030	0.013
958	6.5	31,669	0.004	0.009	0.006	-
959	6.1	31,647	0.015	0.015	0.015	0.004
960	5.4	31,668	0.066	0.095	0.081	0.145
961	6.9	30,740	0.010	0.012	0.011	0.012
962	7.5	27,330	0.053	0.080	0.067	-
963	5.5	31,624	0.002	0.002	0.002	0.040
964	5.7	31,624	0.038	0.051	0.045	0.037
965	8.1	27,274	0.513	0.408	0.460	3.097
966	7.4	27,394	0.035	0.041	0.038	-
967	5.6	31,537	0.009	0.015	0.012	0.034
968	5.5	31,471	0.051	0.065	0.058	0.015
969	6.8	30,522	0.047	0.046	0.047	0.002
970	7.0	35,360	0.018	0.030	0.024	0.020
971	5.9	31,449	0.003	0.008	0.006	0.050
972	6.0	31,404	0.099	0.084	0.091	0.013
973	6.2	31,404	0.005	0.003	0.004	-
974	6.4	31,404	0.021	0.013	0.017	0.014
975	6.1	31,382	0.015	0.021	0.018	0.015
976	7.6	27,141	0.004	0.008	0.006	-
977	5.9	31,405	0.007	0.011	0.009	-
978	6.5	31,338	0.086	0.058	0.072	0.045
979	6.3	31,316	0.123	0.121	0.122	0.013
980	6.7	31,272	0.658	0.595	0.627	0.081
981	5.2	31,274	0.010	0.018	0.014	-
982	6.8	30,230	0.155	0.159	0.157	0.005
983	6.5	31,140	0.009	0.011	0.010	0.007
984	5.8	31,164	0.191	0.213	0.202	0.201
985	5.4	31,142	0.015	0.020	0.018	-
986	5.6	31,077	0.016	0.015	0.015	0.022
987	7.0	26,979	0.216	0.293	0.255	1.004
988	7.4	26,839	0.011	0.016	0.013	-
989	6.6	31,007	0.092	0.073	0.082	-
990	5.5	30,967	0.028	0.036	0.032	-
991	5.7	30,945	0.029	0.038	0.033	-
992	5.6	30,923	0.006	0.009	0.008	-
993	6.4	30,875	0.082	0.087	0.085	0.003



Spot #	pI	MW	K12 MG1655 <i>E. coli</i> LF 762 #12 silver gel Spot %	K12 MG1655 <i>E. coli</i> LF 762 #13 silver gel Spot %	Average K12 MG1655 <i>E. coli</i> silver gels Spot %	Cygnus Goat anti- <i>E. coli</i> wb of K12 MG1655 LF 762 #8 Spot %
994	5.1	30,878	0.009	0.010	0.010	-
995	6.2	30,831	0.128	0.147	0.138	0.016
996	8.3	26,669	0.001	0.010	0.006	0.004
997	5.9	30,858	0.025	0.052	0.039	0.010
998	6.0	30,809	0.185	0.501	0.343	0.031
999	6.1	30,809	0.186	0.142	0.164	0.095
1000	6.6	30,809	0.040	0.039	0.039	0.056
1001	6.3	30,764	0.969	0.763	0.866	0.183
1002	5.9	30,792	0.111	0.149	0.130	0.223
1003	6.5	30,742	0.016	0.012	0.014	0.035
1004	5.8	30,748	0.024	0.030	0.027	0.020
1005	6.7	30,698	0.022	0.023	0.023	0.046
1006	5.2	30,658	0.221	0.216	0.218	0.004
1007	5.8	30,661	0.054	0.057	0.055	0.057
1008	7.7	26,442	0.026	0.033	0.029	-
1009	5.4	30,595	0.009	0.010	0.009	-
1010	7.5	26,423	0.016	0.024	0.020	0.002
1011	6.8	29,501	0.015	0.021	0.018	0.050
1012	6.5	30,478	0.011	0.015	0.013	0.020
1013	8.4	26,366	0.005	0.033	0.019	0.059
1014	7.2	26,489	0.060	0.078	0.069	0.091
1015	7.0	26,470	0.005	0.034	0.019	0.051
1016	8.0	26,328	0.420	0.390	0.405	0.368
1017	6.5	30,323	0.005	0.009	0.007	-
1018	5.7	30,354	0.026	0.021	0.023	0.018
1019	5.8	30,310	0.213	0.203	0.208	0.160
1020	6.4	30,257	0.097	0.111	0.104	0.011
1021	5.0	26,966	0.037	0.045	0.041	0.007
1022	6.2	30,213	0.024	0.030	0.027	0.003
1023	nd	nd	0.000	0.000	0.000	0.232
1024	6.7	30,169	0.039	0.041	0.040	-
1025	7.1	26,149	0.014	0.017	0.016	-
1026	5.8	30,091	0.004	0.017	0.011	-
1027	7.0	28,967	0.102	0.079	0.090	0.012
1028	6.1	29,992	0.183	0.154	0.168	0.004
1029	6.9	28,845	0.037	0.047	0.042	-
1030	7.2	25,998	0.016	0.022	0.019	-
1031	6.3	29,838	0.014	0.023	0.018	0.003
1032	6.5	29,838	0.020	0.017	0.018	-
1033	nd	nd	0.006	0.006	0.006	-
1034	5.9	29,872	0.116	0.116	0.116	-
1035	6.7	29,815	0.090	0.101	0.095	0.006
1036	5.7	29,850	0.162	0.160	0.161	0.006

Spot #	pI	MW	K12 MG1655 <i>E. coli</i> LF 762 #12 silver gel Spot %	K12 MG1655 <i>E. coli</i> LF 762 #13 silver gel Spot %	Average K12 MG1655 <i>E. coli</i> silver gels Spot %	Cygnus Goat anti- <i>E. coli</i> wb of K12 MG1655 LF 762 #8 Spot %
1037	5.6	29,829	0.007	0.008	0.007	0.006
1038	6.0	29,719	0.215	0.204	0.209	-
1039	6.7	29,639	0.005	0.010	0.007	0.009
1040	7.4	25,629	0.003	0.005	0.004	0.019
1041	5.5	29,631	0.004	0.009	0.006	0.005
1042	5.6	29,566	0.025	0.027	0.026	-
1043	7.3	25,678	0.052	0.062	0.057	0.038
1044	4.9	26,411	0.015	0.014	0.014	-
1045	5.9	29,544	0.082	0.077	0.079	-
1046	6.2	26,298	0.031	0.015	0.023	-
1047	6.3	29,374	0.007	0.010	0.008	0.030
1048	7.4	25,421	0.079	0.121	0.100	0.401
1049	5.8	29,412	0.009	0.038	0.024	-
1050	6.7	29,352	0.022	0.023	0.022	0.021
1051	8.3	25,364	0.742	0.723	0.732	4.220
1052	6.4	29,220	0.043	0.052	0.048	0.033
1053	6.0	26,171	0.037	0.068	0.052	0.034
1054	6.2	29,175	0.003	0.004	0.004	0.018
1055	7.2	25,395	0.016	0.025	0.020	0.022
1056	6.1	26,052	0.013	0.023	0.018	0.031
1057	7.0	28,019	0.122	0.176	0.149	0.092
1058	5.7	29,150	0.020	0.010	0.015	0.108
1059	5.2	29,096	0.010	0.012	0.011	0.019
1060	6.8	29,021	0.035	0.038	0.037	0.036
1061	5.5	29,062	0.006	0.010	0.008	0.012
1062	5.6	29,062	0.067	0.071	0.069	0.333
1063	4.9	26,025	0.035	0.035	0.035	0.099
1064	6.7	28,977	0.063	0.067	0.065	0.024
1065	5.3	29,018	0.014	0.017	0.016	0.055
1066	7.5	25,005	0.025	0.083	0.054	0.589
1067	6.1	25,901	0.032	0.023	0.027	0.068
1068	6.2	25,787	0.037	0.020	0.028	0.124
1069	5.8	28,865	0.037	0.021	0.029	0.097
1070	6.3	28,778	0.175	0.186	0.180	0.024
1071	6.0	25,834	0.049	0.022	0.035	0.015
1072	6.5	28,668	0.088	0.076	0.082	0.517
1073	5.1	25,756	0.011	0.013	0.012	0.020
1074	5.8	28,668	0.011	0.028	0.019	0.095
1075	5.7	28,646	0.088	0.105	0.097	0.151
1076	5.3	28,580	0.006	0.007	0.007	-
1077	7.5	24,664	0.154	0.174	0.164	-
1078	6.4	28,469	0.024	0.021	0.023	0.241
1079	6.9	27,241	0.015	0.034	0.024	0.046

Spot #	pI	MW	K12 MG1655 <i>E. coli</i> LF 762 #12 silver gel Spot %	K12 MG1655 <i>E. coli</i> LF 762 #13 silver gel Spot %	Average K12 MG1655 <i>E. coli</i> silver gels Spot %	Cygnus Goat anti- <i>E. coli</i> wb of K12 MG1655 LF 762 #8 Spot %
1080	7.2	24,772	0.013	0.039	0.026	0.031
1081	7.3	24,589	0.052	0.069	0.061	0.013
1082	5.6	28,449	0.042	0.045	0.044	-
1083	7.0	27,144	0.020	0.037	0.028	0.052
1084	7.1	24,697	0.014	0.045	0.030	0.052
1085	6.2	25,400	0.028	0.033	0.030	-
1086	5.4	28,383	0.084	0.102	0.093	0.084
1087	8.0	24,513	0.877	0.919	0.898	-
1088	6.0	25,479	0.176	0.220	0.198	-
1089	6.8	28,293	0.010	0.010	0.010	0.042
1090	6.7	28,226	0.075	0.072	0.074	0.067
1091	5.8	28,142	0.037	0.041	0.039	-
1092	6.4	27,917	0.006	0.008	0.007	-
1093	6.5	27,917	0.004	0.014	0.009	0.007
1094	6.6	27,807	0.176	0.214	0.195	0.038
1095	6.3	24,959	0.029	0.041	0.035	0.092
1096	6.4	27,763	0.009	0.006	0.008	0.018
1097	6.8	27,741	0.023	0.033	0.028	-
1098	8.3	23,984	0.000	0.000	0.000	0.169
1099	6.0	25,007	0.011	0.030	0.021	0.022
1100	7.1	24,093	0.031	0.046	0.038	0.038
1101	7.3	23,946	0.702	0.658	0.680	0.359
1102	nd	nd	0.006	0.007	0.007	0.002
1103	7.0	26,342	0.104	0.088	0.096	0.055
1104	5.8	27,661	0.014	0.007	0.010	0.060
1105	6.2	24,712	0.017	0.010	0.014	0.015
1106	6.1	24,695	0.006	0.005	0.005	0.020
1107	5.6	27,464	0.013	0.009	0.011	-
1108	5.7	27,420	0.003	0.005	0.004	-
1109	5.3	27,310	0.006	0.003	0.004	-
1110	6.3	24,518	0.169	0.237	0.203	0.230
1111	4.9	24,664	0.004	0.015	0.010	-
1112	5.7	27,157	0.058	0.083	0.071	-
1113	6.7	27,035	0.011	0.009	0.010	-
1114	6.4	26,902	0.007	0.011	0.009	-
1115	6.8	26,880	0.174	0.183	0.178	0.017
1116	5.1	26,875	0.005	0.005	0.005	-
1117	6.0	24,331	0.020	0.028	0.024	0.009
1118	6.5	26,792	0.023	0.034	0.029	0.012
1119	8.3	23,208	0.000	0.000	0.000	0.166
1120	nd	nd	0.068	0.071	0.070	0.014
1121	5.0	24,176	0.004	0.004	0.004	-
1122	5.9	24,146	0.014	0.007	0.011	0.043

Spot #	pI	MW	K12 MG1655 <i>E. coli</i> LF 762 #12 silver gel Spot %	K12 MG1655 <i>E. coli</i> LF 762 #13 silver gel Spot %	Average K12 MG1655 <i>E. coli</i> silver gels Spot %	Cygnus Goat anti- <i>E. coli</i> wb of K12 MG1655 LF 762 #8 Spot %
1123	5.6	26,566	0.019	0.019	0.019	-
1124	7.2	23,075	0.000	0.000	0.000	0.091
1125	6.8	26,373	0.013	0.029	0.021	-
1126	5.7	26,434	0.028	0.037	0.033	-
1127	5.4	26,391	0.013	0.014	0.014	0.003
1128	6.1	23,708	0.114	0.126	0.120	0.354
1129	6.7	26,218	0.036	0.047	0.041	0.023
1130	nd	nd	0.005	0.004	0.004	-
1131	6.2	23,620	0.015	0.015	0.015	0.009
1132	5.1	26,083	0.000	0.000	0.000	0.011
1133	6.1	23,531	0.026	0.022	0.024	-
1134	nd	nd	0.005	0.018	0.012	0.002
1135	6.4	25,931	0.055	0.060	0.058	0.018
1136	6.3	23,461	0.726	0.800	0.763	0.351
1137	5.7	23,639	0.099	0.101	0.100	0.015
1138	7.0	25,887	0.033	0.058	0.046	0.039
1139	5.9	23,555	0.007	0.007	0.007	-
1140	5.0	23,554	0.010	0.011	0.011	-
1141	5.8	23,504	0.035	0.080	0.058	0.041
1142	5.6	25,734	0.264	0.227	0.246	0.008
1143	6.7	25,622	0.007	0.015	0.011	0.008
1144	6.2	23,214	0.038	0.035	0.036	-
1145	5.7	25,646	1.174	1.187	1.180	0.295
1146	6.0	23,268	0.017	0.030	0.024	-
1147	5.4	25,471	0.062	0.067	0.064	-
1148	6.8	25,357	0.036	0.030	0.033	-
1149	6.1	23,003	0.050	0.115	0.082	0.123
1150	7.1	21,961	0.013	0.013	0.013	0.005
1151	5.0	23,101	0.092	0.094	0.093	0.013
1152	6.3	22,844	0.006	0.012	0.009	-
1153	6.4	22,844	0.140	0.158	0.149	0.009
1154	5.9	23,049	0.012	0.012	0.012	-
1155	nd	nd	0.004	0.012	0.008	0.002
1156	7.0	24,938	0.017	0.070	0.043	0.004
1157	8.3	21,526	0.573	0.717	0.645	0.530
1158	5.4	24,858	0.003	0.017	0.010	0.003
1159	5.7	22,779	0.005	0.005	0.005	-
1160	5.3	24,726	0.008	0.007	0.008	0.004
1161	6.1	22,403	0.073	0.094	0.084	0.060
1162	6.4	22,368	0.004	0.014	0.009	0.070
1163	7.1	21,204	0.004	0.011	0.008	-
1164	5.1	22,563	0.023	0.030	0.026	0.013
1165	5.7	22,525	0.010	0.018	0.014	-



Spot #	pI	MW	K12 MG1655 <i>E. coli</i> LF 762 #12 silver gel Spot %	K12 MG1655 <i>E. coli</i> LF 762 #13 silver gel Spot %	Average K12 MG1655 <i>E. coli</i> silver gels Spot %	Cygnus Goat anti- <i>E. coli</i> wb of K12 MG1655 LF 762 #8 Spot %
1166	5.5	24,485	0.368	0.416	0.392	0.213
1167	6.8	24,320	0.010	0.008	0.009	-
1168	7.5	21,053	0.343	0.440	0.391	0.246
1169	6.3	22,121	0.045	0.061	0.053	-
1170	5.8	22,289	0.251	0.242	0.246	0.720
1171	6.0	22,255	0.013	0.020	0.017	0.021
1172	6.5	21,998	0.007	0.006	0.006	0.007
1173	5.4	24,157	0.033	0.039	0.036	0.009
1174	5.7	22,205	0.045	0.068	0.057	0.283
1175	5.7	22,205	0.004	0.019	0.012	-
1176	6.2	21,945	0.000	0.000	0.000	0.111
1177	nd	nd	0.009	0.009	0.009	-
1178	6.1	21,910	0.970	0.959	0.964	0.248
1179	6.7	23,967	0.079	0.102	0.090	0.061
1180	8.4	20,675	0.126	0.126	0.126	0.482
1181	7.1	20,618	0.179	0.265	0.222	0.036
1182	5.1	23,752	0.047	0.030	0.039	0.036
1183	6.0	21,884	0.011	0.022	0.016	-
1184	6.3	21,593	0.015	0.045	0.030	-
1185	5.6	21,850	0.006	0.004	0.005	0.023
1186	6.4	21,557	0.257	0.197	0.227	0.335
1187	6.6	21,557	0.092	0.168	0.130	-
1188	5.3	23,500	0.595	0.655	0.625	0.274
1189	5.4	23,500	0.025	0.046	0.035	0.037
1190	6.7	23,371	0.013	0.013	0.013	0.024
1191	5.7	21,698	0.093	0.114	0.104	0.061
1192	6.2	21,364	0.271	0.311	0.291	-
1193	6.1	21,328	0.012	0.017	0.015	0.025
1194	5.9	21,597	0.063	0.079	0.071	-
1195	nd	nd	0.003	0.005	0.004	-
1196	4.9	21,420	0.028	0.024	0.026	-
1197	6.4	21,029	0.000	0.000	0.000	0.026
1198	5.4	22,953	0.004	0.009	0.006	0.005
1199	6.0	21,310	0.000	0.000	0.000	0.003
1200	6.3	20,905	0.167	0.194	0.180	-
1201	6.6	20,870	0.063	0.066	0.065	-
1202	6.9	22,643	0.070	0.071	0.070	0.105
1203	5.8	21,141	0.006	0.011	0.008	0.122
1204	6.7	22,554	0.163	0.160	0.162	0.060
1205	5.6	21,074	0.000	0.000	0.000	0.303
1206	nd	nd	0.010	0.005	0.007	-
1207	5.9	20,973	0.000	0.000	0.000	0.047
1209	nd	nd	0.003	0.005	0.004	-

Spot #	pI	MW	K12 MG1655 <i>E. coli</i> LF 762 #12 silver gel Spot %	K12 MG1655 <i>E. coli</i> LF 762 #13 silver gel Spot %	Average K12 MG1655 <i>E. coli</i> silver gels Spot %	Cygnus Goat anti- <i>E. coli</i> wb of K12 MG1655 LF 762 #8 Spot %
1210	6.0	20,854	0.022	0.025	0.023	0.288
1211	5.3	22,339	0.005	0.017	0.011	0.013
1212	6.3	20,518	0.276	0.300	0.288	0.062
1213	6.1	20,447	0.060	0.077	0.069	0.030
1214	6.5	20,377	0.427	0.334	0.381	0.352
1215	6.2	20,341	0.000	0.000	0.000	0.185
1216	5.7	20,567	0.021	0.037	0.029	-
1217	5.1	20,597	0.069	0.078	0.074	-
1218	6.4	20,200	0.012	0.008	0.010	0.035
1219	6.6	20,024	0.068	0.071	0.070	0.017
1220	5.6	20,264	0.019	0.015	0.017	-
1221	6.7	19,883	0.040	0.081	0.061	0.021
1222	6.8	21,363	0.168	0.142	0.155	0.028
1223	7.3	18,425	0.035	0.123	0.079	-
1224	6.2	19,672	0.080	0.074	0.077	-
1225	6.9	21,142	0.035	0.047	0.041	0.102
1226	5.9	19,994	0.035	0.035	0.035	-
1227	6.5	19,619	0.146	0.169	0.157	0.027
1228	6.4	19,601	0.468	0.453	0.461	0.123
1229	4.9	19,992	0.013	0.016	0.015	-
1230	5.3	21,113	0.139	0.168	0.154	-
1231	6.7	19,460	0.033	0.033	0.033	0.030
1232	6.6	19,443	1.778	1.771	1.775	0.092
1233	6.8	19,354	0.228	0.263	0.245	0.019
1234	7.8	18,009	0.719	0.560	0.639	0.245
1235	6.0	19,639	0.019	0.025	0.022	0.032
1236	5.4	19,622	0.030	0.026	0.028	0.021
1237	5.5	19,622	0.128	0.207	0.167	-
1238	8.1	17,914	0.829	0.854	0.841	0.251
1239	5.7	19,588	0.049	0.070	0.059	0.007
1240	5.9	19,572	0.054	0.066	0.060	0.068
1241	7.3	17,858	0.017	0.029	0.023	-
1242	6.2	19,143	0.000	0.000	0.000	0.027
1243	4.9	19,521	0.024	0.021	0.022	0.118
1244	6.4	19,037	0.010	0.023	0.016	0.008
1245	6.5	19,020	0.011	0.019	0.015	0.014
1246	5.6	19,369	0.000	0.000	0.000	0.204
1247	5.8	19,302	0.049	0.081	0.065	-
1248	6.6	18,914	0.016	0.014	0.015	0.044
1249	5.3	20,281	0.010	0.017	0.014	-
1250	6.8	18,808	0.038	0.053	0.045	0.197
1251	6.7	18,790	0.000	0.000	0.000	0.091
1252	5.4	19,133	0.038	0.051	0.044	0.036

Spot #	pI	MW	K12 MG1655 <i>E. coli</i> LF 762 #12 silver gel Spot %	K12 MG1655 <i>E. coli</i> LF 762 #13 silver gel Spot %	Average K12 MG1655 <i>E. coli</i> silver gels Spot %	Cygnus Goat anti- <i>E. coli</i> wb of K12 MG1655 LF 762 #8 Spot %
1253	5.8	19,133	0.051	0.071	0.061	-
1254	6.2	18,685	0.000	0.000	0.000	0.038
1255	5.9	18,964	0.044	0.065	0.055	-
1256	5.6	18,896	0.012	0.014	0.013	-
1257	7.6	16,969	0.070	0.080	0.075	0.044
1258	8.1	16,969	0.967	1.110	1.039	0.755
1259	nd	nd	0.000	0.000	0.000	0.421
1260	5.7	18,728	0.077	0.092	0.084	0.016
1261	6.3	18,209	0.015	0.019	0.017	0.176
1262	5.5	18,610	0.006	0.018	0.012	-
1263	6.0	18,610	0.032	0.049	0.040	0.033
1264	5.8	18,576	0.004	0.009	0.006	0.006
1265	6.9	18,103	0.007	0.011	0.009	0.046
1266	5.9	18,508	0.304	0.345	0.324	0.053
1267	6.2	18,068	0.014	0.025	0.019	0.082
1268	5.7	18,474	0.022	0.018	0.020	0.003
1269	6.8	17,997	0.005	0.005	0.005	0.066
1270	5.6	18,306	0.000	0.000	0.000	0.114
1271	6.5	17,874	0.000	0.000	0.000	0.107
1272	7.3	16,616	0.009	0.017	0.013	-
1273	5.0	18,210	0.014	0.012	0.013	0.071
1274	5.9	18,103	0.060	0.073	0.067	0.009
1275	5.7	18,069	0.068	0.084	0.076	-
1276	5.8	18,069	0.003	0.035	0.019	0.051
1277	8.1	16,387	1.588	1.264	1.426	0.071
1278	6.4	17,521	0.450	0.465	0.458	0.035
1279	5.3	17,951	0.132	0.150	0.141	0.249
1280	5.5	17,951	0.011	0.012	0.011	0.015
1281	6.0	17,951	0.063	0.068	0.066	0.345
1282	6.1	17,504	0.035	0.049	0.042	0.087
1283	6.2	17,486	1.109	1.182	1.146	0.453
1284	5.4	17,917	0.005	0.008	0.007	0.066
1285	6.6	17,451	0.043	0.067	0.055	-
1286	7.2	16,229	0.045	0.049	0.047	0.222
1287	6.8	17,398	0.023	0.038	0.030	-
1288	6.5	17,380	0.735	0.687	0.711	0.007
1289	6.9	17,345	0.040	0.055	0.048	-
1290	8.4	16,141	0.060	0.165	0.112	0.280
1291	5.9	17,749	0.190	0.233	0.211	-
1292	5.6	17,715	0.024	0.037	0.030	0.498
1293	7.0	16,001	0.421	0.588	0.505	0.100
1294	5.1	17,689	0.017	0.008	0.013	-
1295	6.9	17,081	0.020	0.028	0.024	-

Spot #	pI	MW	K12 MG1655 <i>E. coli</i> LF 762 #12 silver gel Spot %	K12 MG1655 <i>E. coli</i> LF 762 #13 silver gel Spot %	Average K12 MG1655 <i>E. coli</i> silver gels Spot %	Cygnus Goat anti- <i>E. coli</i> wb of K12 MG1655 LF 762 #8 Spot %
1296	5.8	17,462	0.002	0.002	0.002	-
1297	nd	nd	0.000	0.000	0.000	0.268
1298	6.9	16,905	0.154	0.181	0.168	-
1299	7.4	15,702	0.049	0.092	0.071	-
1300	7.3	15,666	0.112	0.141	0.126	-
1301	8.3	15,596	0.363	0.265	0.314	0.278
1302	5.3	17,225	0.005	0.005	0.005	-
1303	6.5	16,711	0.010	0.011	0.010	0.078
1304	5.8	17,158	0.556	0.672	0.614	0.264
1305	6.2	16,640	0.074	0.096	0.085	0.094
1306	6.8	16,640	0.010	0.024	0.017	1.381
1307	5.7	17,107	0.032	0.045	0.038	0.006
1308	6.0	17,107	0.018	0.029	0.024	0.039
1309	6.4	16,570	0.004	0.004	0.004	0.037
1310	5.6	16,888	0.000	0.000	0.000	0.056
1311	5.7	16,888	0.103	0.145	0.124	0.310
1312	7.1	15,192	0.136	0.228	0.182	0.564
1313	6.6	16,305	0.015	0.031	0.023	-
1314	nd	nd	0.015	0.020	0.017	1.506
1315	4.9	16,715	0.807	1.000	0.904	0.106
1316	5.5	16,652	0.075	0.098	0.086	0.024
1317	6.3	16,076	0.070	0.116	0.093	0.014
1318	5.8	16,567	0.021	0.029	0.025	0.003
1319	5.2	16,735	0.589	0.526	0.557	0.170
1320	5.7	16,500	0.030	0.044	0.037	-
1321	7.5	14,788	0.073	0.101	0.087	0.125
1322	6.4	15,953	0.006	0.009	0.007	0.080
1323	6.2	15,935	0.128	0.157	0.142	-
1324	7.9	14,629	0.127	0.084	0.105	0.258
1325	5.7	16,162	0.005	0.006	0.006	-
1326	5.4	16,010	0.030	0.034	0.032	0.016
1327	7.6	14,295	0.000	0.000	0.000	0.062
1328	5.6	15,943	0.019	0.017	0.018	-
1329	5.9	15,909	0.017	0.027	0.022	-
1330	7.2	14,172	0.008	0.009	0.008	-
1331	6.7	15,283	0.037	0.059	0.048	0.020
1332	7.0	14,067	0.009	0.019	0.014	-
1333	5.1	15,790	0.007	0.010	0.009	0.014
1334	6.0	15,723	0.284	0.376	0.330	0.008
1335	5.7	15,521	0.047	0.067	0.057	0.023
1336	6.8	14,895	0.052	0.066	0.059	-
1337	4.9	15,505	0.000	0.000	0.000	0.350
1338	5.5	15,403	0.084	0.133	0.109	0.171



Spot #	pI	MW	K12 MG1655 <i>E. coli</i> LF 762 #12 silver gel Spot %	K12 MG1655 <i>E. coli</i> LF 762 #13 silver gel Spot %	Average K12 MG1655 <i>E. coli</i> silver gels Spot %	Cygnus Goat anti- <i>E. coli</i> wb of K12 MG1655 LF 762 #8 Spot %
1339	7.0	13,824	0.027	0.050	0.038	-
1340	6.5	14,807	0.017	0.042	0.030	0.007
1341	5.3	15,352	0.245	0.313	0.279	0.131
1342	6.1	14,596	0.017	0.024	0.021	-
1343	7.5	13,399	0.247	0.260	0.254	0.131
1344	6.0	15,132	0.025	0.052	0.038	-
1345	5.7	15,014	0.025	0.037	0.031	0.028
1346	5.9	14,896	0.013	0.015	0.014	0.078
1347	5.2	14,862	0.533	0.493	0.513	0.951
1348	7.4	13,065	0.041	0.038	0.039	0.034
1349	5.4	14,795	0.000	0.000	0.000	0.151
1350	6.5	14,190	0.179	0.384	0.281	0.062
1351	5.6	14,727	0.023	0.032	0.028	-
1352	6.1	14,120	0.013	0.018	0.016	-
1353	7.0	13,105	0.000	0.000	0.000	0.165
1354	6.2	14,067	0.117	0.110	0.114	-
1355	6.6	13,697	0.019	0.039	0.029	-
1356	5.0	14,362	0.017	0.011	0.014	0.006
1357	5.5	14,255	0.000	0.000	0.000	0.140
1358	5.3	13,940	0.000	0.000	0.000	0.017
1359	5.7	13,713	0.009	0.010	0.010	-
1360	5.5	13,220	0.000	0.000	0.000	0.269
1361	7.2	11,854	0.823	0.962	0.893	33.084
1362	5.7	13,047	0.012	0.019	0.015	0.209
1363	5.3	12,727	0.028	0.049	0.038	-
1364	5.5	12,628	0.003	0.013	0.008	-
1365	5.8	75,281	0.027	0.058	0.043	0.008
1366	5.9	75,618	0.071	0.066	0.069	0.029
1367	6.1	128,211	0.003	0.004	0.003	-
1368	nd	nd	0.004	0.005	0.004	-
1369	5.3	56,343	0.009	0.004	0.007	-
1370	5.4	53,023	0.020	0.012	0.016	-
1371	5.4	56,445	0.005	0.007	0.006	-
1372	5.5	55,430	0.004	0.004	0.004	-
1373	5.6	59,487	0.005	0.005	0.005	-
1374	7.1	68,735	0.024	0.017	0.021	0.003
1375	7.2	61,567	0.385	0.218	0.301	0.143
1376	8.0	52,479	0.165	0.124	0.145	-
1377	6.1	37,592	0.009	0.011	0.010	-
1378	6.1	26,774	0.104	0.070	0.087	-
1379	6.1	135,255	0.006	0.006	0.006	0.000
1380	6.1	136,769	0.077	0.131	0.104	0.005
1381	6.6	138,283	0.000	0.000	0.000	0.006

Spot #	pI	MW	K12 MG1655 <i>E. coli</i> LF 762 #12 silver gel Spot %	K12 MG1655 <i>E. coli</i> LF 762 #13 silver gel Spot %	Average K12 MG1655 <i>E. coli</i> silver gels Spot %	Cygnus Goat anti- <i>E. coli</i> wb of K12 MG1655 LF 762 #8 Spot %
1382	5.6	74,944	0.000	0.000	0.000	0.005
1383	5.9	75,281	0.000	0.000	0.000	0.016
1384	6.3	51,612	0.000	0.000	0.000	0.038
1385	6.7	48,860	0.000	0.000	0.000	0.003
1386	6.8	48,360	0.000	0.000	0.000	0.005
1387	nd	nd	0.000	0.000	0.000	0.006
1388	5.8	35,914	0.000	0.000	0.000	0.004
1389	6.1	44,157	0.000	0.000	0.000	0.003
1390	6.8	35,616	0.000	0.000	0.000	0.007
1391	8.2	43,526	0.000	0.000	0.000	0.014
1392	8.1	31,705	0.000	0.000	0.000	0.045
1393	8.5	33,568	0.000	0.000	0.000	0.029
1394	8.5	35,723	0.000	0.000	0.000	0.014
1395	5.1	27,840	0.000	0.000	0.000	0.003
1396	5.2	29,558	0.000	0.000	0.000	0.063
1397	5.5	29,236	0.000	0.000	0.000	0.002
1398	5.6	32,653	0.000	0.000	0.000	0.005
1399	5.7	29,960	0.000	0.000	0.000	0.009
1400	7.5	27,879	0.000	0.000	0.000	0.084
1401	5.6	25,033	0.000	0.000	0.000	0.026
1402	6.1	26,404	0.000	0.000	0.000	0.010
1403	7.0	23,320	0.000	0.000	0.000	0.028
1404	5.7	20,719	0.000	0.000	0.000	0.077
1405	7.5	18,122	0.000	0.000	0.000	0.322
1406	7.4	17,045	0.000	0.000	0.000	0.080
1407	7.5	17,158	0.000	0.000	0.000	0.011
1408	6.1	15,213	0.000	0.000	0.000	0.018
1409	6.7	20,271	0.082	0.157	0.119	0.104
1410	7.8	19,465	0.601	0.584	0.593	5.637

## **Materials and Methods**

Two-dimensional electrophoresis was performed according to the carrier ampholine method of isoelectric focusing (O'Farrell, P.H., *J. Biol. Chem.* 250: 4007-4021, 1975; Burgess-Cassler, A., Johansen, J., Santek, D., Ide J., and Kendrick N., *Clin. Chem.* 35: 2297, 1989) by Kendrick Labs, Inc. (Madison, WI). Isoelectric focusing was carried out in a glass tube of inner diameter 3.3 mm using 2.0% pH 3-10 Isodalt Servalytes (Serva, Heidelberg, Germany) for 20,000 volt-hrs. One ug (PVDF) or 100 ng (silver) of an IEF internal standard, tropomyosin, was added to each sample. This protein migrates as a doublet with lower polypeptide spot of MW 33,000 and pI 5.2; an arrow on the stained gels marks its position. The enclosed tube gel pH gradient plot for this set of Servalytes was determined with a surface pH electrode.

After equilibration for 10 min in buffer "O" (10% glycerol, 50mM dithiothreitol, 2.3% SDS and 0.0625 M tris, pH 6.8), each tube gel was sealed to the top of a stacking gel that overlaid a 10% acrylamide slab gel (1.0 mm thick). SDS slab gel electrophoresis was carried out for about 5 hrs at 25 mA/gel. The following proteins (Sigma Chemical Co., St. Louis, MO) were used as molecular weight standards: myosin (220,000), phosphorylase A (94,000), catalase (60,000), actin (43,000) carbonic anhydrase (29,000) and lysozyme (14,000). These standards appear as bands at the basic edge of the silver-stained (Oakley, B.R., Kirsch, D.R. and Moris, N.R. *Anal. Biochem.* 105:361-363, 1980) 10% acrylamide slab gels. The gels were dried between sheets of cellophane paper with the acid edge to the left.

After slab gel electrophoresis, the gel for blotting was placed in transfer buffer (10 mM CAPS, pH 11.0, 10% methanol) and transblotted onto PVDF membranes overnight at 225 mA and approximately 100 volts/ two gels. The same proteins (Sigma Chemical Co., St. Louis, MO) were used as molecular weight standards: myosin (220,000), phosphorylase A (94,000), catalase (60,000), actin (43,000) carbonic anhydrase (29,000) and lysozyme (14,000). These standards appear as bands at the basic edge of the Coomassie Brilliant Blue R-250-stained membrane.

## **Western Blotting Methods**

The blot was stained with Coomassie Brilliant Blue R-250 and desktop scanned. The blot was blocked for two hours in 5% Carnation Nonfat Dry Milk (NFDM) in Tween-20 tris buffer saline (TTBS) and rinsed in TTBS. The blot was then incubated in primary antibody (Goat anti-*E. coli* [Cygnus Cat. # AP117 and Lot # 99] diluted to 0.5 µg/ml in 2% NFDM TTBS) overnight and rinsed 3 x 10 minutes in TTBS. The blot was then placed in secondary antibody (Anti Goat IgG-HRP [Sigma Cat. # A5420 and Lot # 090M4822] 1:10,000 diluted in 2% NFDM) for two hours, rinsed in TTBS as above, treated with ECL, and exposed to x-ray film (1 minute, 3 minute, and 10 minute exposures).

## **Computerized Comparisons**

Western blot films (1 minute and 3 minute exposures) and duplicate silver-stained gels were obtained from the sample and scanned with a laser densitometer (Model PDSI, Molecular Dynamics Inc, Sunnyvale, CA). The scanner was checked for linearity prior to scanning with a calibrated Neutral Density Filter Set (Melles Griot, Irvine, CA). The images were analyzed using Progenesis Same Spots software (version 4.5, 2011, Nonlinear Dynamics, Durham, NC) and Progenesis PG240 software (version 2006, Nonlinear Dynamics, Durham, NC). The general method of computerized analysis for these pairs included image warping in conjunction with detailed manual checking. The lighter exposure of the western blot films was used to aid in spot matching for the overexposed areas of the darker exposure. Spots detected with the antibody were added to the master spot set even if not detectable by silver staining.

## **MW and pI Measurements**

Note that the isoelectric point (pI) measurements are approximate being based on the pH gradient plot found on the next page for this batch of ampholines for conditions of 9M urea and room temperature of 22°C. Since the samples themselves may perturb the pH gradient, internal pI standards should be included if more exact pI measurements are required. The molecular weight and pI values for each spot are determined from algorithms applied to the reference image.

## pH Gradient Plot LF 3-10 Iso-dalt

Name: Kendrick Laboratories, Inc.

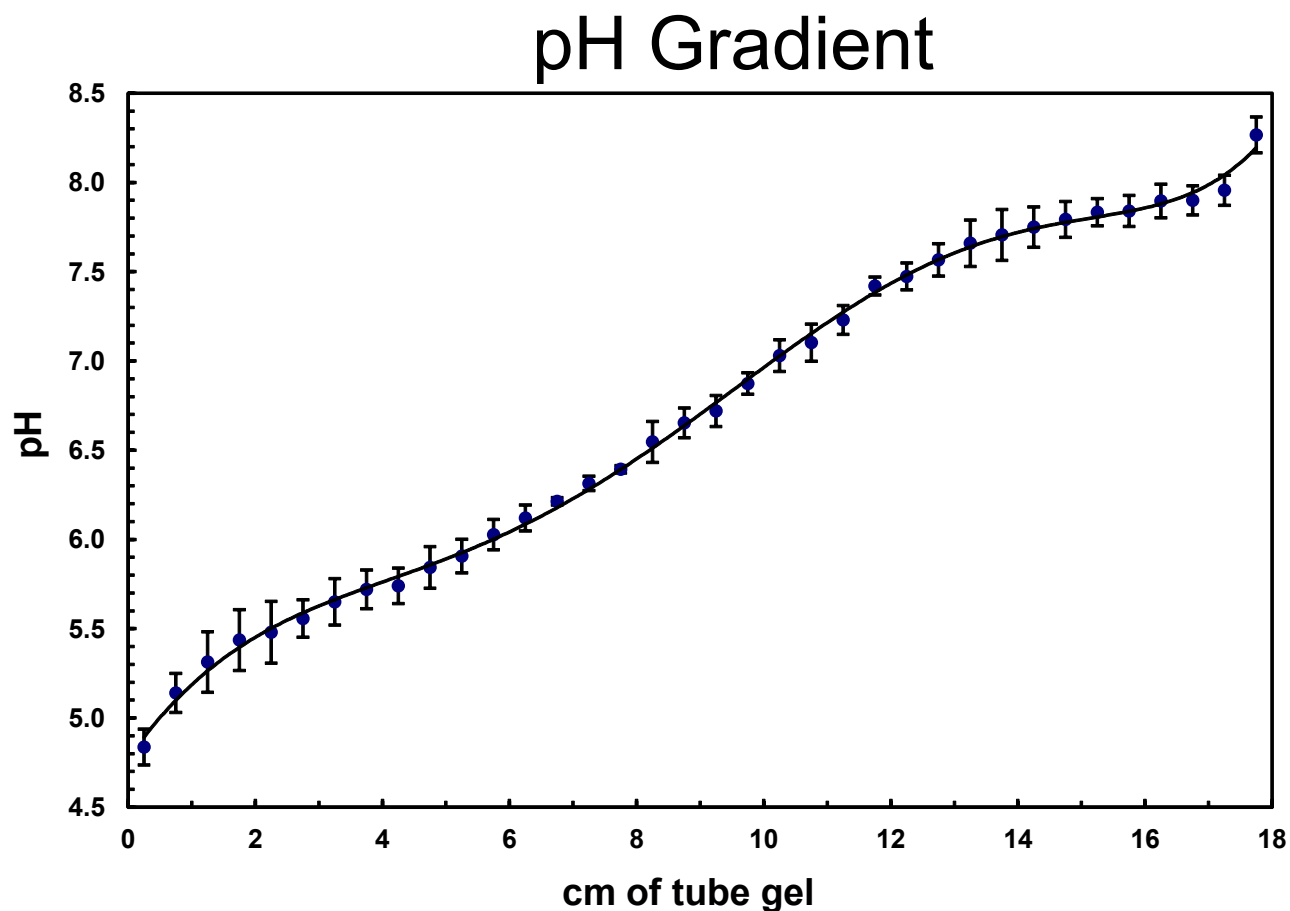
Date: 3/5/2014

Sample(s): K12 MG1655 *E. coli*

Ampholines: 2% pH 3-10 Iso-dalt Servalytes

Conditions of IEF: 20,000 VHrs. (20 Hrs. at 1,000 V)

Comments:



This pH gradient was measured using a surface pH electrode for 6 blank IEF tube gels.

The dried slab gel for the second dimension is 20 cm wide with a 2D pattern about 18.5 cm wide. If SDS has been added to the sample, an SDS-NP-40 micelle migrates to the extreme acid end of the tube gel, constricting the pH gradient. In this case, the tube gels are poured long and the SDS bulb is cut off and discarded. The dried 2D pattern for samples containing SDS is also about 18 cm wide.

The black arrow on your 2D gel indicates our internal standard, Tropomyosin, pI 5.2 and molecular weight 32,700. The molecular weight standard lines are due to myosin (220,000), phosphorylase A (94,000), catalase (60,000), actin (43,000), carbonic anhydrase (29,000), and lysozyme (14,000) which have been added to the sealing agarose.



## Western Blotting Checksheet

Client: Kendrick E. coli HCP Test    Company: Kendrick Labs    Date: 3/3/14

Samples: K12 MG1655 E. coli

Date Rcvd: 2/24/14

Gel ID: LF762 #6-11

Analyst: AK

**Reagents:**

Reagent	Lot #
Tris Buffered Saline (TBS)	KEN021714T
Tween 20	KEN102513T
Block: Non Fat Dry Milk (NFDM)	JUN1915S 17:40

**Block**

Blocking Solution: 5% NFDM

Incubation Time: 2 hrs

**Primary Antibody**

Gel ID	1° Antibody	Dilution	Company	Cat #	Lot#	Revd	Stored
LF762 #6	Goat anti-E. coli	0.5 µg/mL	Cygnus	AP117	99	12/17/13	Fridge B2
LF762 #7	Goat anti-E. coli	0.5 µg/mL	Cygnus	AP117	99	12/17/13	Fridge B2
LF762 #8	Goat anti-E. coli	0.5 µg/mL	Cygnus	AP117	99	12/17/13	Fridge B2
LF762 #9	Goat anti-E. coli	0.5 µg/mL	Cygnus	AP117	99	12/17/13	Fridge B2
LF762 #10	Goat anti-E. coli	0.5 µg/mL	Cygnus	AP117	99	12/17/13	Fridge B2
LF762 #11	Goat anti-E. coli	0.5 µg/mL	Cygnus	AP117	99	12/17/13	Fridge B2

Buffer: 2% NFDM

Incubation Time: Overnight

**Secondary Antibody**

Gel ID	2° Antibody	Dilution	Company	Cat #	Lot#	Stored
LF762 #6	Anti Goat IgG-HRP	1:10,000	Sigma	A5420	052M4752	Freezer I
LF762 #7	Anti Goat IgG-HRP	1:10,000	Sigma	A5420	052M4752	Freezer I
LF762 #8	Anti Goat IgG-HRP	1:10,000	Sigma	A5420	052M4752	Freezer I
LF762 #9	Anti Goat IgG-HRP	1:10,000	Sigma	A5420	052M4752	Freezer I
LF762 #10	Anti Goat IgG-HRP	1:10,000	Sigma	A5420	052M4752	Freezer I
LF762 #11	Anti Goat IgG-HRP	1:10,000	Sigma	A5420	052M4752	Freezer I

Buffer: 2% NFDM

Incubation Time: 2 hours

**ECL Film Development**

ECL: Pierce ECL (Thermo)

Cat#: 32106

Lot#: OI191210A

Film: GE Amersham Hyperfilm ECL

Cat#: 28906838

Lot#: 46402

Gel ID	Exposure Time	Results
LF762 #6-11	1 <sup>st</sup> : 1 min	Good Light Exposure
	2 <sup>nd</sup> : 3 min	Good Exposure
	3 <sup>rd</sup> : 10 min	Good Dark Exposure

**Comments:**

*Andrew Kroll*  
Person Completing Form

3/5/14  
Date

*Mark Harts*  
Reviewed By

3/5/14  
Date