

## Example Report

Computerized Analysis of Polypeptides  
Resolved by 2D Electrophoresis and Western Blotting for sample:

**K12 MG1655 *E. coli* versus  
Cygnus Goat Anti-*E. coli* antibody, Cat. # AP117, Lot # 99**

Prepared for: Kendrick Laboratories, Inc  
1202 Ann Street  
Madison, WI 53713  
1 800 462-3417

By: Kendrick Laboratories, Inc  
1202 Ann Street  
Madison, WI 53713  
1 800 462-3417

Report Prepared by: Isaac O'Malley-Laurson Date: 9/27/23  
Isaac O'Malley-Laurson, Senior 2D Analyst, Kendrick Labs Inc

Approved by: Christina Rose Date: 9/27/23  
Christina Rose, QA Manager, Kendrick Labs Inc

Nancy Kendrick Date: 9/27/23  
Nancy Kendrick, PhD, Senior QA Associate, Kendrick Labs Inc

**Samples Compared:**

- Silver-stained 2D gel of K12 MG1655 *E. coli* (LF762 #12-13)  
vs. western blot film from Cygnus Goat Anti-*E. coli* antibody against K12 MG1655 *E. coli* (LF762 #8).

<b><u>Page</u></b>	<b><u>Contents</u></b>
2 - 5	Images showing spot differences and sample overlay of comparison 1 (Figs 1 - 4).
6, 7	Images showing all spot numbering (Figs 5, 6).
8 - 10	Images without spot circling (Figs 7 - 9).
11 - 58	Summary table showing spot percentage, pI and MW (Table 1).
59, 60	Methods and pH Gradient.
61	Western Blotting Checksheet.

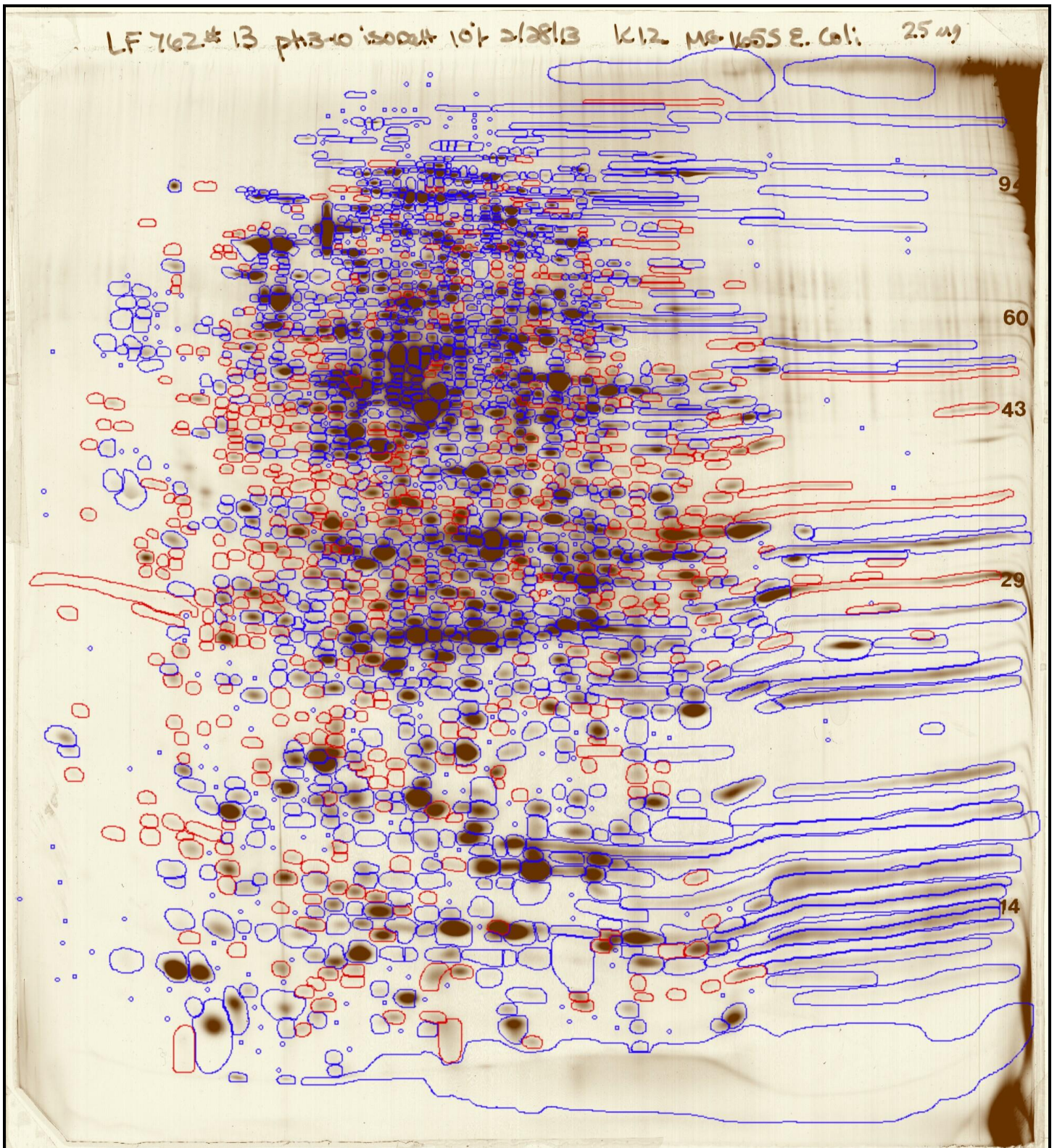


Figure 1. Image of K12 MG1655 *E. coli* silver-stained gel (LF762 #12-13) showing Cygnus Goat Anti-*E. coli* antibody western blot (LF762 #8) matches. Spots present on the silver-stained gel but missing from the western blot are outlined in **red**. Spots present in both the silver-stained gel and the western blot are outlined in **blue**. Spots detected with the antibody but not detectable by silver staining are indicated with small blue dots on the silver-stained gel and added to the total spot number. The Cygnus Goat Anti-*E. coli* antibody detected **1550 spots out of 2120 spots** (73%) found. Spot numbering is provided in Figures 5 and 6; spot data is provided in Table 1.

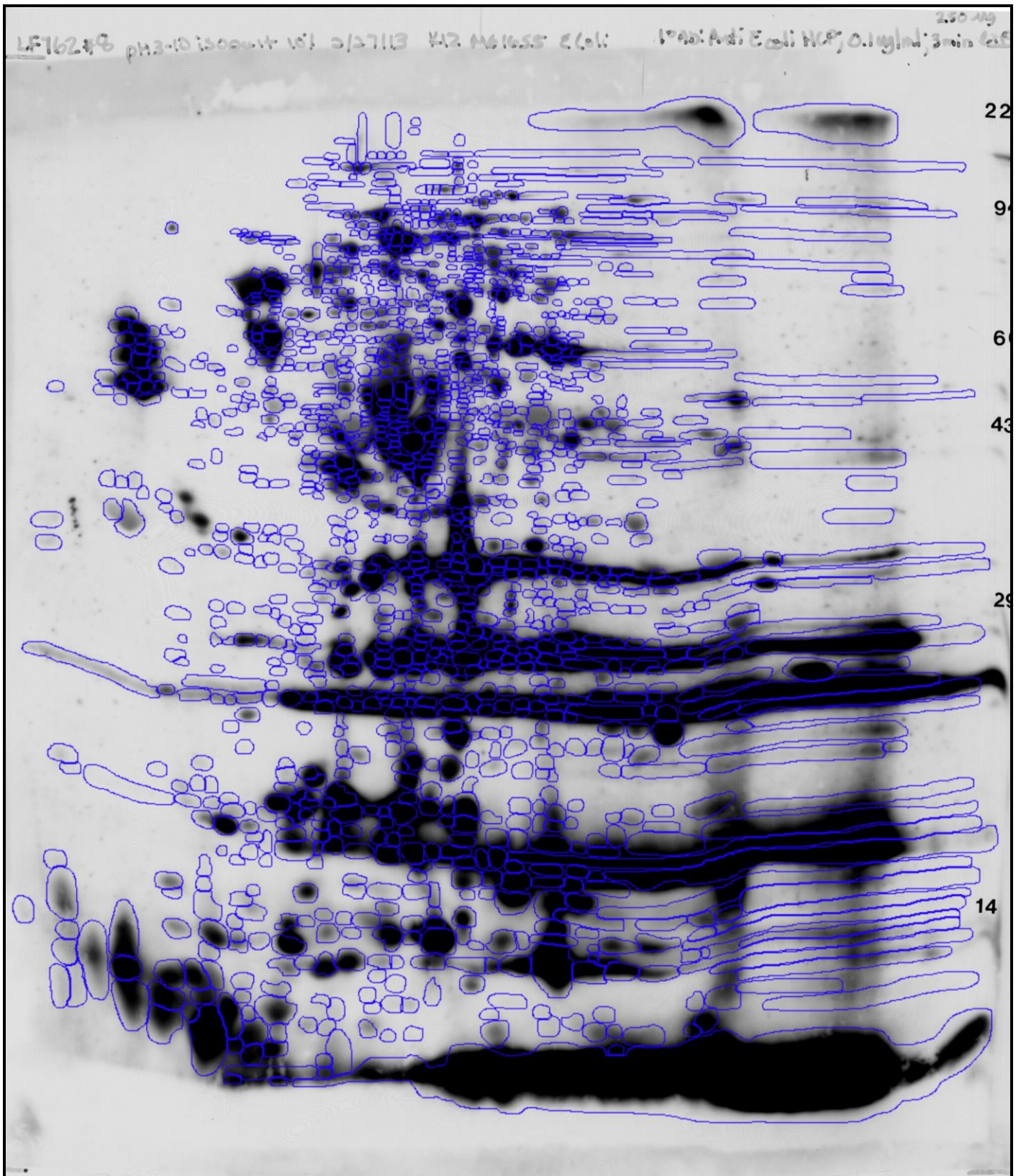


Figure 2. Dark western blot film image of Cygnus Goat Anti-*E. coli* antibody against K12 MG1655 *E. coli* (LF762 #8, 3-minute exposure). All spots detected on the dark and light exposures of the western blot are outlined in blue. The Cygnus Goat Anti-*E. coli* antibody detected **1550 spots**. Spot circling of the overexposed areas of the film can be more clearly seen on the light exposure film (Figure 3). Spot numbering is provided in Figures 5 and 6; spot data is provided in Table 1.

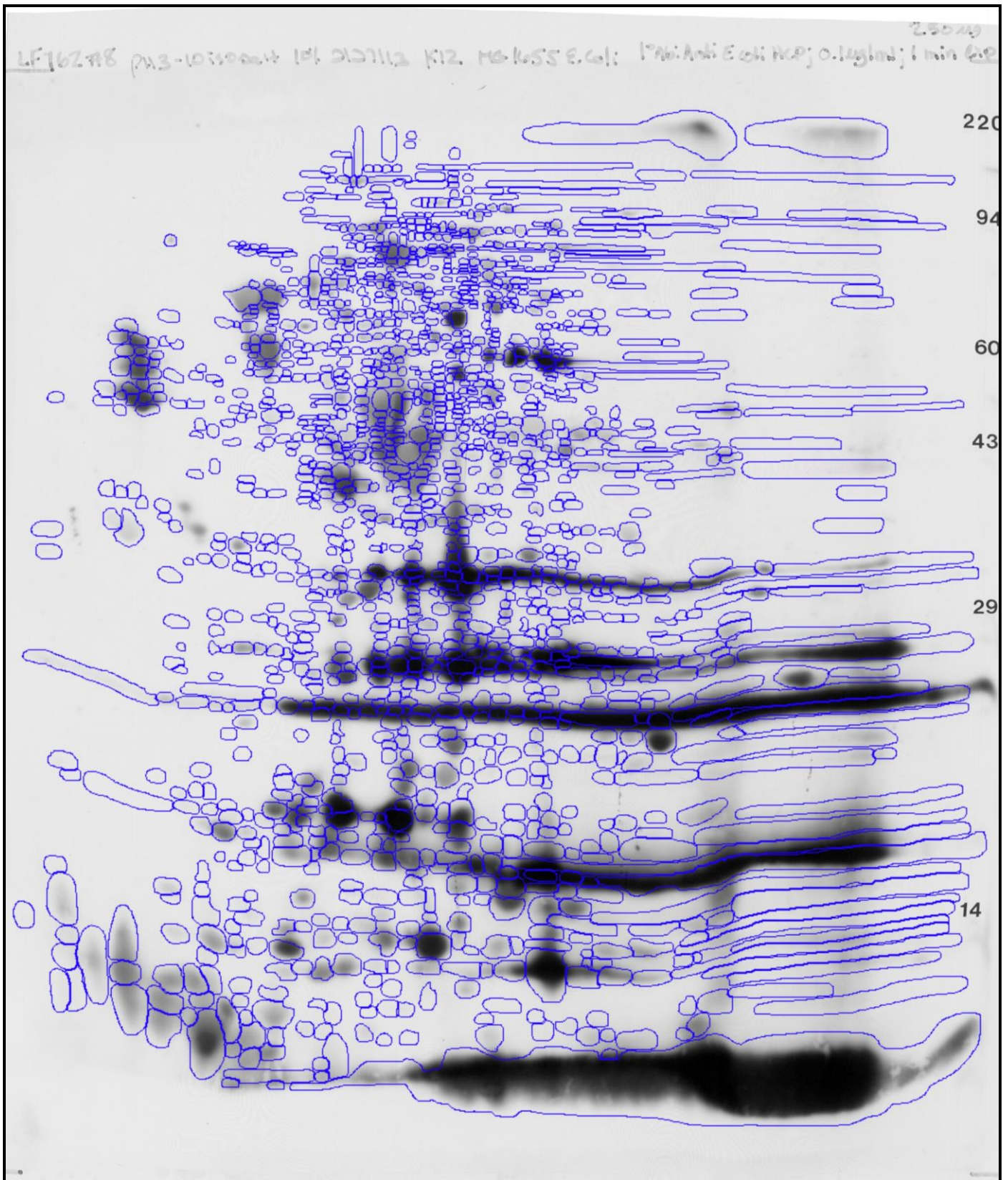


Figure 3. Light western blot film image of Cygnus Goat Anti-*E. coli* antibody against K12 MG1655 *E. coli* (LF762 #8, 1-minute exposure). All spots detected on the dark and light exposures of the western blot are outlined in **blue**. The Cygnus Goat Anti-*E. coli* antibody detected **1550 spots**. Spot numbering is provided in Figures 5 and 6; spot data is provided in Table 1.

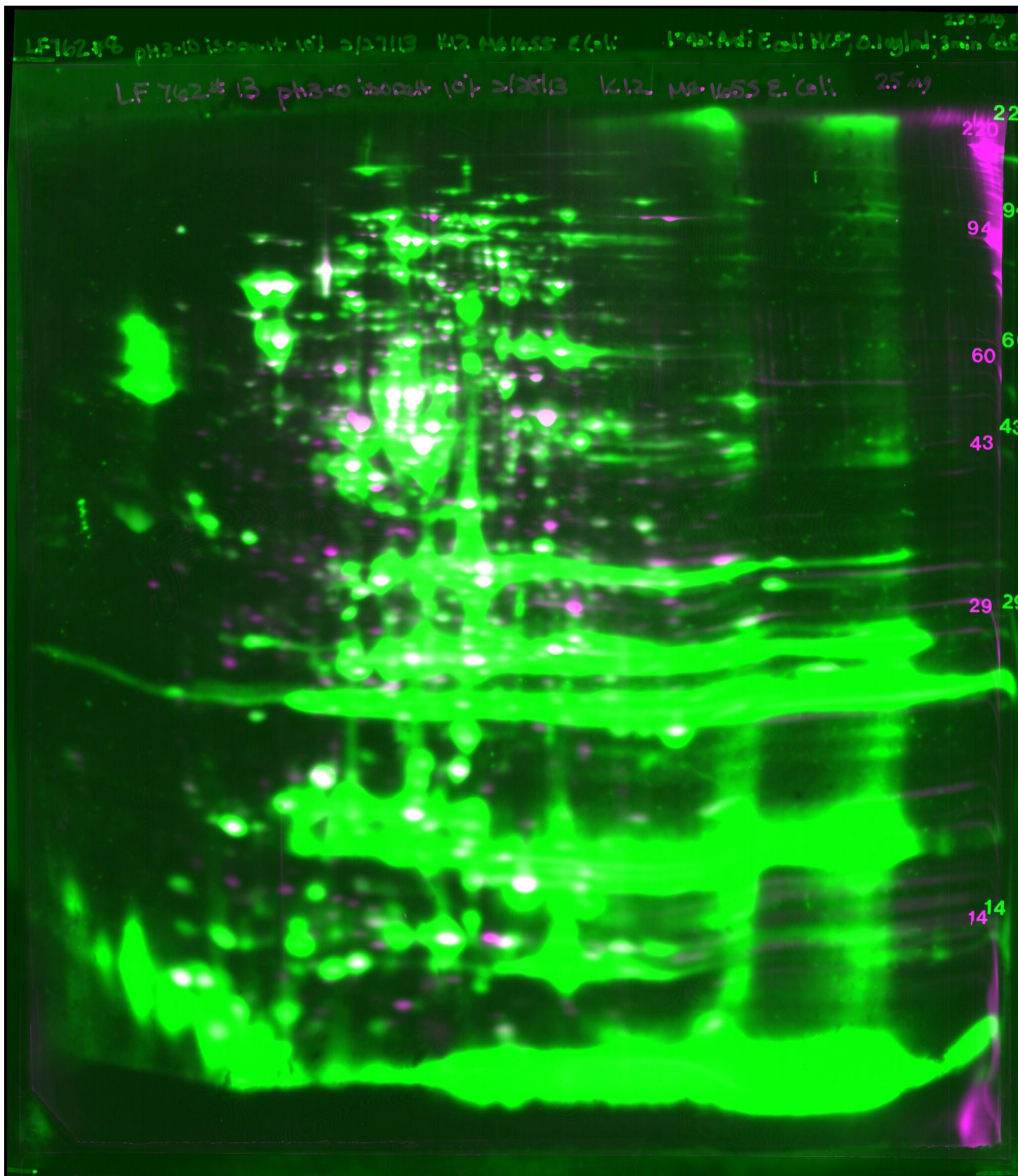


Figure 4. Overlay image showing silver-stained 2D gel of K12 MG1655 *E. coli* (LF762 #13) in magenta overlaying western blot film image of Cygnus Goat Anti-*E. coli* antibody against K12 MG1655 *E. coli* (LF762 #8, 3-minute exposure) in green. Image appears white where spots of similar intensity overlay each other.

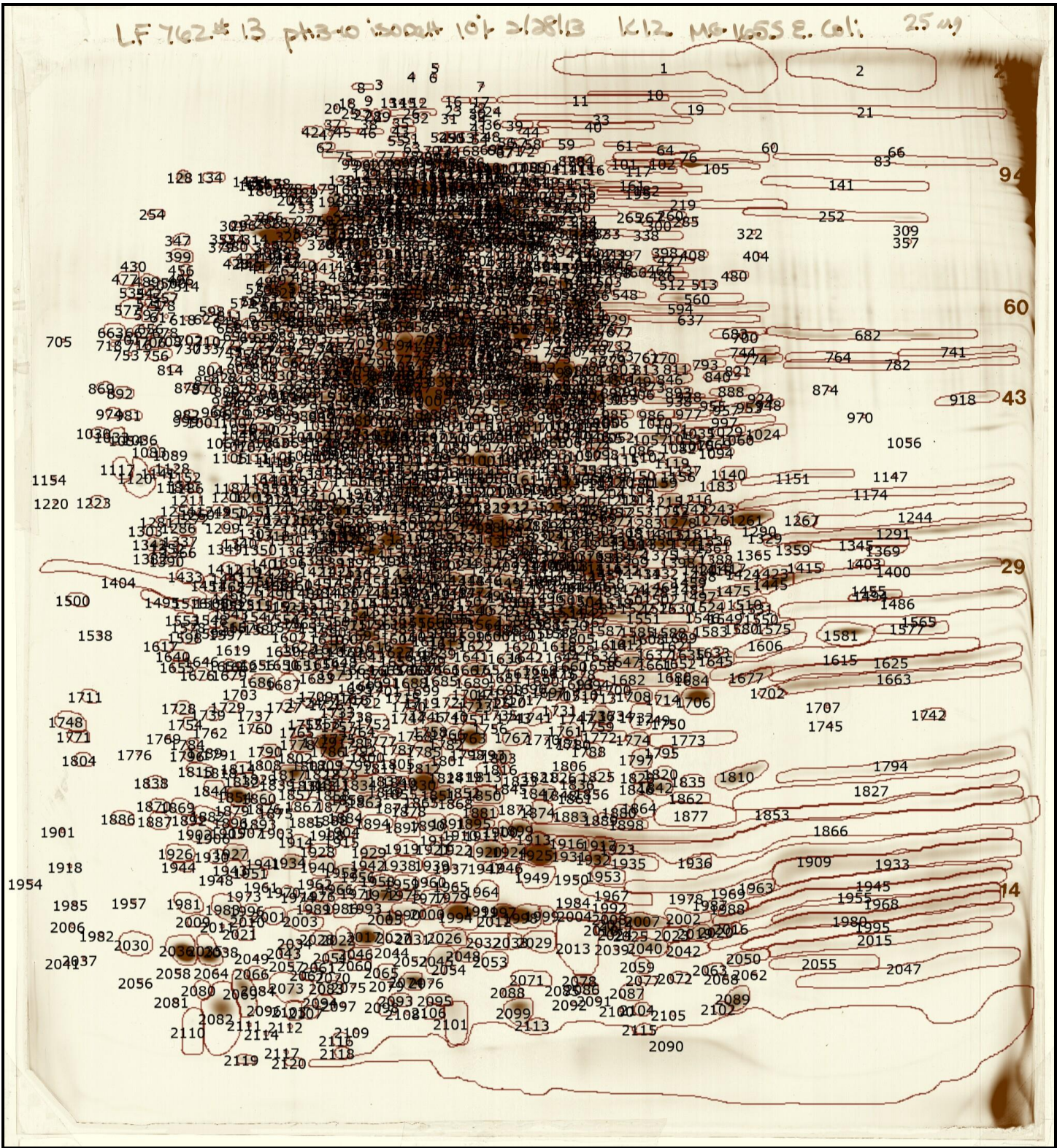


Figure 5. All spot numbering for silver-stained gel image of K12 MG1655 *E. coli* (LF762 #13). Spots detected with the antibody but not detectable by silver staining are indicated with small dots on the silver-stained gel. Spot numbers are best viewed on the computer screen. Magnified images to show greater detail will be provided on request. Spot data, including pI and MW can be found in Table 1.

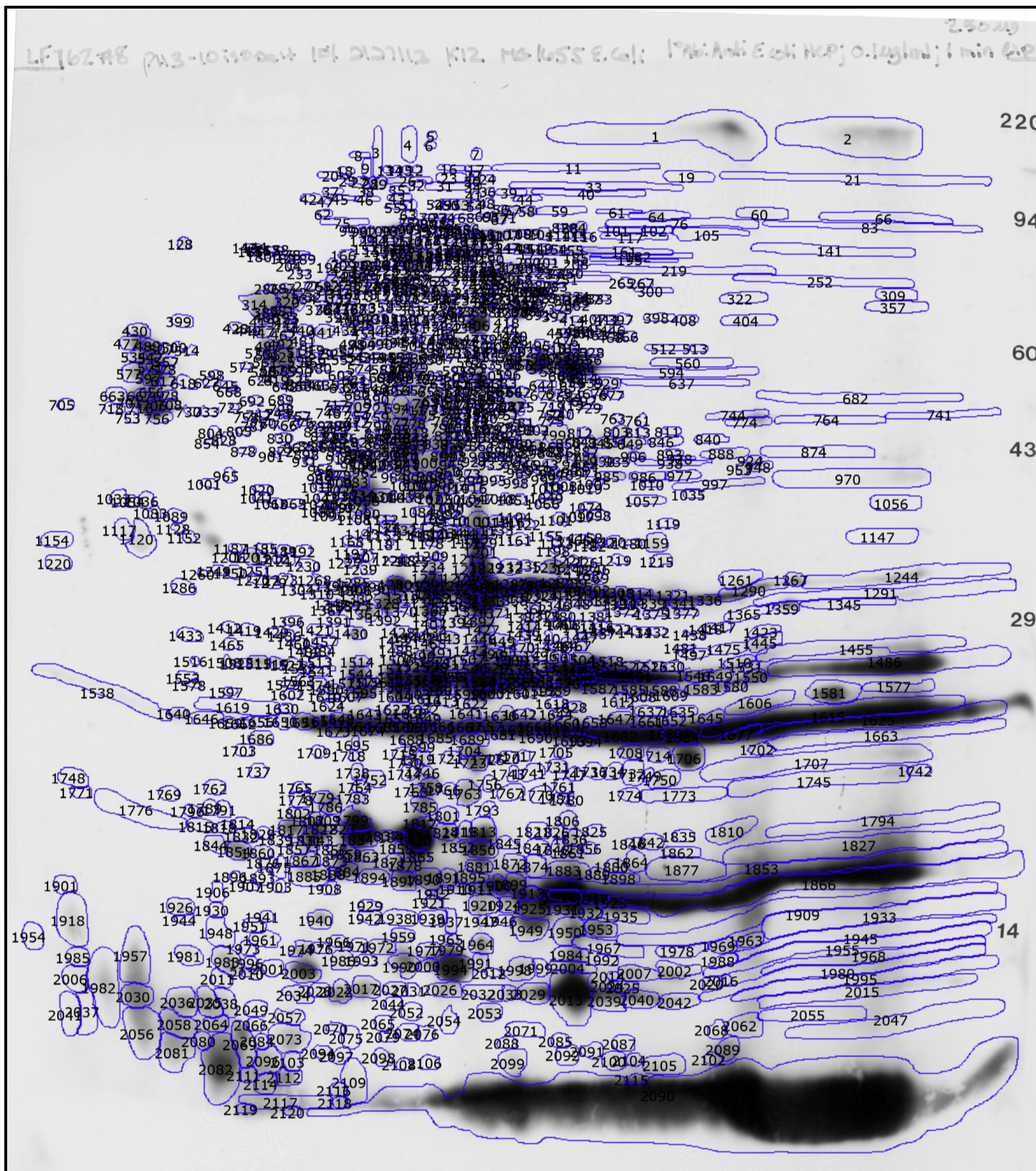


Figure 6. All spot numbering for western blot film image of Cygnus Goat Anti-*E. coli* antibody against K12 MG1655 *E. coli* (LF762 #8, 1-minute exposure). Spot numbers are best viewed on the computer screen. Magnified images to show greater detail will be provided on request. Spot data, including pI and MW can be found in Table 1.

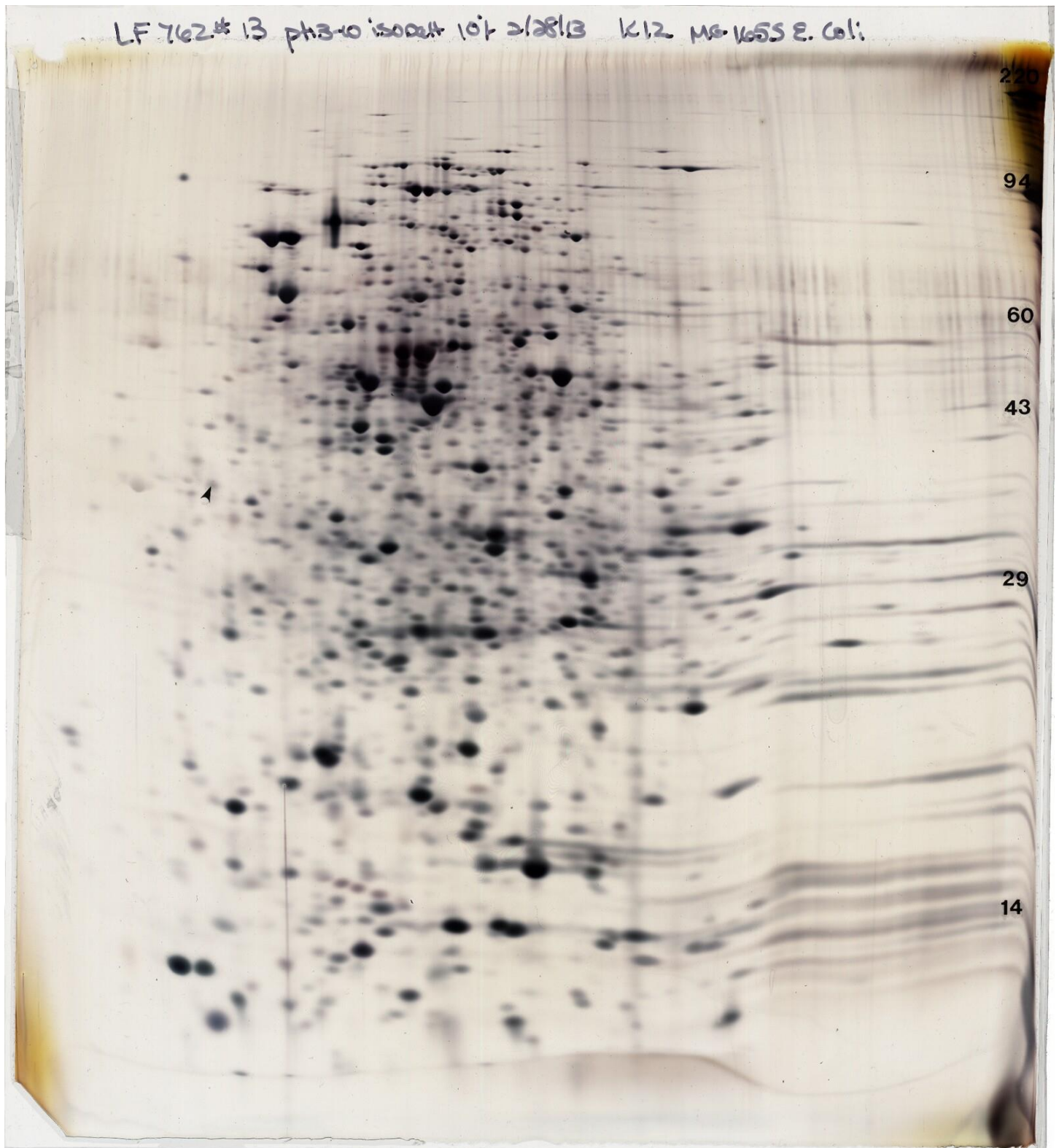


Figure 7. Image of silver-stained gel of K12 MG1655 *E. coli* (LF762 #13). Arrow marks the lower spot of internal standard tropomyosin, pI 5.2, MW 33 kDa.



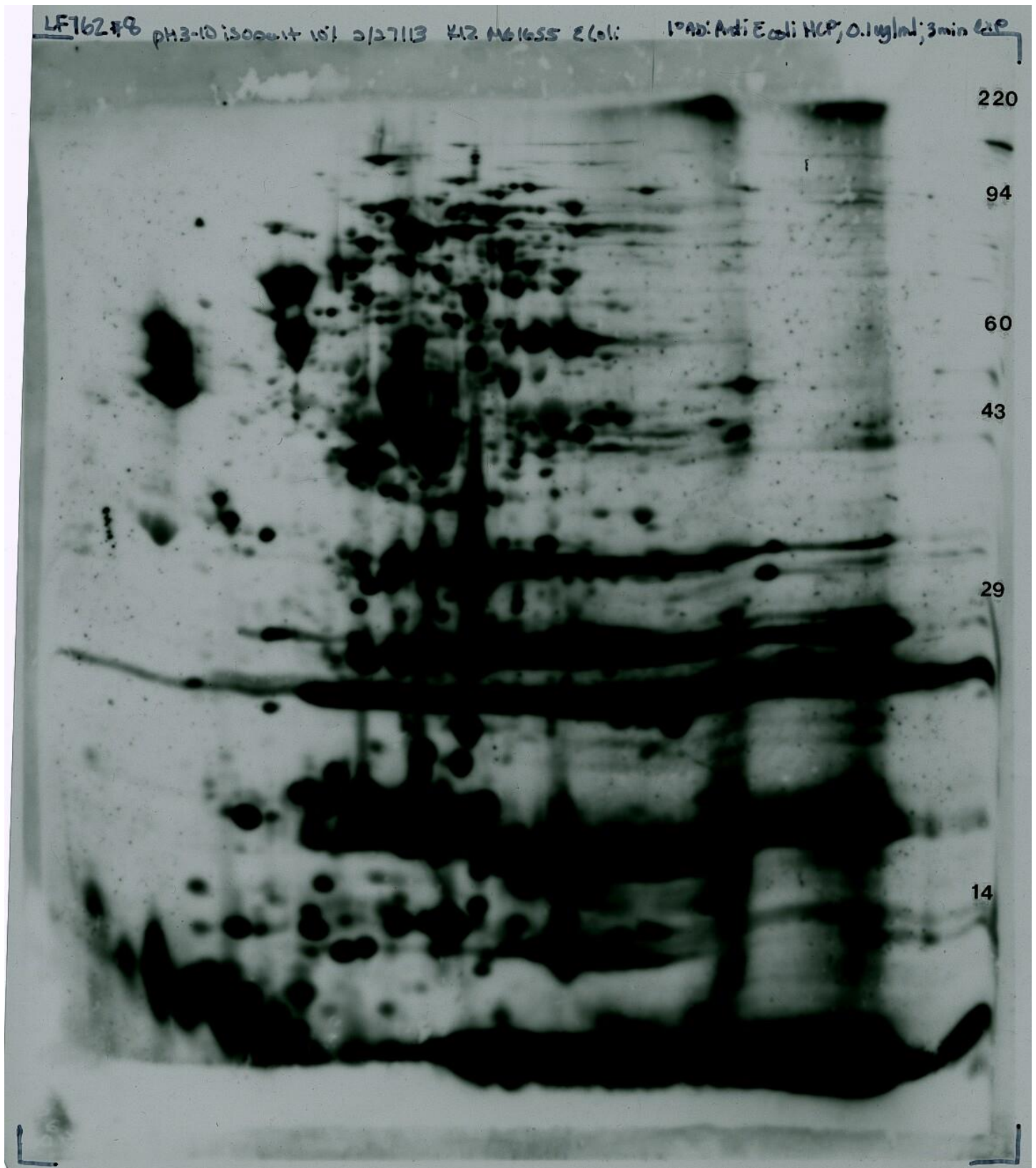


Figure 8. Dark image of western blot film Cygnus Goat Anti-*E. coli* antibody against K12 MG1655 *E. coli* (LF762 #8, 3-minute exposure). Film contrast was adjusted using SpotMap software to distinguish protein spots in dark areas.

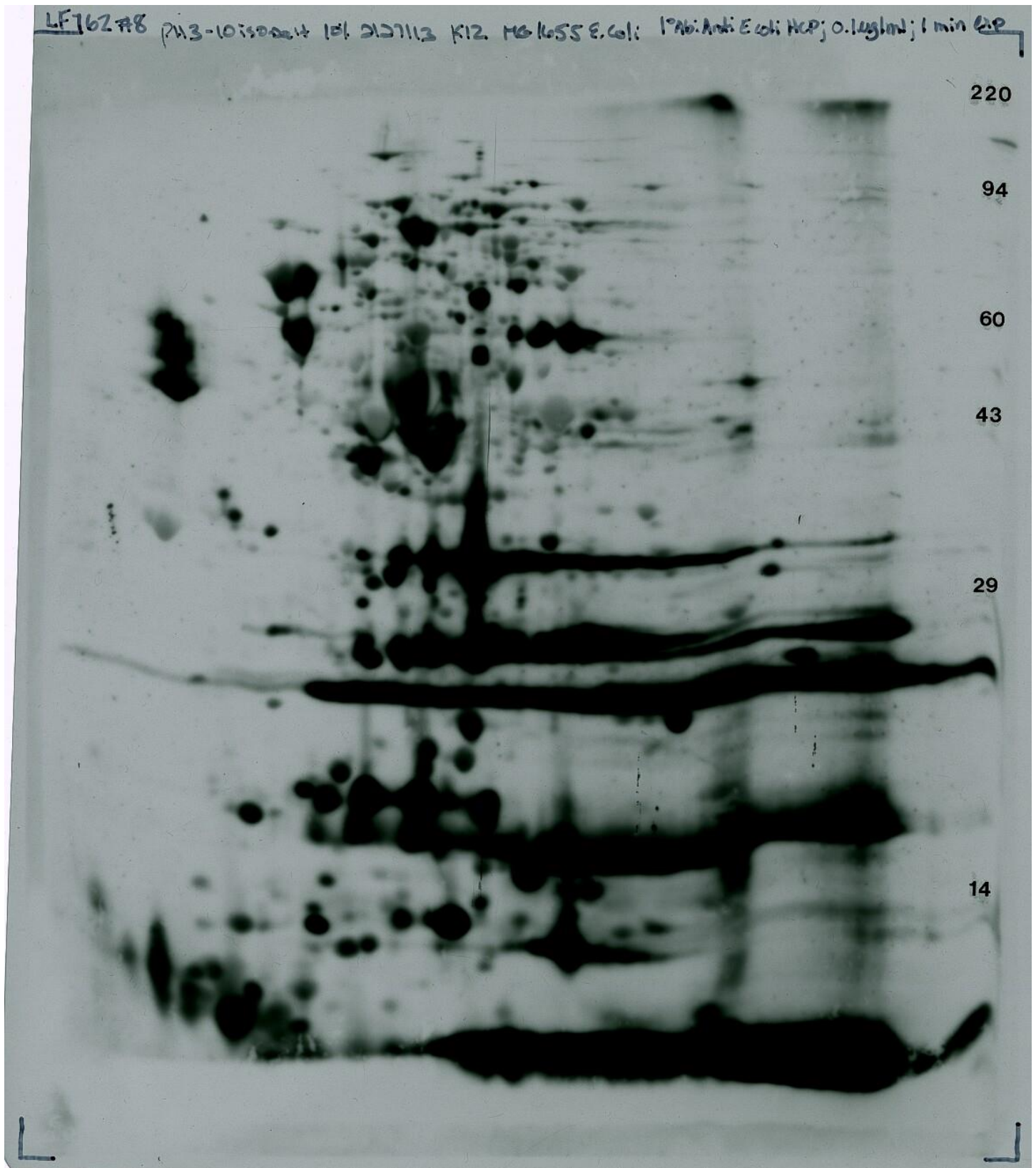


Figure 9. Light image of western blot film Cygnus Goat Anti-*E. coli* antibody against K12 MG1655 *E. coli* (LF762 #8, 1-minute exposure).

Table 1. Summary of protein spot data for 2D gel comparison of K12 MG1655 *E. coli* versus Cygnus Goat Anti-*E. coli* antibody. Reference spot numbering, pI, MW, and spot percentage are given for polypeptide spots analyzed in silver-stained gels of **K12 MG1655 *E. coli*** (LF762 #12-13) and western blot film from **Cygnus Goat Anti-*E. coli* antibody** (LF762 #8, 3-minute exposure). Spot percentages are given to indicate relative abundance. Nd = pI/MW not determined. A total of **2120** spots were analyzed.

Spot #	pI	MW	K12 MG1655 <i>E. coli</i> silver gel LF762 #12 Spot %	K12 MG1655 <i>E. coli</i> silver gel LF762 #13 Spot %	Average K12 MG1655 <i>E. coli</i> silver gels Spot %	Cygnus Goat Anti- <i>E. coli</i> WB of K12 MG1655 <i>E. coli</i> LF762 #8 Spot %
1	7.0	Nd	1.170	1.013	1.091	0.862
2	7.6	Nd	2.154	0.918	1.536	0.814
3	5.9	Nd	-	-	-	0.022
4	6.0	Nd	-	-	-	0.008
5	6.1	Nd	-	-	-	0.001
6	6.1	Nd	-	-	-	0.002
7	6.3	Nd	-	-	-	0.001
8	5.8	Nd	0.005	0.005	0.005	0.002
9	5.8	208,387	-	-	-	0.008
10	7.0	216,485	0.069	0.060	0.064	-
11	6.7	208,387	0.277	0.203	0.240	0.046
12	6.0	206,362	-	-	-	0.002
13	5.9	206,362	-	-	-	0.001
14	6.0	206,362	-	-	-	0.002
15	6.0	205,687	-	-	-	0.002
16	6.2	207,712	0.007	0.015	0.011	0.010
17	6.3	207,037	0.006	0.007	0.007	0.005
18	5.7	205,013	-	-	-	0.001
19	7.1	196,915	0.031	0.041	0.036	0.012
20	5.7	198,264	-	-	-	0.003
21	7.7	193,541	0.339	0.264	0.301	0.124
22	6.3	199,614	-	-	-	0.004
23	6.2	195,565	-	-	-	0.004
24	6.3	194,216	-	-	-	0.001
25	5.8	191,516	-	-	-	0.001
26	6.0	191,516	0.015	0.012	0.014	0.031
27	5.8	190,167	0.006	0.005	0.005	0.017
28	5.8	188,142	0.005	0.007	0.006	0.017
29	5.9	187,467	0.006	0.013	0.009	0.028
30	6.3	192,191	-	-	-	0.011
31	6.2	184,768	-	-	-	0.007
32	6.0	186,118	-	-	-	0.002
33	6.8	183,418	0.236	0.164	0.200	0.046
34	6.3	183,418	-	-	-	0.008
35	6.0	179,369	0.008	0.007	0.007	0.007
36	6.3	177,345	-	-	-	0.001
37	5.7	177,345	0.008	0.006	0.007	0.002
38	5.8	177,345	-	-	-	0.002
39	6.4	175,995	0.015	0.014	0.014	0.006

Spot #	pI	MW	K12 MG1655 <i>E. coli</i> silver gel LF762 #12 Spot %	K12 MG1655 <i>E. coli</i> silver gel LF762 #13 Spot %	Average K12 MG1655 <i>E. coli</i> silver gels Spot %	Cygnus Goat Anti- <i>E. coli</i> WB of K12 MG1655 <i>E. coli</i> LF762 #8 Spot %
40	6.8	174,646	0.112	0.073	0.093	0.020
41	6.3	171,946	-	-	-	0.006
42	5.6	167,898	0.013	0.014	0.013	0.004
43	6.0	168,572	0.016	0.013	0.014	0.016
44	6.5	167,898	0.016	0.013	0.015	0.003
45	5.7	167,898	0.008	0.007	0.008	0.002
46	5.8	166,548	0.008	0.008	0.008	0.002
47	5.7	163,849	-	-	-	0.000
48	6.3	161,824	-	-	-	0.001
49	6.2	159,800	0.006	0.003	0.005	0.004
50	6.2	159,800	0.007	0.005	0.006	0.008
51	6.0	159,800	-	-	-	0.002
52	6.1	160,474	0.007	0.004	0.006	0.002
53	6.2	159,800	0.021	0.014	0.017	0.023
54	6.3	158,450	0.008	0.006	0.007	0.010
55	5.9	156,426	0.009	0.005	0.007	0.002
56	6.4	154,401	0.007	0.004	0.005	0.004
57	6.5	153,051	0.017	0.010	0.013	0.013
58	6.5	151,702	0.025	0.014	0.020	0.032
59	6.7	151,702	0.060	0.040	0.050	0.016
60	7.4	147,653	-	-	-	0.042
61	6.9	149,677	0.023	0.015	0.019	0.007
62	5.7	147,653	0.006	0.006	0.006	0.002
63	6.0	146,978	-	-	-	0.003
64	7.1	144,279	0.059	0.064	0.061	0.051
65	6.4	144,279	0.021	0.023	0.022	0.009
66	7.8	141,580	-	-	-	0.077
67	6.4	140,905	0.042	0.043	0.042	0.021
68	6.3	143,604	0.012	0.015	0.013	0.004
69	6.3	144,954	0.006	0.005	0.005	0.002
70	6.1	143,604	0.004	0.004	0.004	0.002
71	6.4	143,604	0.009	0.006	0.007	0.003
72	6.5	142,254	0.008	0.005	0.006	-
73	6.1	142,929	0.004	0.004	0.004	0.001
74	6.2	142,929	0.007	0.007	0.007	0.002
75	5.7	136,181	0.049	0.029	0.039	0.011
76	7.1	134,831	0.091	0.120	0.105	0.049
77	5.9	136,181	0.018	0.009	0.013	-
78	6.0	136,856	0.007	0.004	0.006	0.011
79	6.1	135,506	0.004	0.003	0.004	0.001
80	6.1	134,831	0.014	0.011	0.013	0.004
81	6.1	134,156	0.035	0.038	0.037	0.008
82	6.2	134,831	0.002	0.001	0.002	0.001
83	7.7	130,108	0.111	0.126	0.119	0.092
84	6.7	130,108	0.070	0.032	0.051	0.026

Spot #	pI	MW	K12 MG1655 <i>E. coli</i> silver gel LF762 #12 Spot %	K12 MG1655 <i>E. coli</i> silver gel LF762 #13 Spot %	Average K12 MG1655 <i>E. coli</i> silver gels Spot %	Cygnus Goat Anti- <i>E. coli</i> WB of K12 MG1655 <i>E. coli</i> LF762 #8 Spot %
85	6.2	126,733	0.015	0.012	0.013	0.018
86	6.3	128,083	0.012	0.010	0.011	0.017
87	6.7	130,108	0.012	0.005	0.009	0.006
88	6.7	129,433	0.017	0.008	0.012	0.002
89	6.0	124,709	0.078	0.085	0.081	0.012
90	6.0	128,083	0.009	0.004	0.007	0.004
91	6.0	128,758	0.009	0.004	0.006	0.001
92	5.8	124,034	0.038	0.033	0.036	0.014
93	5.9	126,059	0.040	0.039	0.040	0.005
94	6.1	128,083	0.014	0.008	0.011	0.001
95	6.2	128,758	0.003	0.002	0.003	0.002
96	5.8	124,709	0.017	0.013	0.015	0.010
97	6.1	126,059	0.048	0.044	0.046	0.001
98	6.2	126,733	0.013	0.008	0.010	0.001
99	5.8	126,059	0.010	0.006	0.008	0.004
100	5.9	125,384	0.026	0.021	0.023	0.016
101	6.9	126,059	0.057	0.038	0.047	0.005
102	7.0	125,384	0.116	0.093	0.105	0.005
103	6.1	124,034	0.110	0.128	0.119	0.002
104	6.6	120,660	0.023	0.010	0.017	0.017
105	7.2	119,985	0.140	0.255	0.198	0.034
106	6.2	122,010	0.038	0.048	0.043	0.019
107	6.4	119,985	0.028	0.017	0.023	0.021
108	6.5	121,335	0.005	0.004	0.005	0.005
109	6.5	122,010	0.009	0.006	0.007	0.005
110	6.3	121,335	0.035	0.037	0.036	0.006
111	6.4	119,310	0.089	0.094	0.091	0.014
112	6.1	120,660	0.003	0.004	0.004	0.001
113	6.3	121,335	0.005	0.004	0.005	0.006
114	6.7	118,636	0.014	0.011	0.013	0.009
115	6.7	119,310	0.006	0.005	0.006	0.010
116	6.8	117,961	0.008	0.005	0.007	0.004
117	7.0	116,611	0.043	0.033	0.038	0.014
118	6.1	113,912	0.009	0.010	0.009	0.002
119	6.3	117,961	0.010	0.007	0.008	0.006
120	6.0	111,213	0.013	0.014	0.013	0.027
121	6.1	113,237	0.006	0.015	0.011	0.002
122	6.2	113,237	0.008	0.007	0.007	0.006
123	6.3	115,261	0.024	0.030	0.027	0.005
124	5.9	112,562	0.029	0.029	0.029	0.012
125	6.0	111,213	0.003	0.008	0.005	0.009
126	6.2	112,562	0.012	0.013	0.012	0.008
127	6.3	111,213	0.027	0.031	0.029	0.010
128	5.0	108,513	0.042	0.046	0.044	0.019
129	5.8	112,562	0.009	0.007	0.008	0.003

Spot #	pI	MW	K12 MG1655 <i>E. coli</i> silver gel LF762 #12 Spot %	K12 MG1655 <i>E. coli</i> silver gel LF762 #13 Spot %	Average K12 MG1655 <i>E. coli</i> silver gels Spot %	Cygnus Goat Anti- <i>E. coli</i> WB of K12 MG1655 <i>E. coli</i> LF762 #8 Spot %
130	6.1	108,513	0.007	0.010	0.009	0.017
131	5.9	112,562	0.004	0.003	0.004	0.002
132	6.3	113,237	0.004	0.003	0.003	0.003
133	6.5	111,213	0.005	0.005	0.005	-
134	5.2	107,838	0.009	0.006	0.008	-
135	6.4	108,513	0.003	0.003	0.003	0.007
136	6.3	107,164	0.003	0.003	0.003	-
137	6.4	107,164	0.003	0.003	0.003	-
138	5.7	104,464	0.006	0.004	0.005	-
139	6.1	104,464	0.005	0.006	0.006	-
140	6.4	104,464	0.003	0.003	0.003	-
141	7.6	99,066	0.102	0.076	0.089	0.056
142	6.1	103,790	0.004	0.009	0.006	-
143	5.3	103,115	0.003	0.003	0.003	0.001
144	5.4	103,790	0.003	0.003	0.003	0.002
145	5.8	103,115	0.011	0.009	0.010	-
146	6.0	103,115	0.017	0.020	0.018	0.003
147	6.4	103,115	0.013	0.011	0.012	0.008
148	6.5	102,440	0.030	0.032	0.031	0.011
149	6.6	102,440	0.011	0.005	0.008	0.003
150	5.9	102,440	0.022	0.020	0.021	0.021
151	6.5	102,440	0.006	0.005	0.005	0.002
152	5.8	101,090	0.016	0.019	0.018	0.001
153	5.9	98,391	0.047	0.055	0.051	0.007
154	6.6	101,090	0.015	0.010	0.013	0.007
155	6.7	99,741	0.031	0.018	0.024	0.015
156	5.4	99,741	0.003	0.004	0.003	0.002
157	5.4	99,741	0.009	0.012	0.010	0.005
158	5.5	100,415	0.003	0.002	0.003	0.001
159	6.2	100,415	0.013	0.014	0.013	0.009
160	6.3	101,090	0.008	0.007	0.007	0.007
161	6.9	98,391	0.108	0.084	0.096	0.083
162	6.2	99,066	0.020	0.026	0.023	0.005
163	6.0	93,797	0.238	0.317	0.278	0.007
164	6.4	97,716	0.012	0.010	0.011	0.012
165	5.4	97,716	-	-	-	0.001
166	5.7	93,797	-	-	-	0.019
167	6.1	93,661	0.176	0.239	0.207	0.011
168	6.1	97,041	0.014	0.017	0.015	0.006
169	6.1	93,661	0.062	0.095	0.079	0.008
170	6.0	96,367	0.011	0.014	0.013	0.003
171	6.0	95,017	0.044	0.058	0.051	0.001
172	6.2	96,367	0.005	0.004	0.004	0.002
173	6.2	96,367	0.016	0.019	0.017	0.001
174	6.3	94,342	0.054	0.065	0.060	0.006

Spot #	pI	MW	K12 MG1655 <i>E. coli</i> silver gel LF762 #12 Spot %	K12 MG1655 <i>E. coli</i> silver gel LF762 #13 Spot %	Average K12 MG1655 <i>E. coli</i> silver gels Spot %	Cygnus Goat Anti- <i>E. coli</i> WB of K12 MG1655 <i>E. coli</i> LF762 #8 Spot %
175	6.5	95,017	0.038	0.022	0.030	0.016
176	5.9	95,017	0.007	0.004	0.005	0.005
177	6.3	95,692	0.012	0.010	0.011	0.004
178	5.5	94,342	0.039	0.037	0.038	0.008
179	5.6	94,342	0.009	0.011	0.010	-
180	5.4	93,525	0.036	0.050	0.043	0.016
181	5.8	93,525	0.006	0.005	0.005	-
182	7.0	93,525	0.051	0.050	0.051	0.042
183	6.2	93,525	0.005	0.004	0.005	0.002
184	6.5	93,389	0.008	0.005	0.006	-
185	6.7	93,116	0.011	0.009	0.010	0.011
186	6.1	93,389	0.009	0.009	0.009	0.002
187	6.3	92,980	0.003	0.006	0.004	-
188	5.5	92,980	0.028	0.027	0.027	0.007
189	5.6	92,844	0.019	0.018	0.019	0.006
190	6.4	92,844	0.005	0.007	0.006	0.004
191	6.2	92,844	0.012	0.014	0.013	0.018
192	6.3	92,844	0.002	0.002	0.002	0.007
193	6.6	93,116	0.004	0.004	0.004	-
194	6.0	92,572	0.007	0.007	0.007	0.011
195	7.0	92,572	0.033	0.024	0.029	0.018
196	5.7	90,667	0.071	0.096	0.084	0.012
197	6.1	92,300	0.002	0.002	0.002	0.009
198	6.1	91,211	0.013	0.011	0.012	0.016
199	6.5	92,028	0.004	0.004	0.004	-
200	6.5	91,892	0.012	0.011	0.011	0.003
201	6.6	91,892	0.018	0.018	0.018	0.007
202	5.9	91,484	0.006	0.003	0.004	0.002
203	6.0	91,348	0.035	0.035	0.035	0.008
204	5.5	90,939	0.003	0.004	0.003	0.001
205	5.8	90,939	0.052	0.068	0.060	0.015
206	6.1	90,803	0.016	0.012	0.014	0.014
207	6.3	91,348	0.004	0.004	0.004	0.003
208	6.7	91,484	0.003	0.003	0.003	0.001
209	5.7	91,075	0.013	0.009	0.011	0.011
210	5.9	91,211	0.010	0.008	0.009	0.006
211	6.0	91,348	0.008	0.006	0.007	0.007
212	6.3	91,075	0.016	0.018	0.017	0.004
213	6.4	90,939	0.059	0.073	0.066	0.009
214	5.6	90,939	0.002	0.003	0.003	-
215	5.8	91,075	0.020	0.018	0.019	0.013
216	6.4	90,259	0.152	0.174	0.163	0.015
217	6.1	90,803	0.006	0.006	0.006	0.010
218	6.5	90,531	0.003	0.003	0.003	0.003
219	7.1	89,851	0.183	0.204	0.193	0.076

Spot #	pI	MW	K12 MG1655 <i>E. coli</i> silver gel LF762 #12 Spot %	K12 MG1655 <i>E. coli</i> silver gel LF762 #13 Spot %	Average K12 MG1655 <i>E. coli</i> silver gels Spot %	Cygnus Goat Anti- <i>E. coli</i> WB of K12 MG1655 <i>E. coli</i> LF762 #8 Spot %
220	6.5	90,259	0.020	0.015	0.017	0.006
221	6.6	90,395	0.007	0.006	0.006	-
222	5.9	89,851	0.005	0.005	0.005	0.002
223	6.0	89,987	0.002	0.002	0.002	0.004
224	5.9	89,987	0.001	0.001	0.001	0.001
225	6.3	89,851	0.004	0.005	0.005	0.002
226	5.8	89,443	0.005	0.003	0.004	0.013
227	6.3	89,715	0.007	0.009	0.008	0.002
228	6.2	89,307	0.003	0.003	0.003	0.000
229	6.6	89,443	0.006	0.008	0.007	0.004
230	6.7	89,170	0.011	0.008	0.009	0.002
231	6.0	89,034	0.003	0.005	0.004	0.009
232	6.4	89,307	0.011	0.013	0.012	0.002
233	5.6	88,898	0.003	0.003	0.003	0.001
234	6.1	88,898	0.003	0.003	0.003	-
235	6.7	89,034	0.014	0.014	0.014	0.006
236	5.9	88,898	0.001	0.003	0.002	-
237	6.6	88,898	0.006	0.005	0.006	0.002
238	6.0	88,762	0.003	0.005	0.004	0.008
239	6.1	88,626	0.002	0.003	0.003	-
240	5.8	88,218	0.009	0.009	0.009	0.002
241	6.3	88,354	0.012	0.008	0.010	0.002
242	6.3	88,354	0.007	0.004	0.006	0.002
243	5.9	88,490	0.001	0.002	0.001	-
244	6.3	88,762	0.009	0.009	0.009	0.001
245	5.7	88,218	0.007	0.006	0.007	0.003
246	6.2	88,354	0.006	0.004	0.005	-
247	6.4	88,490	0.013	0.018	0.016	0.001
248	6.4	87,265	0.129	0.162	0.145	0.018
249	5.8	87,810	0.008	0.009	0.008	0.007
250	6.3	88,082	0.009	0.014	0.012	0.003
251	6.7	87,402	0.054	0.067	0.060	0.023
252	7.5	86,721	0.154	0.126	0.140	0.052
253	5.7	84,544	0.566	0.641	0.604	0.093
254	4.8	87,265	0.004	0.004	0.004	-
255	6.4	87,538	0.046	0.061	0.053	0.008
256	5.9	87,538	0.007	0.005	0.006	0.006
257	6.1	87,402	0.003	0.004	0.003	0.003
258	6.5	87,402	0.020	0.012	0.016	0.002
259	5.8	87,129	0.011	0.013	0.012	0.005
260	7.1	86,857	0.012	0.009	0.011	-
261	6.0	87,129	0.003	0.002	0.002	0.002
262	6.1	87,129	0.006	0.007	0.006	0.002
263	6.2	86,993	0.021	0.025	0.023	0.006
264	6.0	86,721	0.020	0.025	0.022	0.011



Spot #	pI	MW	K12 MG1655 <i>E. coli</i> silver gel LF762 #12 Spot %	K12 MG1655 <i>E. coli</i> silver gel LF762 #13 Spot %	Average K12 MG1655 <i>E. coli</i> silver gels Spot %	Cygnus Goat Anti- <i>E. coli</i> WB of K12 MG1655 <i>E. coli</i> LF762 #8 Spot %
265	6.9	86,313	0.011	0.009	0.010	0.002
266	5.4	86,585	0.005	0.003	0.004	-
267	7.0	86,313	0.008	0.006	0.007	0.003
268	5.6	85,633	0.068	0.082	0.075	0.015
269	5.9	86,449	0.007	0.005	0.006	0.003
270	6.3	86,177	0.009	0.009	0.009	0.004
271	6.4	86,313	0.001	0.002	0.001	-
272	5.8	85,497	0.018	0.016	0.017	0.009
273	6.0	86,177	0.002	0.005	0.004	0.004
274	6.3	86,177	0.003	0.005	0.004	0.001
275	6.4	86,177	0.003	0.003	0.003	0.003
276	5.4	85,905	0.002	0.002	0.002	-
277	5.6	85,497	0.010	0.011	0.010	0.002
278	5.7	85,633	0.067	0.084	0.076	0.009
279	6.5	85,633	0.011	0.012	0.011	0.007
280	6.6	85,769	0.031	0.029	0.030	0.015
281	5.8	84,816	0.084	0.090	0.087	0.029
282	5.9	85,497	0.003	0.006	0.005	0.004
283	6.6	85,497	0.015	0.013	0.014	0.003
284	6.7	85,497	0.002	0.002	0.002	-
285	7.1	85,360	0.004	0.004	0.004	-
286	5.4	84,952	0.009	0.009	0.009	0.012
287	5.5	85,088	0.009	0.010	0.010	0.017
288	6.0	84,816	0.062	0.064	0.063	0.006
289	6.2	85,088	0.009	0.009	0.009	-
290	6.4	85,088	0.007	0.008	0.008	0.003
291	5.9	84,952	0.003	0.003	0.003	0.003
292	6.0	84,544	0.022	0.018	0.020	0.013
293	6.0	84,952	0.010	0.008	0.009	0.005
294	6.2	84,952	0.010	0.008	0.009	-
295	6.3	84,952	0.007	0.008	0.007	-
296	5.3	84,408	0.015	0.013	0.014	-
297	6.1	84,544	0.026	0.026	0.026	0.007
298	6.1	84,272	0.071	0.094	0.082	0.026
299	6.4	84,680	0.008	0.014	0.011	0.012
300	7.0	84,272	0.011	0.012	0.012	0.005
301	5.3	84,272	0.003	0.003	0.003	-
302	6.5	84,272	0.013	0.020	0.016	0.006
303	6.5	84,000	0.031	0.021	0.026	0.004
304	6.5	84,136	0.007	0.007	0.007	0.003
305	6.0	84,000	0.009	0.009	0.009	0.004
306	6.6	84,136	0.006	0.002	0.004	0.003
307	6.6	84,136	0.007	0.003	0.005	0.003
308	6.7	84,136	0.002	0.003	0.003	-
309	7.8	83,047	-	-	-	0.014

Spot #	pI	MW	K12 MG1655 <i>E. coli</i> silver gel LF762 #12 Spot %	K12 MG1655 <i>E. coli</i> silver gel LF762 #13 Spot %	Average K12 MG1655 <i>E. coli</i> silver gels Spot %	Cygnus Goat Anti- <i>E. coli</i> WB of K12 MG1655 <i>E. coli</i> LF762 #8 Spot %
310	6.3	84,000	0.020	0.020	0.020	0.003
311	6.4	84,000	0.003	0.003	0.003	0.001
312	5.5	83,864	0.005	0.005	0.005	0.009
313	5.7	83,728	0.004	0.005	0.004	0.004
314	5.4	80,734	0.564	0.690	0.627	0.308
315	5.8	83,319	-	-	-	0.001
316	6.3	83,728	0.008	0.007	0.007	0.001
317	5.9	82,911	-	-	-	0.001
318	5.9	83,455	0.002	0.002	0.002	-
319	6.2	83,319	0.011	0.021	0.016	0.004
320	5.5	81,278	0.581	0.743	0.662	0.181
321	5.6	82,639	0.033	0.024	0.029	0.007
322	7.3	82,231	-	-	-	0.018
323	6.1	82,639	0.008	0.008	0.008	0.005
324	6.7	82,911	0.009	0.011	0.010	0.003
325	5.8	82,231	-	-	-	0.014
326	6.0	82,231	0.007	0.007	0.007	0.012
327	6.4	82,503	0.007	0.007	0.007	0.002
328	6.6	82,503	0.009	0.007	0.008	0.002
329	6.2	82,503	0.009	0.008	0.008	0.001
330	6.3	82,639	0.003	0.004	0.004	0.002
331	6.6	82,367	0.041	0.042	0.041	0.008
332	6.7	81,823	0.141	0.158	0.149	0.020
333	6.8	82,231	0.007	0.005	0.006	0.001
334	5.6	82,231	0.018	0.014	0.016	0.011
335	5.7	82,367	0.003	0.002	0.002	0.003
336	6.4	82,231	0.011	0.010	0.010	0.006
337	6.8	82,095	0.013	0.009	0.011	0.002
338	7.0	81,687	0.040	0.033	0.036	-
339	5.8	81,959	0.006	0.003	0.005	-
340	6.0	82,095	0.001	0.003	0.002	0.002
341	6.1	82,367	0.016	0.020	0.018	0.009
342	6.2	81,959	0.056	0.078	0.067	0.009
343	6.3	81,823	-	-	-	0.007
344	6.5	81,823	0.034	0.033	0.033	0.005
345	6.5	81,823	0.009	0.006	0.007	0.007
346	6.7	81,823	0.010	0.006	0.008	0.003
347	5.0	80,326	0.005	0.008	0.006	-
348	6.1	81,142	0.007	0.005	0.006	-
349	6.3	81,142	0.028	0.032	0.030	0.004
350	6.4	80,870	0.067	0.083	0.075	-
351	6.3	80,870	0.013	0.013	0.013	-
352	5.2	80,734	0.002	0.002	0.002	-
353	5.7	81,006	0.002	0.002	0.002	-
354	5.3	80,598	0.004	0.003	0.003	-

Spot #	pI	MW	K12 MG1655 <i>E. coli</i> silver gel LF762 #12 Spot %	K12 MG1655 <i>E. coli</i> silver gel LF762 #13 Spot %	Average K12 MG1655 <i>E. coli</i> silver gels Spot %	Cygnus Goat Anti- <i>E. coli</i> WB of K12 MG1655 <i>E. coli</i> LF762 #8 Spot %
355	6.2	80,462	0.034	0.041	0.037	-
356	6.5	80,734	0.002	0.002	0.002	0.003
357	7.8	79,782	-	-	-	0.028
358	5.9	80,054	-	-	-	0.001
359	6.0	80,462	0.005	0.007	0.006	0.005
360	6.2	80,598	0.010	0.007	0.009	0.003
361	6.5	80,598	0.005	0.003	0.004	0.004
362	6.7	80,462	0.011	0.007	0.009	0.009
363	6.0	79,101	-	-	-	0.005
364	5.7	79,237	0.130	0.081	0.105	0.018
365	6.1	78,965	0.021	0.024	0.023	0.008
366	6.3	80,190	0.002	0.004	0.003	0.006
367	6.6	80,054	0.005	0.004	0.005	0.005
368	5.8	79,373	0.112	0.165	0.138	0.013
369	5.9	79,918	0.004	0.003	0.003	-
370	5.6	79,373	0.021	0.012	0.016	0.005
371	5.7	79,645	0.009	0.009	0.009	0.002
372	5.8	79,645	0.017	0.022	0.019	0.002
373	5.8	79,645	0.008	0.014	0.011	0.002
374	6.4	79,782	0.003	0.008	0.005	0.004
375	6.7	79,509	0.010	0.009	0.009	0.021
376	6.4	78,557	0.022	0.019	0.021	0.023
377	6.2	78,693	0.080	0.102	0.091	0.018
378	6.5	78,421	0.072	0.069	0.070	0.025
379	5.2	78,693	0.004	0.003	0.003	-
380	5.3	78,829	0.006	0.004	0.005	-
381	5.5	78,965	0.010	0.026	0.018	0.013
382	6.0	78,965	0.003	0.006	0.004	-
383	6.2	78,965	0.014	0.010	0.012	0.004
384	6.3	78,829	0.012	0.011	0.011	0.012
385	6.5	78,965	0.004	0.003	0.003	0.008
386	6.5	78,965	0.005	0.003	0.004	0.005
387	6.7	78,693	0.011	0.006	0.009	-
388	6.4	78,693	0.005	0.007	0.006	0.003
389	5.4	78,557	0.006	0.004	0.005	0.001
390	6.2	78,013	0.023	0.032	0.027	0.006
391	6.6	78,013	0.010	0.007	0.009	0.005
392	6.6	77,468	0.038	0.032	0.035	0.022
393	5.5	77,332	0.009	0.010	0.010	0.021
394	5.7	77,196	0.004	0.004	0.004	0.002
395	5.9	76,788	0.008	0.007	0.007	0.008
396	6.2	77,332	-	-	-	0.002
397	6.9	76,652	-	-	-	0.002
398	7.1	77,060	0.015	0.017	0.016	0.004
399	5.0	76,108	0.045	0.037	0.041	0.013

Spot #	pI	MW	K12 MG1655 <i>E. coli</i> silver gel LF762 #12 Spot %	K12 MG1655 <i>E. coli</i> silver gel LF762 #13 Spot %	Average K12 MG1655 <i>E. coli</i> silver gels Spot %	Cygnus Goat Anti- <i>E. coli</i> WB of K12 MG1655 <i>E. coli</i> LF762 #8 Spot %
400	5.4	77,332	0.004	0.004	0.004	0.004
401	5.9	76,924	0.010	0.009	0.010	0.006
402	5.8	76,788	0.067	0.093	0.080	0.024
403	6.7	77,196	0.004	0.003	0.004	-
404	7.3	76,244	-	-	-	0.014
405	5.8	76,516	0.021	0.021	0.021	0.013
406	6.3	75,155	0.018	0.015	0.017	0.112
407	6.8	76,788	0.005	0.003	0.004	0.001
408	7.1	76,516	0.008	0.011	0.010	0.003
409	6.0	76,516	-	-	-	0.003
410	6.4	76,516	0.005	0.007	0.006	-
411	6.9	76,652	0.024	0.016	0.020	0.004
412	6.0	76,516	0.006	0.005	0.006	0.002
413	6.2	76,652	0.002	0.002	0.002	0.010
414	6.7	76,516	0.008	0.004	0.006	0.002
415	6.1	76,380	0.027	0.034	0.031	0.011
416	6.2	76,380	0.009	0.007	0.008	-
417	6.1	76,380	0.004	0.008	0.006	0.006
418	6.4	75,836	-	-	-	0.002
419	5.4	75,972	0.010	0.012	0.011	0.021
420	6.5	75,836	0.008	0.005	0.007	-
421	5.3	75,699	0.008	0.006	0.007	-
422	5.5	75,972	0.007	0.005	0.006	0.008
423	6.6	75,291	0.004	0.005	0.004	-
424	5.5	75,699	0.002	0.002	0.002	-
425	6.8	75,291	0.015	0.006	0.010	-
426	5.8	75,155	0.010	0.012	0.011	0.021
427	7.1	75,019	0.014	0.015	0.014	-
428	5.3	74,203	0.026	0.028	0.027	0.010
429	6.1	74,883	0.010	0.011	0.011	0.006
430	4.7	73,522	-	-	-	0.065
431	6.0	74,339	-	-	-	0.003
432	6.2	74,475	0.046	0.045	0.046	0.006
433	5.5	74,611	0.007	0.005	0.006	0.007
434	5.8	73,794	0.011	0.009	0.010	0.018
435	6.3	74,339	0.007	0.005	0.006	0.028
436	6.4	74,203	0.010	0.015	0.012	-
437	6.0	73,931	0.013	0.010	0.011	0.009
438	6.0	74,203	0.007	0.014	0.010	0.006
439	6.8	74,339	0.012	0.011	0.011	-
440	5.6	73,658	0.035	0.034	0.034	0.016
441	5.7	73,250	0.033	0.025	0.029	0.040
442	5.9	73,386	0.104	0.074	0.089	0.024
443	6.1	73,931	0.002	0.011	0.007	-
444	6.4	73,658	-	-	-	0.002

Spot #	pI	MW	K12 MG1655 <i>E. coli</i> silver gel LF762 #12 Spot %	K12 MG1655 <i>E. coli</i> silver gel LF762 #13 Spot %	Average K12 MG1655 <i>E. coli</i> silver gels Spot %	Cygnus Goat Anti- <i>E. coli</i> WB of K12 MG1655 <i>E. coli</i> LF762 #8 Spot %
445	6.8	74,067	0.010	0.005	0.008	0.001
446	6.9	73,794	0.042	0.022	0.032	0.007
447	5.4	73,114	0.108	0.181	0.144	0.044
448	6.5	73,794	0.008	0.005	0.007	-
449	5.4	73,658	0.017	0.019	0.018	0.006
450	6.5	73,658	0.003	0.002	0.003	-
451	5.8	72,842	0.042	0.033	0.037	0.008
452	6.7	73,522	0.007	0.009	0.008	0.001
453	5.8	73,386	0.003	0.004	0.004	-
454	6.6	73,386	0.005	0.005	0.005	-
455	6.6	73,250	0.035	0.016	0.026	-
456	5.0	72,570	0.006	0.008	0.007	-
457	6.7	73,114	0.005	0.005	0.005	0.001
458	6.7	73,114	0.028	0.014	0.021	0.002
459	6.1	72,978	0.004	0.004	0.004	-
460	6.8	72,978	0.006	0.003	0.005	0.001
461	6.2	72,842	0.001	0.002	0.002	0.003
462	5.5	72,570	0.009	0.008	0.008	0.015
463	6.8	72,570	0.014	0.006	0.010	0.002
464	7.0	72,570	0.026	0.019	0.023	-
465	6.2	72,434	0.017	0.015	0.016	-
466	6.9	72,026	0.041	0.028	0.034	0.007
467	6.3	72,162	0.006	0.006	0.006	-
468	6.9	71,889	0.019	0.011	0.015	0.005
469	6.0	72,162	0.002	0.002	0.002	-
470	6.5	72,298	0.004	0.004	0.004	0.001
471	6.0	71,753	-	-	-	0.002
472	5.8	71,889	0.005	0.003	0.004	-
473	6.4	71,753	0.004	0.005	0.004	0.001
474	6.1	70,937	0.038	0.047	0.043	0.008
475	6.3	71,345	0.005	0.005	0.005	0.006
476	6.7	70,937	-	-	-	0.006
477	4.7	70,257	0.017	0.013	0.015	0.095
478	6.2	71,617	0.006	0.005	0.005	0.006
479	6.3	71,345	0.004	0.005	0.005	0.003
480	7.3	71,073	0.006	0.008	0.007	-
481	5.6	70,937	0.005	0.006	0.006	0.003
482	5.7	70,801	0.016	0.008	0.012	-
483	6.5	71,073	0.017	0.011	0.014	0.003
484	6.8	71,209	0.011	0.004	0.007	-
485	6.4	71,073	0.014	0.012	0.013	-
486	7.0	71,073	0.022	0.021	0.021	-
487	6.0	70,801	0.015	0.015	0.015	0.003
488	6.2	70,257	0.093	0.104	0.099	0.029
489	4.8	69,576	0.015	0.010	0.013	0.069

Spot #	pI	MW	K12 MG1655 <i>E. coli</i> silver gel LF762 #12 Spot %	K12 MG1655 <i>E. coli</i> silver gel LF762 #13 Spot %	Average K12 MG1655 <i>E. coli</i> silver gels Spot %	Cygnus Goat Anti- <i>E. coli</i> WB of K12 MG1655 <i>E. coli</i> LF762 #8 Spot %
490	5.9	69,984	0.056	0.049	0.052	0.026
491	6.0	70,529	0.008	0.005	0.007	0.007
492	5.5	69,984	0.034	0.054	0.044	0.036
493	6.1	70,393	0.021	0.016	0.018	0.007
494	6.3	70,257	0.013	0.008	0.010	0.006
495	6.6	69,712	0.057	0.043	0.050	0.021
496	5.0	69,984	0.003	0.006	0.005	-
497	5.4	69,576	0.039	0.041	0.040	0.013
498	5.8	69,984	0.021	0.011	0.016	0.003
499	5.8	69,848	0.045	0.037	0.041	0.008
500	5.0	69,168	-	-	-	0.002
501	6.0	69,712	-	-	-	0.001
502	6.8	69,576	0.019	0.007	0.013	-
503	6.8	69,576	0.007	0.009	0.008	-
504	6.3	69,576	0.009	0.009	0.009	0.004
505	6.5	69,848	0.009	0.008	0.009	0.007
506	6.5	69,440	0.006	0.006	0.006	-
507	4.9	68,624	-	-	-	0.021
508	6.1	69,168	0.031	0.024	0.027	0.006
509	6.4	69,168	0.047	0.047	0.047	0.013
510	6.6	68,624	0.110	0.085	0.098	0.011
511	6.7	69,032	0.010	0.005	0.008	0.009
512	7.1	68,896	0.042	0.038	0.040	0.005
513	7.2	68,760	0.027	0.024	0.025	0.003
514	5.0	68,352	-	-	-	0.002
515	5.6	68,079	0.015	0.013	0.014	0.013
516	6.1	68,896	0.003	0.004	0.003	-
517	6.0	68,488	0.013	0.017	0.015	-
518	6.0	68,624	0.012	0.017	0.015	-
519	5.6	68,488	0.009	0.007	0.008	0.003
520	6.5	68,216	0.023	0.022	0.022	0.014
521	5.5	66,583	0.506	0.588	0.547	0.078
522	5.8	68,079	0.008	0.004	0.006	0.003
523	6.2	67,671	0.091	0.080	0.086	0.010
524	6.3	68,216	0.005	0.006	0.006	0.004
525	5.7	67,535	0.025	0.022	0.023	0.011
526	5.4	67,671	0.020	0.013	0.016	0.023
527	6.5	67,943	0.008	0.006	0.007	0.010
528	6.8	67,807	0.024	0.021	0.022	0.005
529	5.7	67,399	0.017	0.014	0.016	0.006
530	6.1	67,807	0.013	0.008	0.010	0.002
531	6.3	67,671	0.010	0.011	0.011	0.009
532	6.3	67,943	0.008	0.006	0.007	0.001
533	6.7	67,807	0.019	0.012	0.015	0.010
534	4.7	66,583	0.014	0.010	0.012	0.078

Spot #	pI	MW	K12 MG1655 <i>E. coli</i> silver gel LF762 #12 Spot %	K12 MG1655 <i>E. coli</i> silver gel LF762 #13 Spot %	Average K12 MG1655 <i>E. coli</i> silver gels Spot %	Cygnus Goat Anti- <i>E. coli</i> WB of K12 MG1655 <i>E. coli</i> LF762 #8 Spot %
535	5.4	67,127	0.060	0.063	0.062	0.003
536	6.0	66,311	0.250	0.234	0.242	0.021
537	6.4	66,719	0.004	0.009	0.007	0.004
538	6.7	66,583	-	-	-	0.026
539	6.0	66,719	0.066	0.071	0.068	0.009
540	6.6	66,311	0.029	0.037	0.033	0.078
541	6.3	66,583	-	-	-	0.021
542	4.8	66,447	0.004	0.005	0.005	0.016
543	5.8	66,447	0.008	0.008	0.008	0.002
544	5.9	66,583	0.017	0.007	0.012	0.002
545	5.9	66,447	0.011	0.009	0.010	0.003
546	6.4	66,447	0.019	0.016	0.017	0.027
547	6.2	66,311	0.008	0.005	0.007	0.003
548	6.9	66,174	0.035	0.022	0.029	-
549	5.9	66,311	0.020	0.014	0.017	0.002
550	6.1	66,038	0.051	0.046	0.048	0.012
551	6.2	65,494	0.011	0.008	0.010	-
552	5.7	66,038	0.006	0.005	0.005	0.001
553	6.5	64,406	0.133	0.109	0.121	0.080
554	6.7	66,174	0.009	0.008	0.008	0.009
555	6.7	66,038	0.009	0.003	0.006	0.005
556	6.8	65,902	0.025	0.016	0.020	0.008
557	4.9	65,358	0.007	0.005	0.006	0.028
558	5.6	65,494	0.005	0.004	0.004	0.005
559	5.6	65,358	0.006	0.005	0.006	0.001
560	7.1	64,950	0.142	0.125	0.133	0.040
561	5.4	65,222	0.004	0.004	0.004	0.017
562	6.3	65,222	0.014	0.010	0.012	0.009
563	6.3	64,678	0.013	0.011	0.012	0.011
564	5.9	65,222	0.009	0.006	0.007	-
565	6.0	65,086	0.034	0.028	0.031	0.008
566	6.4	64,678	0.031	0.029	0.030	0.024
567	6.5	64,814	0.009	0.009	0.009	0.008
568	6.7	64,814	0.022	0.012	0.017	0.013
569	5.4	64,406	0.002	0.004	0.003	-
570	6.4	63,997	0.007	0.012	0.010	-
571	4.8	63,725	0.009	0.005	0.007	0.010
572	5.3	63,997	0.004	0.004	0.004	0.001
573	6.1	63,725	0.013	0.009	0.011	-
574	5.8	63,453	0.021	0.014	0.017	0.006
575	6.6	63,453	0.057	0.039	0.048	0.042
576	6.7	63,453	0.195	0.182	0.189	0.005
577	4.7	62,092	0.029	0.016	0.022	0.134
578	4.9	63,317	-	-	-	0.024
579	6.0	63,861	0.008	0.014	0.011	0.005

Spot #	pI	MW	K12 MG1655 <i>E. coli</i> silver gel LF762 #12 Spot %	K12 MG1655 <i>E. coli</i> silver gel LF762 #13 Spot %	Average K12 MG1655 <i>E. coli</i> silver gels Spot %	Cygnus Goat Anti- <i>E. coli</i> WB of K12 MG1655 <i>E. coli</i> LF762 #8 Spot %
580	5.6	63,589	0.012	0.012	0.012	0.001
581	6.0	63,725	0.007	0.005	0.006	0.006
582	5.7	63,589	0.014	0.013	0.013	-
583	5.9	63,317	0.045	0.043	0.044	0.007
584	6.8	63,045	0.026	0.018	0.022	0.006
585	5.9	63,045	0.029	0.030	0.030	0.012
586	5.4	62,637	0.004	0.005	0.005	0.005
587	5.5	63,045	0.010	0.010	0.010	0.024
588	5.9	62,909	0.013	0.008	0.010	-
589	5.5	62,909	0.015	0.024	0.019	0.023
590	5.6	62,773	0.009	0.010	0.009	0.007
591	6.2	62,909	0.013	0.015	0.014	0.002
592	6.3	62,773	0.020	0.014	0.017	0.039
593	6.6	62,773	0.018	0.011	0.014	0.030
594	7.1	62,365	0.436	0.267	0.351	0.184
595	6.2	62,909	0.005	0.004	0.004	-
596	6.4	61,956	0.008	0.008	0.008	0.017
597	4.8	60,868	0.016	0.013	0.014	0.030
598	5.2	61,684	0.008	0.004	0.006	0.001
599	6.0	61,820	0.035	0.033	0.034	0.004
600	6.0	61,684	0.020	0.014	0.017	0.004
601	6.4	61,548	0.059	0.053	0.056	0.015
602	5.7	61,684	0.024	0.023	0.024	0.006
603	6.1	61,820	0.005	0.005	0.005	0.001
604	6.2	61,548	0.006	0.007	0.006	-
605	6.2	61,276	0.041	0.046	0.043	0.003
606	6.7	61,548	0.006	0.006	0.006	0.017
607	5.7	61,276	0.014	0.011	0.012	-
608	5.9	61,276	0.006	0.005	0.006	0.006
609	6.5	61,276	0.004	0.006	0.005	-
610	6.7	61,548	0.002	0.003	0.002	0.001
611	5.3	60,596	0.005	0.005	0.005	-
612	6.1	60,868	0.009	0.008	0.008	0.015
613	6.6	61,140	0.004	0.005	0.004	-
614	6.8	61,004	0.038	0.023	0.031	0.026
615	5.9	60,868	0.005	0.005	0.005	-
616	5.9	61,004	-	-	-	0.004
617	4.9	60,187	-	-	-	0.046
618	5.0	59,742	-	-	-	0.012
619	5.5	60,460	0.115	0.165	0.140	0.045
620	5.5	60,596	0.009	0.008	0.008	-
621	5.8	60,460	0.033	0.029	0.031	0.006
622	6.3	61,004	0.003	0.002	0.003	0.019
623	6.1	60,596	0.005	0.005	0.005	0.001
624	5.4	60,460	0.016	0.012	0.014	0.004



Spot #	pI	MW	K12 MG1655 <i>E. coli</i> silver gel LF762 #12 Spot %	K12 MG1655 <i>E. coli</i> silver gel LF762 #13 Spot %	Average K12 MG1655 <i>E. coli</i> silver gels Spot %	Cygnus Goat Anti- <i>E. coli</i> WB of K12 MG1655 <i>E. coli</i> LF762 #8 Spot %
625	5.6	60,323	0.007	0.006	0.006	0.003
626	6.0	60,187	0.010	0.014	0.012	0.010
627	5.2	59,841	0.013	0.007	0.010	0.003
628	6.1	60,323	0.007	0.005	0.006	-
629	6.9	59,644	0.070	0.070	0.070	0.023
630	6.2	59,742	0.079	0.058	0.068	0.005
631	5.8	59,841	-	-	-	0.004
632	5.7	58,858	0.223	0.246	0.234	0.023
633	6.4	59,742	0.034	0.036	0.035	0.007
634	6.7	59,939	0.011	0.006	0.009	0.029
635	5.7	59,349	0.050	0.047	0.049	0.007
636	6.3	59,644	0.016	0.010	0.013	0.016
637	7.1	59,644	0.140	0.103	0.122	0.037
638	6.5	59,644	0.015	0.009	0.012	-
639	6.8	59,841	0.013	0.003	0.008	0.005
640	5.6	59,349	0.010	0.014	0.012	0.003
641	6.2	59,447	0.101	0.096	0.098	0.006
642	6.3	59,251	0.008	0.006	0.007	0.014
643	6.4	59,349	0.050	0.047	0.049	0.008
644	6.6	59,349	0.085	0.096	0.090	0.009
645	5.3	59,251	0.011	0.011	0.011	0.005
646	5.9	58,760	0.095	0.105	0.100	0.014
647	6.7	59,251	0.004	0.008	0.006	-
648	5.5	59,054	0.028	0.018	0.023	0.020
649	5.3	58,858	0.010	0.008	0.009	-
650	5.6	59,153	0.005	0.004	0.004	0.001
651	5.8	58,956	0.042	0.033	0.038	0.004
652	6.7	59,054	0.009	0.005	0.007	0.006
653	6.8	58,956	0.018	0.013	0.015	-
654	6.0	58,366	0.096	0.115	0.105	0.028
655	5.4	58,563	0.027	0.038	0.033	-
656	4.8	57,973	-	-	-	0.018
657	6.0	58,366	0.021	0.020	0.021	0.007
658	6.1	58,072	0.027	0.024	0.025	0.006
659	6.3	58,366	0.012	0.009	0.011	0.005
660	5.9	58,170	0.015	0.017	0.016	0.007
661	6.4	58,170	0.054	0.052	0.053	0.009
662	6.5	57,973	0.096	0.102	0.099	0.012
663	4.6	57,187	0.016	0.009	0.012	0.040
664	6.4	58,170	0.017	0.015	0.016	0.004
665	5.7	57,973	0.025	0.030	0.027	-
666	6.7	58,072	0.007	0.004	0.005	-
667	4.8	57,285	0.016	0.012	0.014	0.029
668	5.3	58,072	0.004	0.004	0.004	0.001
669	5.6	57,777	0.040	0.043	0.042	-

Spot #	pI	MW	K12 MG1655 <i>E. coli</i> silver gel LF762 #12 Spot %	K12 MG1655 <i>E. coli</i> silver gel LF762 #13 Spot %	Average K12 MG1655 <i>E. coli</i> silver gels Spot %	Cygnus Goat Anti- <i>E. coli</i> WB of K12 MG1655 <i>E. coli</i> LF762 #8 Spot %
670	6.2	58,072	0.007	0.005	0.006	0.004
671	6.5	57,973	0.017	0.013	0.015	-
672	6.6	57,384	0.213	0.247	0.230	0.023
673	5.5	57,875	0.011	0.010	0.010	-
674	6.2	57,580	0.039	0.028	0.034	0.019
675	6.7	57,777	0.011	0.007	0.009	0.001
676	6.8	57,777	0.015	0.014	0.014	0.003
677	6.9	57,384	0.027	0.018	0.022	0.006
678	4.9	57,285	-	-	-	0.037
679	6.3	57,285	0.019	0.012	0.015	0.005
680	5.8	57,482	0.012	0.010	0.011	0.007
681	6.8	57,482	0.024	0.013	0.019	-
682	7.7	56,794	0.566	0.466	0.516	0.070
683	7.3	56,991	0.036	0.037	0.037	-
684	6.7	57,089	0.020	0.010	0.015	0.004
685	6.4	57,285	0.009	0.008	0.008	0.003
686	6.2	56,892	0.013	0.018	0.016	0.012
687	6.5	55,320	0.283	0.287	0.285	0.094
688	6.3	56,794	0.022	0.016	0.019	0.003
689	5.5	56,499	0.007	0.005	0.006	0.004
690	5.9	56,598	0.020	0.018	0.019	0.019
691	5.3	56,598	0.011	0.008	0.010	-
692	5.4	56,303	0.036	0.044	0.040	0.008
693	5.6	56,106	0.006	0.011	0.008	-
694	6.0	54,927	0.588	0.558	0.573	0.058
695	6.1	56,303	0.025	0.031	0.028	0.005
696	6.7	56,303	0.011	0.007	0.009	-
697	6.8	56,303	0.035	0.025	0.030	0.004
698	5.4	56,303	0.006	0.006	0.006	-
699	6.4	56,401	0.016	0.012	0.014	0.005
700	7.3	56,303	0.012	0.013	0.013	-
701	4.7	55,910	0.009	0.004	0.007	0.017
702	5.1	55,811	0.002	0.004	0.003	-
703	6.2	55,615	0.200	0.236	0.218	0.013
704	6.5	56,106	0.015	0.013	0.014	-
705	4.3	55,516	-	-	-	0.004
706	4.8	55,418	0.027	0.026	0.027	0.005
707	6.1	55,811	0.070	0.068	0.069	0.015
708	4.9	55,516	0.006	0.005	0.006	0.045
709	5.8	55,222	0.063	0.046	0.054	0.044
710	5.2	55,516	0.010	0.008	0.009	-
711	6.0	54,534	0.375	0.364	0.370	0.035
712	6.3	55,811	0.008	0.005	0.006	0.001
713	6.7	55,516	-	-	-	0.002
714	6.2	55,418	0.118	0.131	0.125	0.022

Spot #	pI	MW	K12 MG1655 <i>E. coli</i> silver gel LF762 #12 Spot %	K12 MG1655 <i>E. coli</i> silver gel LF762 #13 Spot %	Average K12 MG1655 <i>E. coli</i> silver gels Spot %	Cygnus Goat Anti- <i>E. coli</i> WB of K12 MG1655 <i>E. coli</i> LF762 #8 Spot %
715	6.3	55,615	0.022	0.015	0.019	0.002
716	4.8	54,927	0.016	0.012	0.014	0.047
717	5.7	55,516	0.016	0.012	0.014	0.013
718	4.6	54,829	-	-	-	0.007
719	6.6	55,123	0.017	0.008	0.013	0.003
720	5.6	55,222	0.004	0.003	0.004	-
721	5.9	54,829	0.136	0.094	0.115	0.040
722	5.3	55,025	0.003	0.002	0.002	0.001
723	6.3	54,927	0.011	0.008	0.009	0.004
724	6.4	55,025	0.036	0.025	0.031	0.012
725	6.5	55,222	0.006	0.004	0.005	0.006
726	6.4	55,025	0.014	0.010	0.012	0.003
727	5.4	54,829	0.006	0.003	0.004	-
728	5.5	54,730	0.015	0.013	0.014	0.008
729	6.8	54,927	0.029	0.019	0.024	0.002
730	5.1	54,239	-	-	-	0.004
731	6.1	54,632	0.028	0.021	0.024	0.004
732	6.9	54,632	0.015	0.013	0.014	-
733	5.2	54,239	-	-	-	0.002
734	5.6	54,337	0.009	0.009	0.009	-
735	6.1	53,649	0.261	0.254	0.257	0.043
736	6.7	54,632	0.006	0.006	0.006	-
737	5.7	54,435	0.014	0.010	0.012	0.008
738	6.2	54,435	0.023	0.017	0.020	0.004
739	6.3	53,846	-	-	-	0.004
740	6.7	53,748	-	-	-	0.002
741	7.9	53,649	0.070	0.105	0.087	0.025
742	5.4	53,649	0.012	0.008	0.010	0.002
743	5.5	53,846	0.015	0.013	0.014	0.005
744	7.3	53,453	0.111	0.081	0.096	0.088
745	5.3	53,649	0.004	0.003	0.004	-
746	5.7	53,944	-	-	-	0.001
747	6.2	54,141	0.009	0.012	0.010	0.011
748	6.8	53,944	0.035	0.021	0.028	-
749	6.4	53,846	0.021	0.021	0.021	0.002
750	6.3	53,748	-	-	-	0.002
751	6.4	53,649	0.018	0.014	0.016	0.014
752	6.6	53,649	0.030	0.014	0.022	0.004
753	4.7	52,961	-	-	-	0.007
754	5.8	53,354	0.013	0.013	0.013	0.010
755	6.1	53,551	0.013	0.008	0.011	-
756	4.9	52,863	0.007	0.005	0.006	0.083
757	5.6	53,354	0.010	0.011	0.010	0.004
758	5.3	53,060	0.004	0.003	0.004	0.002
759	5.9	53,060	0.034	0.034	0.034	0.040

Spot #	pI	MW	K12 MG1655 <i>E. coli</i> silver gel LF762 #12 Spot %	K12 MG1655 <i>E. coli</i> silver gel LF762 #13 Spot %	Average K12 MG1655 <i>E. coli</i> silver gels Spot %	Cygnus Goat Anti- <i>E. coli</i> WB of K12 MG1655 <i>E. coli</i> LF762 #8 Spot %
760	6.3	52,961	-	-	-	0.003
761	7.0	52,470	0.019	0.010	0.014	0.004
762	6.2	53,060	0.011	0.018	0.015	0.015
763	6.9	52,863	-	-	-	0.002
764	7.6	52,568	0.089	0.072	0.080	0.033
765	5.7	52,765	0.015	0.008	0.012	-
766	5.5	51,684	0.133	0.124	0.129	0.033
767	5.7	52,667	0.017	0.010	0.013	-
768	6.2	52,372	0.036	0.026	0.031	0.009
769	6.4	52,667	0.014	0.010	0.012	-
770	7.0	52,273	0.043	0.037	0.040	-
771	6.3	52,568	0.010	0.006	0.008	0.003
772	5.8	52,077	0.030	0.023	0.026	0.005
773	6.1	52,470	0.012	0.012	0.012	-
774	7.3	52,077	0.162	0.104	0.133	0.086
775	6.6	52,372	0.044	0.027	0.036	0.005
776	5.6	52,077	0.015	0.013	0.014	0.003
777	6.0	52,077	0.089	0.156	0.122	0.006
778	6.0	51,880	0.102	0.152	0.127	0.010
779	6.9	51,880	0.021	0.016	0.018	-
780	5.4	51,979	0.006	0.005	0.005	0.003
781	6.5	52,077	0.044	0.031	0.037	0.003
782	7.8	51,192	0.199	0.218	0.208	-
783	6.2	52,077	0.005	0.007	0.006	0.005
784	6.4	51,880	0.027	0.027	0.027	-
785	5.3	51,782	0.006	0.006	0.006	-
786	6.8	51,586	0.032	0.021	0.026	-
787	5.4	51,389	0.010	0.011	0.010	0.004
788	6.3	51,684	0.005	0.004	0.005	0.005
789	5.7	51,487	0.071	0.058	0.064	0.006
790	5.9	51,389	0.019	0.022	0.020	0.025
791	5.8	51,487	0.018	0.022	0.020	0.002
792	6.4	51,291	0.025	0.019	0.022	0.005
793	7.2	51,192	0.026	0.030	0.028	-
794	5.7	51,487	0.022	0.018	0.020	0.004
795	6.1	51,291	0.010	0.013	0.012	-
796	6.2	50,996	0.016	0.011	0.014	0.015
797	6.4	50,898	0.039	0.026	0.033	0.004
798	6.5	50,603	0.225	0.182	0.203	0.013
799	6.6	49,718	0.865	0.830	0.847	0.036
800	6.2	50,996	0.011	0.013	0.012	0.005
801	5.6	50,799	0.013	0.006	0.009	-
802	6.6	50,701	0.079	0.065	0.072	0.007
803	6.9	50,308	0.071	0.038	0.054	0.026
804	5.2	50,111	0.005	0.004	0.005	0.003

Spot #	pI	MW	K12 MG1655 <i>E. coli</i> silver gel LF762 #12 Spot %	K12 MG1655 <i>E. coli</i> silver gel LF762 #13 Spot %	Average K12 MG1655 <i>E. coli</i> silver gels Spot %	Cygnus Goat Anti- <i>E. coli</i> WB of K12 MG1655 <i>E. coli</i> LF762 #8 Spot %
805	5.3	50,406	0.011	0.012	0.012	0.003
806	5.4	50,505	0.004	0.006	0.005	-
807	6.0	50,799	0.010	0.021	0.015	0.001
808	6.3	50,603	0.018	0.017	0.017	0.004
809	5.8	50,013	0.230	0.240	0.235	-
810	6.3	50,603	0.008	0.005	0.006	0.003
811	7.1	50,308	0.052	0.044	0.048	0.007
812	6.7	50,013	0.102	0.060	0.081	0.005
813	7.0	50,210	0.024	0.011	0.017	0.004
814	4.9	50,210	0.005	0.003	0.004	-
815	5.7	50,406	0.075	0.060	0.068	0.011
816	6.7	50,111	0.018	0.016	0.017	-
817	5.6	50,308	0.013	0.011	0.012	0.005
818	6.0	50,210	0.035	0.059	0.047	0.019
819	6.8	50,111	0.024	0.010	0.017	-
820	5.9	50,111	0.017	0.013	0.015	0.009
821	7.3	49,915	0.003	0.009	0.006	-
822	6.0	50,111	0.009	0.028	0.018	0.001
823	6.2	49,620	0.012	0.011	0.011	0.012
824	6.3	49,620	0.022	0.015	0.018	0.007
825	6.4	49,522	0.029	0.029	0.029	0.011
826	5.8	48,343	0.559	0.587	0.573	0.037
827	6.2	49,522	0.010	0.007	0.008	0.014
828	5.3	48,736	0.018	0.020	0.019	0.007
829	6.4	49,325	0.004	0.004	0.004	0.002
830	5.5	49,030	0.043	0.033	0.038	0.020
831	5.6	49,227	0.017	0.009	0.013	-
832	5.7	49,424	0.034	0.025	0.029	0.003
833	6.3	49,227	0.011	0.005	0.008	0.010
834	6.5	49,227	0.027	0.023	0.025	-
835	5.7	49,227	0.011	0.014	0.012	0.002
836	5.7	49,129	0.044	0.048	0.046	0.004
837	6.0	49,227	0.021	0.017	0.019	0.003
838	5.9	49,227	0.028	0.042	0.035	0.009
839	6.1	47,949	0.461	0.433	0.447	0.048
840	7.2	48,834	0.078	0.067	0.073	0.010
841	5.4	48,834	0.007	0.006	0.007	-
842	5.9	49,030	0.010	0.019	0.014	0.007
843	6.8	48,343	0.045	0.024	0.034	0.012
844	6.0	48,932	0.039	0.032	0.035	0.008
845	6.8	48,146	0.232	0.208	0.220	0.047
846	7.1	48,343	0.079	0.049	0.064	0.014
847	6.4	48,637	0.008	0.005	0.007	0.002
848	5.3	48,146	0.008	0.004	0.006	-
849	7.0	47,949	0.285	0.109	0.197	0.039

Spot #	pI	MW	K12 MG1655 <i>E. coli</i> silver gel LF762 #12 Spot %	K12 MG1655 <i>E. coli</i> silver gel LF762 #13 Spot %	Average K12 MG1655 <i>E. coli</i> silver gels Spot %	Cygnus Goat Anti- <i>E. coli</i> WB of K12 MG1655 <i>E. coli</i> LF762 #8 Spot %
850	6.7	48,048	0.017	0.010	0.014	0.016
851	6.9	48,343	0.010	0.008	0.009	0.002
852	6.0	48,146	0.100	0.129	0.115	0.018
853	6.4	48,343	0.009	0.005	0.007	-
854	5.2	48,048	-	-	-	0.001
855	5.7	47,949	0.011	0.008	0.009	0.003
856	6.2	47,949	0.059	0.061	0.060	0.012
857	6.3	47,655	0.031	0.020	0.025	0.016
858	6.4	47,949	-	-	-	0.003
859	5.6	47,655	-	-	-	0.003
860	6.5	47,949	0.030	0.029	0.029	0.011
861	6.5	47,556	0.040	0.034	0.037	0.018
862	5.9	47,949	0.011	0.011	0.011	0.001
863	6.0	47,753	0.115	0.097	0.106	0.015
864	6.3	47,556	0.015	0.011	0.013	0.011
865	5.8	47,458	0.081	0.086	0.083	0.012
866	5.7	47,360	0.021	0.017	0.019	0.009
867	5.5	47,262	0.010	0.008	0.009	0.004
868	6.6	47,360	0.024	0.011	0.017	0.001
869	4.5	46,672	0.006	0.004	0.005	-
870	5.2	46,574	0.045	0.034	0.039	-
871	5.4	46,672	0.012	0.008	0.010	-
872	5.5	46,574	0.021	0.013	0.017	0.002
873	7.0	46,868	0.030	0.022	0.026	-
874	7.5	46,377	-	-	-	0.046
875	5.1	46,770	0.007	0.005	0.006	-
876	5.9	46,967	0.065	0.068	0.067	0.009
877	6.0	46,868	0.084	0.041	0.062	0.009
878	5.3	46,574	0.007	0.006	0.006	0.002
879	5.7	46,574	0.016	0.012	0.014	0.014
880	6.4	46,574	0.017	0.010	0.013	0.003
881	6.2	46,770	0.014	0.011	0.012	0.004
882	6.6	46,475	0.061	0.032	0.046	0.009
883	6.7	46,574	0.033	0.017	0.025	-
884	6.0	46,574	0.011	0.016	0.014	0.002
885	6.5	46,672	0.039	0.025	0.032	0.003
886	6.7	46,377	0.008	0.008	0.008	0.003
887	6.8	46,475	0.021	0.014	0.018	0.013
888	7.2	46,082	0.116	0.097	0.107	0.057
889	5.3	45,984	0.007	0.005	0.006	-
890	6.5	46,181	0.046	0.037	0.042	-
891	6.9	46,082	0.023	0.011	0.017	-
892	4.6	45,689	0.021	0.017	0.019	-
893	7.1	45,886	0.015	0.021	0.018	0.007
894	5.8	45,591	-	-	-	0.014

Spot #	pI	MW	K12 MG1655 <i>E. coli</i> silver gel LF762 #12 Spot %	K12 MG1655 <i>E. coli</i> silver gel LF762 #13 Spot %	Average K12 MG1655 <i>E. coli</i> silver gels Spot %	Cygnus Goat Anti- <i>E. coli</i> WB of K12 MG1655 <i>E. coli</i> LF762 #8 Spot %
895	6.4	45,689	0.046	0.020	0.033	0.007
896	6.5	46,181	0.007	0.002	0.005	0.003
897	6.9	45,787	0.014	0.017	0.015	-
898	5.6	45,886	0.040	0.032	0.036	0.008
899	6.2	45,591	0.120	0.096	0.108	0.010
900	6.1	44,313	0.955	0.967	0.961	0.029
901	5.4	45,591	-	-	-	0.001
902	5.8	45,984	0.015	0.025	0.020	0.002
903	5.9	45,886	0.016	0.024	0.020	0.004
904	6.0	45,787	0.026	0.043	0.034	0.013
905	6.3	45,591	0.009	0.006	0.008	0.007
906	7.0	45,591	0.039	0.018	0.029	0.009
907	5.8	45,787	0.010	0.008	0.009	0.000
908	6.2	45,591	0.034	0.020	0.027	0.011
909	6.3	45,591	0.011	0.007	0.009	-
910	6.0	45,394	0.042	0.040	0.041	0.002
911	6.4	45,591	0.017	0.011	0.014	0.002
912	6.5	45,493	0.020	0.008	0.014	-
913	6.6	45,198	0.046	0.019	0.032	-
914	5.5	45,296	0.009	0.004	0.007	-
915	5.6	45,001	0.079	0.050	0.065	-
916	5.7	45,001	0.102	0.080	0.091	0.029
917	6.7	45,296	0.018	0.009	0.014	0.006
918	8.0	44,510	0.019	0.082	0.051	-
919	5.5	45,001	0.008	0.006	0.007	-
920	6.7	45,198	0.012	0.007	0.009	-
921	6.8	44,903	0.136	0.134	0.135	0.013
922	5.3	45,001	0.005	0.003	0.004	-
923	5.9	43,822	-	-	-	0.029
924	7.3	44,706	0.014	0.012	0.013	0.017
925	5.4	44,412	0.007	0.006	0.006	-
926	5.8	45,198	0.005	0.017	0.011	0.002
927	6.3	44,608	0.020	0.012	0.016	0.006
928	7.1	45,100	0.028	0.019	0.023	0.006
929	5.4	44,313	0.007	0.006	0.007	-
930	6.8	44,510	0.047	0.033	0.040	0.010
931	5.6	44,510	0.016	0.010	0.013	0.004
932	6.5	44,706	0.012	0.009	0.011	0.004
933	6.4	43,920	0.138	0.102	0.120	0.022
934	5.3	44,117	0.007	0.006	0.006	-
935	6.9	44,510	0.026	0.012	0.019	0.006
936	5.8	44,117	0.012	0.021	0.016	0.005
937	6.0	44,019	0.033	0.029	0.031	0.041
938	7.1	44,215	0.286	0.099	0.192	0.045
939	5.5	44,019	0.010	0.009	0.009	-

Spot #	pI	MW	K12 MG1655 <i>E. coli</i> silver gel LF762 #12 Spot %	K12 MG1655 <i>E. coli</i> silver gel LF762 #13 Spot %	Average K12 MG1655 <i>E. coli</i> silver gels Spot %	Cygnus Goat Anti- <i>E. coli</i> WB of K12 MG1655 <i>E. coli</i> LF762 #8 Spot %
940	5.9	43,920	0.010	0.009	0.010	0.010
941	6.0	44,117	-	-	-	0.005
942	6.3	43,920	0.029	0.020	0.024	-
943	6.6	44,019	0.080	0.047	0.063	0.010
944	6.7	43,822	0.006	0.008	0.007	-
945	6.2	43,920	0.031	0.017	0.024	0.018
946	6.5	43,920	0.023	0.018	0.020	0.008
947	6.7	43,920	0.028	0.016	0.022	0.006
948	7.4	43,527	0.050	0.038	0.044	0.048
949	5.3	43,527	0.004	0.003	0.003	-
950	5.8	43,625	0.048	0.042	0.045	0.015
951	6.5	43,527	0.042	0.030	0.036	0.008
952	5.7	43,527	0.036	0.028	0.032	-
953	7.3	43,036	0.095	0.081	0.088	0.023
954	6.8	43,625	0.012	0.008	0.010	0.008
955	7.2	43,331	0.013	0.008	0.011	-
956	5.6	43,036	0.020	0.015	0.018	0.006
957	7.2	42,805	0.051	0.066	0.058	-
958	5.5	42,805	0.009	0.010	0.010	-
959	6.6	42,931	0.125	0.096	0.111	0.024
960	6.2	42,847	0.073	0.055	0.064	0.031
961	6.7	42,847	0.071	0.047	0.059	0.008
962	5.8	42,805	-	-	-	0.007
963	6.0	42,931	0.011	0.006	0.008	0.003
964	6.6	42,636	0.025	0.020	0.023	0.011
965	5.3	42,468	0.034	0.029	0.032	0.002
966	5.2	42,636	0.007	0.006	0.006	-
967	6.4	42,805	0.010	0.011	0.010	-
968	5.4	42,678	0.004	0.003	0.004	-
969	6.5	42,720	0.063	0.040	0.052	0.016
970	7.6	42,215	-	-	-	0.241
971	6.8	42,636	0.021	0.006	0.014	0.006
972	5.7	42,594	-	-	-	0.007
973	6.3	42,636	0.020	0.017	0.019	0.011
974	4.6	42,468	0.005	0.003	0.004	-
975	5.4	42,468	0.007	0.006	0.007	-
976	6.7	42,552	0.037	0.027	0.032	0.008
977	7.1	42,468	0.050	0.040	0.045	0.020
978	5.7	42,510	0.028	0.022	0.025	0.021
979	5.3	42,468	0.005	0.007	0.006	-
980	6.1	42,468	0.017	0.030	0.024	0.002
981	4.7	42,341	0.006	0.005	0.006	-
982	5.1	42,425	0.003	0.002	0.003	-
983	5.8	41,962	0.414	0.424	0.419	0.084
984	6.0	42,383	0.043	0.038	0.040	0.035



Spot #	pI	MW	K12 MG1655 <i>E. coli</i> silver gel LF762 #12 Spot %	K12 MG1655 <i>E. coli</i> silver gel LF762 #13 Spot %	Average K12 MG1655 <i>E. coli</i> silver gels Spot %	Cygnus Goat Anti- <i>E. coli</i> WB of K12 MG1655 <i>E. coli</i> LF762 #8 Spot %
985	6.9	42,425	0.059	0.071	0.065	0.033
986	7.0	42,383	0.053	0.039	0.046	0.031
987	5.9	42,383	0.037	0.030	0.033	-
988	5.6	42,299	0.037	0.030	0.033	-
989	5.6	42,215	0.026	0.020	0.023	0.016
990	6.0	42,215	0.142	0.113	0.128	0.006
991	6.2	42,299	0.022	0.020	0.021	0.010
992	6.6	42,173	0.030	0.028	0.029	0.014
993	5.5	42,088	0.010	0.007	0.009	-
994	6.3	42,130	0.043	0.039	0.041	0.018
995	6.4	42,088	0.024	0.022	0.023	0.006
996	6.7	42,088	0.010	0.005	0.008	-
997	7.2	41,793	0.048	0.081	0.065	0.052
998	6.5	41,878	0.055	0.034	0.045	0.012
999	5.0	41,920	0.006	0.004	0.005	-
1000	5.7	41,878	0.087	0.067	0.077	0.031
1001	5.2	41,793	0.025	0.022	0.024	0.004
1002	5.9	41,878	0.026	0.021	0.024	-
1003	6.1	41,835	0.043	0.033	0.038	0.013
1004	5.9	41,793	0.008	0.008	0.008	-
1005	6.8	41,793	0.023	0.017	0.020	0.003
1006	6.9	41,793	0.037	0.022	0.030	-
1007	5.3	41,793	0.018	0.012	0.015	-
1008	6.7	41,625	0.017	0.014	0.015	0.006
1009	6.0	41,625	0.078	0.070	0.074	0.027
1010	7.0	41,751	0.036	0.027	0.032	0.008
1011	5.6	41,541	0.025	0.023	0.024	0.017
1012	6.1	41,667	0.016	0.014	0.015	0.001
1013	6.4	41,498	0.022	0.018	0.020	-
1014	6.2	41,498	0.019	0.015	0.017	0.020
1015	6.7	41,414	0.009	0.006	0.008	-
1016	6.3	41,456	0.012	0.017	0.014	0.014
1017	6.5	41,414	0.078	0.063	0.070	-
1018	6.6	41,414	0.027	0.018	0.022	0.004
1019	6.8	41,414	0.016	0.009	0.013	0.003
1020	5.4	41,330	0.025	0.021	0.023	0.002
1021	7.1	41,288	0.008	0.008	0.008	-
1022	6.1	40,571	-	-	-	0.098
1023	5.5	41,161	0.010	0.010	0.010	-
1024	7.3	40,866	0.087	0.106	0.097	-
1025	5.7	41,246	0.042	0.036	0.039	0.029
1026	5.3	41,288	0.006	0.007	0.007	-
1027	6.0	41,161	0.025	0.025	0.025	-
1028	6.4	41,161	0.007	0.004	0.005	-
1029	7.2	41,035	0.018	0.024	0.021	-

Spot #	pI	MW	K12 MG1655 <i>E. coli</i> silver gel LF762 #12 Spot %	K12 MG1655 <i>E. coli</i> silver gel LF762 #13 Spot %	Average K12 MG1655 <i>E. coli</i> silver gels Spot %	Cygnus Goat Anti- <i>E. coli</i> WB of K12 MG1655 <i>E. coli</i> LF762 #8 Spot %
1030	4.5	40,908	0.007	0.004	0.005	-
1031	5.9	40,782	0.329	0.312	0.321	0.069
1032	6.1	40,993	0.015	0.017	0.016	0.031
1033	4.6	40,614	0.020	0.016	0.018	0.004
1034	5.8	40,908	0.108	0.073	0.090	0.009
1035	7.2	40,908	0.019	0.021	0.020	0.008
1036	4.8	40,403	-	-	-	0.006
1037	5.7	40,782	0.047	0.038	0.042	0.028
1038	6.0	40,698	-	-	-	0.004
1039	6.4	40,782	0.017	0.017	0.017	-
1040	6.7	40,824	0.005	0.006	0.005	-
1041	5.4	40,656	0.041	0.038	0.039	0.003
1042	5.6	40,656	0.024	0.018	0.021	-
1043	5.7	40,656	0.089	0.074	0.081	0.007
1044	5.9	40,698	0.047	0.038	0.043	0.009
1045	5.3	40,740	0.009	0.008	0.008	-
1046	6.8	40,656	0.028	0.014	0.021	-
1047	6.3	40,614	0.014	0.018	0.016	0.034
1048	6.4	40,571	0.017	0.014	0.015	0.006
1049	6.6	40,656	0.023	0.021	0.022	0.013
1050	6.2	40,529	0.056	0.054	0.055	0.041
1051	6.5	40,487	0.079	0.058	0.068	0.016
1052	6.9	40,614	0.021	0.014	0.017	-
1053	7.1	40,445	0.029	0.023	0.026	-
1054	4.7	40,319	-	-	-	0.004
1055	6.8	40,529	0.008	0.006	0.007	-
1056	7.8	40,192	-	-	-	0.020
1057	7.0	40,403	0.113	0.111	0.112	0.013
1058	5.8	40,445	0.022	0.016	0.019	0.008
1059	6.0	40,403	0.006	0.007	0.006	-
1060	7.3	40,361	0.037	0.034	0.035	-
1061	6.1	40,276	0.050	0.046	0.048	-
1062	6.3	40,319	0.014	0.016	0.015	0.021
1063	5.4	40,192	0.019	0.019	0.019	0.002
1064	5.3	40,108	0.005	0.005	0.005	-
1065	5.5	40,150	0.012	0.013	0.012	0.003
1066	6.6	40,150	0.089	0.075	0.082	0.025
1067	6.7	40,192	0.011	0.010	0.011	-
1068	5.7	40,108	0.045	0.038	0.042	0.024
1069	7.2	40,024	0.029	0.032	0.031	-
1070	5.6	40,108	0.022	0.026	0.024	0.003
1071	5.8	39,855	0.110	0.086	0.098	0.042
1072	5.9	39,855	0.255	0.248	0.252	-
1073	6.0	39,981	0.030	0.024	0.027	-
1074	6.8	39,855	0.058	0.037	0.048	0.005

Spot #	pI	MW	K12 MG1655 <i>E. coli</i> silver gel LF762 #12 Spot %	K12 MG1655 <i>E. coli</i> silver gel LF762 #13 Spot %	Average K12 MG1655 <i>E. coli</i> silver gels Spot %	Cygnus Goat Anti- <i>E. coli</i> WB of K12 MG1655 <i>E. coli</i> LF762 #8 Spot %
1075	7.1	39,897	0.007	0.008	0.007	-
1076	5.3	39,855	0.019	0.020	0.020	-
1077	6.4	39,813	0.021	0.016	0.018	-
1078	5.4	39,813	0.005	0.006	0.006	-
1079	5.7	39,855	0.015	0.011	0.013	0.001
1080	6.2	39,771	0.009	0.009	0.009	0.014
1081	6.5	39,855	0.011	0.010	0.011	-
1082	7.1	39,686	0.025	0.029	0.027	-
1083	4.8	39,392	0.005	0.005	0.005	0.002
1084	6.1	39,476	0.017	0.023	0.020	0.017
1085	5.9	39,476	0.043	0.029	0.036	-
1086	7.0	39,518	0.011	0.011	0.011	-
1087	6.5	39,518	0.023	0.020	0.021	-
1088	5.6	39,476	0.014	0.018	0.016	0.002
1089	5.0	39,139	-	-	-	0.004
1090	5.8	39,349	0.012	0.010	0.011	0.015
1091	5.7	39,307	0.011	0.009	0.010	-
1092	6.2	39,307	-	-	-	0.013
1093	6.6	39,223	0.010	0.008	0.009	-
1094	7.2	39,265	0.017	0.017	0.017	-
1095	5.6	39,139	0.016	0.008	0.012	-
1096	5.7	39,181	-	-	-	0.003
1097	6.7	39,097	0.046	0.034	0.040	0.004
1098	6.8	39,181	0.049	0.042	0.045	0.007
1099	6.5	39,223	0.052	0.048	0.050	-
1100	6.3	38,717	0.480	0.427	0.454	0.100
1101	6.6	38,802	0.041	0.025	0.033	0.019
1102	7.0	38,970	0.015	0.017	0.016	-
1103	6.0	38,928	0.030	0.016	0.023	-
1104	6.5	39,054	0.014	0.009	0.012	0.003
1105	5.3	38,928	0.010	0.011	0.011	-
1106	5.5	38,970	0.005	0.005	0.005	-
1107	5.6	38,928	0.005	0.007	0.006	-
1108	5.8	38,886	0.011	0.011	0.011	0.015
1109	6.1	38,844	0.035	0.028	0.031	0.019
1110	6.2	38,759	0.116	0.086	0.101	0.017
1111	5.4	38,844	0.007	0.008	0.007	-
1112	5.9	38,844	0.014	0.013	0.013	0.007
1113	6.0	38,717	0.011	0.007	0.009	-
1114	6.4	38,717	0.067	0.052	0.059	0.027
1115	6.9	38,675	0.018	0.018	0.018	-
1116	6.4	38,675	0.021	0.018	0.019	0.006
1117	4.6	38,001	0.018	0.015	0.016	0.035
1118	5.5	38,591	0.007	0.006	0.007	-
1119	7.1	38,507	0.045	0.035	0.040	0.005

Spot #	pI	MW	K12 MG1655 <i>E. coli</i> silver gel LF762 #12 Spot %	K12 MG1655 <i>E. coli</i> silver gel LF762 #13 Spot %	Average K12 MG1655 <i>E. coli</i> silver gels Spot %	Cygnus Goat Anti- <i>E. coli</i> WB of K12 MG1655 <i>E. coli</i> LF762 #8 Spot %
1120	4.7	37,243	0.050	0.051	0.051	0.103
1121	5.7	38,422	0.009	0.023	0.016	-
1122	6.5	38,464	0.020	0.018	0.019	0.004
1123	5.8	38,380	0.006	0.013	0.010	-
1124	5.9	38,254	-	-	-	0.020
1125	6.1	38,212	0.042	0.038	0.040	0.019
1126	5.5	38,127	0.007	0.009	0.008	-
1127	5.7	38,043	0.017	0.018	0.018	-
1128	5.0	38,085	-	-	-	0.004
1129	5.9	38,127	0.011	0.008	0.009	-
1130	6.6	38,127	0.006	0.005	0.006	-
1131	6.6	37,917	0.018	0.019	0.019	-
1132	6.0	37,959	0.059	0.057	0.058	0.039
1133	6.4	38,001	0.017	0.013	0.015	0.012
1134	6.2	37,748	0.013	0.014	0.013	0.027
1135	6.7	37,917	0.047	0.028	0.038	-
1136	6.8	37,875	0.011	0.009	0.010	-
1137	7.1	37,875	0.012	0.013	0.012	-
1138	5.6	37,580	0.031	0.023	0.027	-
1139	6.9	37,790	0.010	0.009	0.010	-
1140	7.2	37,580	0.053	0.061	0.057	-
1141	4.9	37,664	0.014	0.011	0.013	-
1142	5.8	37,706	0.005	0.008	0.006	-
1143	5.8	37,664	0.004	0.008	0.006	0.002
1144	6.2	37,706	0.025	0.022	0.024	0.025
1145	6.3	37,664	0.062	0.053	0.057	0.049
1146	6.0	37,622	-	-	-	0.006
1147	7.7	37,411	-	-	-	0.035
1148	5.7	37,622	0.005	0.007	0.006	-
1149	6.1	37,453	-	-	-	0.019
1150	7.0	37,453	0.018	0.016	0.017	-
1151	7.4	37,243	0.110	0.087	0.098	-
1152	5.0	37,369	0.014	0.012	0.013	0.009
1153	5.9	37,537	0.010	0.008	0.009	0.006
1154	4.2	37,116	-	-	-	0.011
1155	6.6	37,495	0.017	0.012	0.015	0.002
1156	7.1	37,411	0.014	0.014	0.014	-
1157	6.1	37,495	0.006	0.004	0.005	0.013
1158	6.8	37,327	0.014	0.011	0.013	0.002
1159	7.0	36,905	0.256	0.221	0.239	0.073
1160	6.4	37,285	0.009	0.013	0.011	-
1161	6.5	37,158	0.137	0.112	0.124	0.007
1162	6.0	37,116	0.014	0.014	0.014	-
1163	6.3	37,285	0.005	0.009	0.007	0.002
1164	5.4	37,200	0.010	0.011	0.011	-

Spot #	pI	MW	K12 MG1655 <i>E. coli</i> silver gel LF762 #12 Spot %	K12 MG1655 <i>E. coli</i> silver gel LF762 #13 Spot %	Average K12 MG1655 <i>E. coli</i> silver gels Spot %	Cygnus Goat Anti- <i>E. coli</i> WB of K12 MG1655 <i>E. coli</i> LF762 #8 Spot %
1165	5.9	37,032	0.087	0.066	0.077	-
1166	6.7	37,158	0.029	0.028	0.028	0.002
1167	5.5	37,074	0.005	0.006	0.006	-
1168	5.8	37,032	0.012	0.017	0.015	0.006
1169	5.5	37,074	0.003	0.003	0.003	-
1170	6.9	36,990	0.086	0.071	0.079	0.015
1171	6.6	36,990	0.018	0.019	0.019	-
1172	6.8	36,948	0.017	0.016	0.016	0.004
1173	6.7	36,863	0.221	0.182	0.201	0.008
1174	7.7	35,936	0.338	0.258	0.298	-
1175	6.0	36,905	0.016	0.016	0.016	-
1176	6.3	36,905	0.015	0.018	0.017	0.022
1177	5.6	36,695	0.005	0.009	0.007	-
1178	6.1	36,863	0.004	0.007	0.005	0.009
1179	6.3	36,905	0.013	0.012	0.012	0.030
1180	7.0	36,863	0.017	0.010	0.013	0.002
1181	5.9	36,779	-	-	-	0.001
1182	6.8	36,653	0.020	0.012	0.016	0.001
1183	7.2	36,610	0.047	0.043	0.045	-
1184	5.0	36,526	0.002	0.004	0.003	-
1185	5.4	36,442	0.019	0.017	0.018	0.004
1186	5.1	36,442	0.014	0.015	0.015	-
1187	5.3	36,442	0.006	0.005	0.006	0.004
1188	6.0	36,273	0.163	0.153	0.158	-
1189	5.5	36,273	0.008	0.009	0.008	0.003
1190	6.5	36,400	0.014	0.012	0.013	-
1191	6.5	36,358	0.025	0.020	0.022	-
1192	5.6	36,189	0.019	0.016	0.017	0.003
1193	6.2	36,315	0.013	0.013	0.013	-
1194	5.9	36,189	0.064	0.052	0.058	-
1195	6.2	36,189	0.023	0.020	0.021	-
1196	7.0	36,273	0.011	0.010	0.011	-
1197	5.8	36,063	0.011	0.012	0.011	0.006
1198	6.6	36,273	0.067	0.064	0.066	0.006
1199	6.1	36,147	0.013	0.011	0.012	-
1200	6.4	36,189	0.018	0.011	0.014	-
1201	6.3	36,147	0.008	0.011	0.010	0.041
1202	6.4	36,105	0.018	0.019	0.019	-
1203	5.4	35,726	0.088	0.107	0.098	0.083
1204	6.8	36,063	0.009	0.007	0.008	-
1205	6.6	35,978	0.032	0.024	0.028	-
1206	5.3	35,726	0.011	0.008	0.010	0.004
1207	5.8	35,726	-	-	-	0.004
1208	5.9	35,894	0.006	0.007	0.006	-
1209	6.1	35,810	-	-	-	0.012

Spot #	pI	MW	K12 MG1655 <i>E. coli</i> silver gel LF762 #12 Spot %	K12 MG1655 <i>E. coli</i> silver gel LF762 #13 Spot %	Average K12 MG1655 <i>E. coli</i> silver gels Spot %	Cygnus Goat Anti- <i>E. coli</i> WB of K12 MG1655 <i>E. coli</i> LF762 #8 Spot %
1210	5.6	35,726	0.040	0.038	0.039	-
1211	5.1	35,473	0.003	0.007	0.005	-
1212	5.5	35,599	-	-	-	0.001
1213	6.3	35,641	0.012	0.011	0.012	0.013
1214	7.0	35,515	0.010	0.007	0.009	-
1215	7.1	35,388	0.090	0.080	0.085	0.019
1216	7.1	35,515	0.026	0.024	0.025	-
1217	5.5	35,431	0.014	0.014	0.014	0.002
1218	6.0	35,473	-	-	-	0.002
1219	6.9	35,473	0.017	0.017	0.017	0.003
1220	4.2	35,220	-	-	-	0.012
1221	6.7	35,473	0.016	0.013	0.014	0.003
1222	6.2	35,431	0.053	0.037	0.045	-
1223	4.5	35,262	0.011	0.010	0.010	-
1224	5.9	35,473	0.012	0.009	0.010	0.004
1225	6.0	35,431	0.015	0.020	0.018	0.003
1226	6.8	35,304	0.042	0.033	0.038	0.004
1227	5.8	35,262	-	-	-	0.002
1228	6.2	35,304	0.009	0.011	0.010	-
1229	6.4	34,883	0.113	0.091	0.102	0.140
1230	5.6	35,009	0.046	0.038	0.042	0.005
1231	5.7	34,714	0.261	0.241	0.251	-
1232	6.4	34,841	0.093	0.100	0.097	0.051
1233	5.9	35,051	0.007	0.009	0.008	-
1234	6.1	34,925	0.091	0.079	0.085	0.060
1235	6.5	35,009	0.019	0.021	0.020	0.009
1236	6.6	34,883	0.311	0.256	0.283	0.104
1237	5.6	35,136	0.004	0.005	0.004	-
1238	6.3	34,756	0.021	0.017	0.019	0.013
1239	5.8	34,756	0.013	0.018	0.016	0.005
1240	6.0	35,009	0.008	0.007	0.008	-
1241	6.2	34,841	0.059	0.048	0.054	-
1242	7.1	34,756	0.042	0.028	0.035	-
1243	7.2	34,756	0.057	0.049	0.053	-
1244	7.8	34,124	0.160	0.125	0.143	0.430
1245	5.5	34,714	0.011	0.011	0.011	-
1246	6.8	34,714	0.029	0.020	0.024	0.010
1247	5.9	34,672	0.074	0.062	0.068	-
1248	6.7	34,756	0.025	0.020	0.022	0.003
1249	5.2	34,588	0.009	0.007	0.008	0.005
1250	5.3	34,419	0.040	0.029	0.035	0.013
1251	5.4	34,588	0.030	0.033	0.031	0.002
1252	7.1	34,546	0.048	0.030	0.039	-
1253	7.0	34,546	0.016	0.015	0.015	-
1254	5.0	34,588	0.006	0.004	0.005	-

Spot #	pI	MW	K12 MG1655 <i>E. coli</i> silver gel LF762 #12 Spot %	K12 MG1655 <i>E. coli</i> silver gel LF762 #13 Spot %	Average K12 MG1655 <i>E. coli</i> silver gels Spot %	Cygnus Goat Anti- <i>E. coli</i> WB of K12 MG1655 <i>E. coli</i> LF762 #8 Spot %
1255	6.0	34,630	0.002	0.003	0.003	-
1256	5.8	34,461	0.028	0.023	0.026	-
1257	6.9	34,461	0.014	0.015	0.014	-
1258	5.6	34,335	0.004	0.004	0.004	-
1259	6.5	34,335	0.016	0.015	0.016	-
1260	5.1	34,335	0.006	0.006	0.006	0.001
1261	7.3	33,871	0.721	0.668	0.695	0.102
1262	6.7	34,293	0.013	0.012	0.013	-
1263	6.8	34,209	0.052	0.030	0.041	0.008
1264	6.2	34,166	0.063	0.053	0.058	-
1265	6.0	34,082	0.030	0.028	0.029	-
1266	5.6	33,914	0.102	0.100	0.101	-
1267	7.5	33,829	0.031	0.034	0.033	0.076
1268	5.6	33,871	-	-	-	0.003
1269	6.8	33,998	0.037	0.027	0.032	0.011
1270	5.4	33,871	0.013	0.015	0.014	0.003
1271	6.1	33,998	0.029	0.026	0.027	0.013
1272	5.1	33,956	0.006	0.005	0.005	-
1273	5.5	33,829	0.024	0.025	0.025	0.002
1274	6.2	33,998	0.031	0.025	0.028	0.017
1275	6.3	33,871	0.045	0.044	0.044	0.003
1276	7.2	33,829	0.078	0.087	0.082	-
1277	6.9	33,787	0.047	0.054	0.050	-
1278	7.1	33,619	0.436	0.352	0.394	-
1279	5.4	33,619	-	-	-	0.002
1280	6.0	33,492	0.043	0.029	0.036	0.052
1281	4.9	33,703	0.004	0.004	0.004	-
1282	6.7	33,619	-	-	-	0.035
1283	7.0	33,577	0.043	0.042	0.042	-
1284	6.4	33,282	0.552	0.427	0.489	0.055
1285	5.8	33,661	0.014	0.010	0.012	0.020
1286	5.0	33,239	0.052	0.060	0.056	0.008
1287	6.5	33,534	0.103	0.098	0.101	0.044
1288	6.5	33,450	0.038	0.036	0.037	0.021
1289	6.7	33,577	0.023	0.022	0.023	0.044
1290	7.3	32,944	-	-	-	0.342
1291	7.7	32,776	0.842	0.738	0.790	0.245
1292	6.1	33,408	0.072	0.044	0.058	0.017
1293	6.0	33,324	0.016	0.015	0.015	0.017
1294	6.6	33,366	0.027	0.022	0.025	0.017
1295	5.7	33,324	0.043	0.048	0.046	0.020
1296	5.9	33,282	0.019	0.014	0.016	0.013
1297	6.2	33,366	0.074	0.051	0.063	0.012
1298	6.3	33,155	0.153	0.143	0.148	0.007
1299	5.2	33,197	0.007	0.005	0.006	-

Spot #	pI	MW	K12 MG1655 <i>E. coli</i> silver gel LF762 #12 Spot %	K12 MG1655 <i>E. coli</i> silver gel LF762 #13 Spot %	Average K12 MG1655 <i>E. coli</i> silver gels Spot %	Cygnus Goat Anti- <i>E. coli</i> WB of K12 MG1655 <i>E. coli</i> LF762 #8 Spot %
1300	5.7	33,071	0.028	0.024	0.026	0.011
1301	5.9	33,071	0.029	0.030	0.030	0.025
1302	6.8	33,029	0.026	0.018	0.022	0.056
1303	4.8	32,944	0.003	0.006	0.005	-
1304	5.6	32,987	0.014	0.012	0.013	0.002
1305	6.4	32,944	0.053	0.045	0.049	0.002
1306	5.8	32,987	0.022	0.009	0.015	0.029
1307	5.4	32,734	0.013	0.021	0.017	-
1308	6.9	32,818	0.018	0.019	0.018	0.054
1309	6.7	32,860	-	-	-	0.026
1310	5.6	32,692	0.023	0.058	0.040	0.011
1311	7.2	32,734	0.012	0.011	0.012	-
1312	6.5	32,860	0.044	0.030	0.037	0.002
1313	6.6	32,650	0.026	0.023	0.024	0.048
1314	7.0	32,692	-	-	-	0.061
1315	7.1	32,692	0.043	0.033	0.038	-
1316	6.1	32,734	0.029	0.016	0.023	0.002
1317	6.8	32,607	0.024	0.020	0.022	0.050
1318	5.5	32,607	0.036	0.040	0.038	-
1319	6.0	32,312	0.034	0.026	0.030	0.031
1320	6.1	32,607	0.016	0.011	0.014	0.034
1321	7.1	32,607	0.028	0.035	0.032	0.026
1322	6.5	32,397	-	-	-	0.069
1323	5.7	32,523	0.025	0.011	0.018	-
1324	6.6	32,523	0.090	0.074	0.082	0.048
1325	5.7	32,439	0.012	0.009	0.011	-
1326	5.8	32,439	0.101	0.069	0.085	-
1327	6.2	32,355	0.118	0.076	0.097	0.052
1328	5.9	31,891	0.459	0.466	0.463	0.161
1329	7.3	32,397	0.006	0.008	0.007	-
1330	5.5	32,228	0.023	0.022	0.022	-
1331	6.3	32,312	0.056	0.039	0.047	0.033
1332	5.8	32,270	0.043	0.024	0.033	0.009
1333	6.4	32,060	0.485	0.440	0.462	0.031
1334	6.8	32,102	0.071	0.060	0.066	0.058
1335	6.9	32,186	0.056	0.047	0.051	0.053
1336	7.2	32,186	0.022	0.021	0.022	0.054
1337	5.0	32,102	0.004	0.006	0.005	-
1338	6.5	32,186	0.026	0.026	0.026	0.031
1339	7.0	31,891	0.324	0.259	0.291	0.146
1340	5.3	31,975	0.005	0.005	0.005	-
1341	7.1	31,933	0.232	0.181	0.206	0.107
1342	4.8	31,849	0.048	0.064	0.056	-
1343	6.1	31,975	-	-	-	0.028
1344	7.0	31,975	0.042	0.033	0.037	0.030



Spot #	pI	MW	K12 MG1655 <i>E. coli</i> silver gel LF762 #12 Spot %	K12 MG1655 <i>E. coli</i> silver gel LF762 #13 Spot %	Average K12 MG1655 <i>E. coli</i> silver gels Spot %	Cygnus Goat Anti- <i>E. coli</i> WB of K12 MG1655 <i>E. coli</i> LF762 #8 Spot %
1345	7.6	31,807	0.063	0.051	0.057	0.049
1346	6.6	31,722	0.081	0.057	0.069	0.011
1347	5.7	31,807	0.018	0.018	0.018	0.010
1348	6.7	31,849	0.046	0.045	0.046	0.016
1349	5.3	31,512	0.010	0.009	0.009	-
1350	5.4	31,470	0.007	0.009	0.008	-
1351	6.9	31,807	0.042	0.021	0.032	0.011
1352	4.9	31,554	0.005	0.004	0.005	-
1353	5.6	31,596	0.005	0.008	0.006	-
1354	6.2	31,722	0.008	0.006	0.007	0.014
1355	5.8	31,765	0.006	0.003	0.004	0.005
1356	6.2	31,680	0.010	0.007	0.009	0.006
1357	5.8	31,638	0.006	0.008	0.007	0.006
1358	6.5	31,512	0.069	0.068	0.069	-
1359	7.4	31,470	0.097	0.094	0.095	0.088
1360	6.0	31,512	0.046	0.039	0.043	-
1361	7.2	31,596	0.009	0.014	0.012	-
1362	6.5	31,428	0.018	0.018	0.018	0.010
1363	5.5	31,301	0.012	0.018	0.015	-
1364	5.8	31,048	0.331	0.294	0.313	0.132
1365	7.3	31,006	-	-	-	0.024
1366	5.0	31,217	0.005	0.005	0.005	-
1367	5.7	31,343	0.027	0.017	0.022	0.010
1368	6.1	31,343	0.017	0.005	0.011	0.022
1369	7.7	31,343	0.024	0.020	0.022	-
1370	6.0	31,217	0.015	0.011	0.013	0.009
1371	6.4	31,133	0.027	0.029	0.028	0.048
1372	6.9	31,259	0.071	0.048	0.060	0.017
1373	6.2	31,217	0.019	0.016	0.018	-
1374	6.3	31,217	0.055	0.053	0.054	0.062
1375	7.0	31,048	-	-	-	0.025
1376	6.7	30,964	0.060	0.063	0.061	-
1377	7.1	31,090	-	-	-	0.032
1378	6.4	31,048	0.013	0.013	0.013	-
1379	6.6	30,880	0.043	0.039	0.041	0.005
1380	6.7	30,838	0.060	0.046	0.053	0.005
1381	6.8	30,795	0.037	0.039	0.038	0.008
1382	4.8	30,711	0.004	0.008	0.006	-
1383	6.5	30,753	0.009	0.012	0.011	0.012
1384	6.9	30,795	0.038	0.035	0.037	-
1385	6.0	30,585	0.011	0.010	0.010	-
1386	6.0	30,753	0.012	0.016	0.014	-
1387	6.1	30,795	0.007	0.005	0.006	0.017
1388	7.2	30,669	0.013	0.016	0.014	-
1389	5.6	30,627	0.046	0.047	0.046	-

Spot #	pI	MW	K12 MG1655 <i>E. coli</i> silver gel LF762 #12 Spot %	K12 MG1655 <i>E. coli</i> silver gel LF762 #13 Spot %	Average K12 MG1655 <i>E. coli</i> silver gels Spot %	Cygnus Goat Anti- <i>E. coli</i> WB of K12 MG1655 <i>E. coli</i> LF762 #8 Spot %
1390	4.9	30,500	0.009	0.009	0.009	-
1391	5.7	30,416	0.014	0.046	0.030	0.013
1392	5.9	30,500	0.011	0.019	0.015	0.007
1393	5.8	30,416	0.029	0.012	0.021	-
1394	6.2	30,332	0.065	0.059	0.062	0.028
1395	6.5	30,458	0.022	0.017	0.020	-
1396	5.5	30,416	0.007	0.007	0.007	0.002
1397	6.3	30,416	0.051	0.044	0.048	0.043
1398	7.1	30,374	0.182	0.160	0.171	-
1399	6.9	30,416	0.039	0.027	0.033	-
1400	7.7	29,658	0.679	0.371	0.525	-
1401	5.4	30,290	0.014	0.021	0.017	-
1402	6.2	30,206	0.012	0.010	0.011	-
1403	7.7	30,290	0.007	0.010	0.009	-
1404	4.6	28,871	0.206	0.100	0.153	-
1405	6.6	30,248	0.035	0.029	0.032	-
1406	6.6	30,206	0.041	0.043	0.042	0.004
1407	6.1	30,206	0.031	0.025	0.028	0.019
1408	6.7	30,121	0.051	0.043	0.047	0.002
1409	6.4	30,079	0.019	0.034	0.027	-
1410	6.6	30,121	0.013	0.007	0.010	-
1411	6.7	29,953	0.419	0.356	0.388	0.012
1412	5.3	29,868	0.014	0.015	0.015	0.002
1413	6.1	29,995	0.009	0.013	0.011	-
1414	6.5	29,953	0.016	0.024	0.020	0.024
1415	7.5	29,995	0.028	0.018	0.023	-
1416	6.8	29,953	0.027	0.028	0.027	0.004
1417	7.2	29,911	0.027	0.039	0.033	0.004
1418	7.2	29,784	0.020	0.026	0.023	0.004
1419	5.3	29,658	0.040	0.047	0.043	0.004
1420	7.2	29,826	0.030	0.057	0.044	-
1421	5.6	29,658	0.037	0.047	0.042	0.006
1422	6.9	29,784	0.043	0.044	0.043	0.004
1423	7.4	29,531	0.051	0.049	0.050	0.025
1424	7.3	29,447	0.017	0.031	0.024	-
1425	5.7	29,658	0.010	0.030	0.020	-
1426	5.9	29,658	0.015	0.009	0.012	-
1427	6.3	29,700	0.008	0.013	0.011	0.023
1428	6.0	29,531	0.064	0.059	0.062	0.014
1429	5.5	29,531	0.016	0.013	0.015	0.003
1430	5.8	29,405	0.056	0.065	0.060	0.060
1431	7.0	29,531	0.026	0.037	0.032	0.003
1432	7.0	29,531	0.010	0.013	0.011	0.002
1433	5.0	29,236	0.012	0.010	0.011	0.005
1434	6.1	29,531	0.028	0.038	0.033	0.016

Spot #	pI	MW	K12 MG1655 <i>E. coli</i> silver gel LF762 #12 Spot %	K12 MG1655 <i>E. coli</i> silver gel LF762 #13 Spot %	Average K12 MG1655 <i>E. coli</i> silver gels Spot %	Cygnus Goat Anti- <i>E. coli</i> WB of K12 MG1655 <i>E. coli</i> LF762 #8 Spot %
1435	6.7	29,405	0.033	0.036	0.035	-
1436	5.5	29,194	0.005	0.007	0.006	0.002
1437	6.8	29,405	0.014	0.013	0.014	0.001
1438	7.2	29,279	-	-	-	0.007
1439	6.5	29,279	0.006	0.011	0.009	0.012
1440	6.6	28,991	-	-	-	0.005
1441	5.3	29,068	0.011	0.010	0.011	-
1442	6.1	29,110	0.028	0.030	0.029	0.005
1443	6.2	28,991	0.126	0.114	0.120	0.032
1444	6.0	29,110	0.022	0.017	0.019	0.003
1445	7.4	28,776	0.474	0.385	0.430	0.105
1446	6.3	28,967	-	-	-	0.028
1447	6.8	29,110	0.077	0.086	0.082	0.010
1448	6.2	28,967	0.077	0.060	0.068	-
1449	6.4	28,871	0.152	0.148	0.150	0.052
1450	5.4	28,943	0.047	0.055	0.051	-
1451	5.2	28,728	0.023	0.024	0.024	-
1452	6.0	28,871	0.104	0.084	0.094	0.026
1453	6.6	28,967	0.002	0.002	0.002	-
1454	5.9	28,871	0.025	0.023	0.024	-
1455	7.7	28,490	-	-	-	0.603
1456	5.7	28,871	0.007	0.008	0.008	-
1457	5.7	28,848	0.016	0.015	0.015	0.004
1458	6.8	28,848	0.018	0.016	0.017	-
1459	7.1	28,871	0.060	0.054	0.057	-
1460	5.5	28,752	0.006	0.010	0.008	0.006
1461	6.5	28,824	0.004	0.007	0.006	-
1462	5.5	28,800	0.004	0.004	0.004	-
1463	6.1	28,752	-	-	-	0.011
1464	6.7	28,657	-	-	-	0.011
1465	5.3	28,704	0.042	0.049	0.045	0.002
1466	6.8	28,704	0.013	0.013	0.013	-
1467	6.7	28,657	0.027	0.037	0.032	0.019
1468	5.4	28,728	0.004	0.010	0.007	-
1469	7.0	28,681	0.019	0.020	0.019	-
1470	6.5	28,585	0.016	0.031	0.023	0.030
1471	6.0	28,657	0.025	0.030	0.027	-
1472	5.8	28,514	0.028	0.027	0.027	-
1473	6.6	28,585	0.008	0.011	0.009	0.005
1474	6.9	28,561	0.014	0.021	0.017	-
1475	7.3	28,490	0.054	0.102	0.078	0.030
1476	5.3	28,490	0.011	0.013	0.012	-
1477	6.3	28,442	0.141	0.131	0.136	0.073
1478	7.0	28,442	0.024	0.024	0.024	-
1479	6.2	28,537	0.002	0.004	0.003	-

Spot #	pI	MW	K12 MG1655 <i>E. coli</i> silver gel LF762 #12 Spot %	K12 MG1655 <i>E. coli</i> silver gel LF762 #13 Spot %	Average K12 MG1655 <i>E. coli</i> silver gels Spot %	Cygnus Goat Anti- <i>E. coli</i> WB of K12 MG1655 <i>E. coli</i> LF762 #8 Spot %
1480	5.7	28,394	0.011	0.015	0.013	-
1481	7.1	28,537	-	-	-	0.004
1482	5.6	28,370	0.013	0.028	0.021	0.003
1483	6.8	28,418	0.031	0.028	0.030	-
1484	5.6	28,394	0.005	0.016	0.011	0.002
1485	5.9	28,370	0.098	0.093	0.095	-
1486	7.8	27,893	0.569	0.562	0.566	2.297
1487	6.2	28,394	0.005	0.006	0.005	-
1488	6.0	28,418	0.002	0.007	0.004	0.006
1489	6.0	28,394	0.004	0.002	0.003	-
1490	5.5	28,299	0.027	0.044	0.035	-
1491	6.1	28,299	0.035	0.026	0.030	0.038
1492	6.4	28,203	0.013	0.018	0.015	0.038
1493	6.4	28,275	0.046	0.054	0.050	0.030
1494	7.7	28,251	0.070	0.051	0.061	-
1495	4.9	27,965	0.018	0.021	0.019	-
1496	6.6	28,180	0.034	0.032	0.033	0.030
1497	7.2	28,227	0.059	0.052	0.056	0.010
1498	5.3	28,156	0.009	0.010	0.010	-
1499	6.1	28,156	0.006	0.005	0.006	0.040
1500	4.4	28,036	0.008	0.008	0.008	-
1501	7.0	28,108	0.027	0.030	0.029	-
1502	7.0	28,108	0.006	0.011	0.008	-
1503	6.7	28,084	0.008	0.008	0.008	0.017
1504	6.7	27,989	0.279	0.226	0.252	0.094
1505	5.2	27,917	0.003	0.006	0.005	-
1506	6.0	27,989	0.031	0.035	0.033	0.034
1507	6.3	28,013	0.062	0.054	0.058	0.048
1508	5.3	27,869	0.006	0.011	0.009	0.009
1509	6.5	27,989	0.036	0.037	0.036	0.023
1510	7.3	27,869	0.039	0.059	0.049	0.062
1511	5.4	27,869	0.049	0.077	0.063	0.076
1512	5.9	27,965	0.010	0.016	0.013	-
1513	5.6	27,893	0.015	0.019	0.017	0.009
1514	5.8	27,893	0.014	0.021	0.018	0.033
1515	6.5	27,965	0.011	0.013	0.012	0.019
1516	5.1	27,917	-	-	-	0.001
1517	6.2	27,798	0.016	0.016	0.016	0.047
1518	6.9	27,917	0.014	0.016	0.015	0.040
1519	5.5	27,798	0.009	0.009	0.009	0.028
1520	5.7	27,822	0.031	0.046	0.039	-
1521	6.1	27,941	0.022	0.024	0.023	0.016
1522	5.5	27,750	0.043	0.054	0.048	0.026
1523	5.3	27,822	-	-	-	0.006
1524	7.2	27,750	0.032	0.041	0.037	-

Spot #	pI	MW	K12 MG1655 <i>E. coli</i> silver gel LF762 #12 Spot %	K12 MG1655 <i>E. coli</i> silver gel LF762 #13 Spot %	Average K12 MG1655 <i>E. coli</i> silver gels Spot %	Cygnus Goat Anti- <i>E. coli</i> WB of K12 MG1655 <i>E. coli</i> LF762 #8 Spot %
1525	6.0	27,703	0.092	0.090	0.091	0.045
1526	7.0	27,703	0.010	0.009	0.010	0.034
1527	7.0	27,703	0.022	0.047	0.035	0.041
1528	6.1	27,655	0.024	0.030	0.027	0.007
1529	6.4	27,631	0.022	0.024	0.023	0.013
1530	7.1	27,679	0.008	0.012	0.010	0.030
1531	7.3	27,655	0.009	0.011	0.010	0.008
1532	5.6	27,607	0.005	0.006	0.006	0.008
1533	6.6	27,631	0.026	0.030	0.028	0.045
1534	6.7	27,512	0.423	0.385	0.404	0.026
1535	6.8	27,655	0.077	0.071	0.074	0.006
1536	6.5	27,583	0.062	0.047	0.055	0.005
1537	6.0	27,583	0.008	0.015	0.011	0.019
1538	4.5	26,438	-	-	-	0.149
1539	5.9	27,559	0.010	0.025	0.017	-
1540	6.3	27,559	0.124	0.110	0.117	0.024
1541	5.6	27,440	0.021	0.023	0.022	0.021
1542	6.8	27,440	0.128	0.136	0.132	0.005
1543	5.3	27,416	0.011	0.016	0.014	-
1544	5.8	27,345	0.118	0.148	0.133	0.076
1545	6.5	27,345	0.018	0.019	0.018	0.020
1546	7.2	27,249	-	-	-	0.083
1547	5.4	27,321	0.014	0.018	0.016	-
1548	5.2	27,154	0.015	0.015	0.015	-
1549	7.2	27,225	0.014	0.022	0.018	0.031
1550	7.3	27,202	0.021	0.011	0.016	0.042
1551	7.0	27,225	0.243	0.302	0.273	0.173
1552	6.6	27,249	0.069	0.050	0.060	0.010
1553	5.0	27,130	0.005	0.009	0.007	0.003
1554	5.5	27,202	0.025	0.033	0.029	-
1555	6.2	27,225	0.031	0.044	0.037	0.010
1556	6.0	27,035	0.195	0.408	0.302	0.013
1557	6.2	27,225	0.039	0.034	0.036	0.006
1558	6.4	27,130	0.070	0.078	0.074	0.008
1559	5.7	27,106	0.022	0.029	0.025	-
1560	6.1	27,035	0.161	0.104	0.133	0.005
1561	5.9	26,939	0.027	0.085	0.056	0.062
1562	6.0	27,154	0.026	0.050	0.038	0.003
1563	5.6	27,011	0.009	0.014	0.012	0.002
1564	6.3	26,963	0.621	0.479	0.550	0.015
1565	7.8	27,058	0.006	0.013	0.009	-
1566	5.3	26,844	0.127	0.131	0.129	-
1567	6.8	27,082	0.023	0.015	0.019	0.002
1568	6.6	26,987	0.044	0.051	0.048	0.009
1569	6.5	26,939	0.034	0.036	0.035	0.005

Spot #	pI	MW	K12 MG1655 <i>E. coli</i> silver gel LF762 #12 Spot %	K12 MG1655 <i>E. coli</i> silver gel LF762 #13 Spot %	Average K12 MG1655 <i>E. coli</i> silver gels Spot %	Cygnus Goat Anti- <i>E. coli</i> WB of K12 MG1655 <i>E. coli</i> LF762 #8 Spot %
1570	6.7	26,891	0.041	0.053	0.047	0.016
1571	5.8	26,891	0.059	0.067	0.063	0.057
1572	5.8	26,939	0.021	0.024	0.023	0.022
1573	6.2	26,939	0.049	0.050	0.050	0.005
1574	5.6	26,796	0.023	0.020	0.022	0.018
1575	7.4	26,748	0.024	0.035	0.029	-
1576	5.3	26,796	0.008	0.009	0.009	-
1577	7.8	26,748	0.053	0.062	0.058	0.204
1578	5.1	26,796	-	-	-	0.002
1579	5.5	26,820	0.005	0.012	0.009	0.002
1580	7.3	26,748	0.015	0.023	0.019	0.049
1581	7.6	26,462	0.298	0.272	0.285	0.427
1582	5.4	26,701	0.008	0.010	0.009	-
1583	7.2	26,629	0.026	0.036	0.031	0.164
1584	6.0	26,748	0.051	0.078	0.064	0.003
1585	7.0	26,605	0.012	0.041	0.026	0.060
1586	6.4	26,724	0.010	0.012	0.011	0.005
1587	6.8	26,653	0.034	0.057	0.045	0.118
1588	7.1	26,581	0.058	0.072	0.065	0.067
1589	6.6	26,557	-	-	-	0.053
1590	5.7	26,605	0.016	0.012	0.014	0.010
1591	6.2	26,581	0.014	0.018	0.016	0.039
1592	6.4	26,653	0.023	0.030	0.026	0.026
1593	6.6	26,534	-	-	-	0.065
1594	5.2	26,534	0.003	0.005	0.004	-
1595	5.8	26,462	0.147	0.156	0.152	0.063
1596	6.1	26,557	-	-	-	0.011
1597	5.3	26,486	-	-	-	0.002
1598	5.0	26,319	0.025	0.025	0.025	-
1599	6.2	26,390	0.027	0.030	0.028	0.062
1600	6.4	26,414	0.080	0.094	0.087	0.078
1601	6.5	26,414	0.014	0.023	0.018	0.054
1602	5.5	26,367	0.006	0.007	0.006	0.003
1603	6.0	26,390	0.016	0.021	0.019	0.024
1604	6.0	26,271	0.045	0.064	0.055	0.084
1605	6.7	26,295	0.037	0.042	0.039	-
1606	7.3	25,961	0.063	0.068	0.066	0.338
1607	5.8	26,271	0.016	0.030	0.023	0.030
1608	7.0	26,271	0.021	0.026	0.023	0.023
1609	7.1	26,343	0.008	0.019	0.013	0.031
1610	5.7	26,271	0.028	0.028	0.028	0.016
1611	6.1	26,176	0.081	0.068	0.075	0.043
1612	6.9	26,033	0.097	0.097	0.097	0.027
1613	6.2	26,056	0.203	0.186	0.194	0.023
1614	6.8	26,009	0.038	0.053	0.045	-

Spot #	pI	MW	K12 MG1655 <i>E. coli</i> silver gel LF762 #12 Spot %	K12 MG1655 <i>E. coli</i> silver gel LF762 #13 Spot %	Average K12 MG1655 <i>E. coli</i> silver gels Spot %	Cygnus Goat Anti- <i>E. coli</i> WB of K12 MG1655 <i>E. coli</i> LF762 #8 Spot %
1615	7.6	25,317	0.407	0.313	0.360	2.217
1616	5.9	25,937	0.124	0.121	0.123	-
1617	4.9	25,937	0.006	0.007	0.007	-
1618	6.6	25,937	0.065	0.072	0.068	0.013
1619	5.3	25,770	-	-	-	0.101
1620	6.5	25,913	0.017	0.018	0.018	-
1621	7.1	25,961	0.011	0.021	0.016	-
1622	6.3	25,937	0.016	0.030	0.023	0.028
1623	5.6	25,890	0.007	0.009	0.008	-
1624	5.7	25,842	0.096	0.108	0.102	0.016
1625	7.7	25,174	0.651	0.731	0.691	1.896
1626	5.8	25,675	0.013	0.020	0.016	-
1627	5.9	25,675	0.233	0.268	0.250	0.041
1628	6.7	25,770	0.009	0.018	0.014	0.017
1629	5.7	25,699	0.014	0.013	0.014	-
1630	5.5	25,699	0.005	0.008	0.006	0.007
1631	5.6	25,603	0.030	0.039	0.035	-
1632	6.1	25,675	-	-	-	0.005
1633	7.2	25,651	0.004	0.007	0.005	-
1634	6.8	25,508	0.033	0.030	0.031	-
1635	7.1	25,556	0.046	0.063	0.054	0.035
1636	6.4	25,389	0.043	0.039	0.041	0.094
1637	7.0	25,556	0.014	0.027	0.020	0.038
1638	6.0	25,508	-	-	-	0.032
1639	6.1	25,579	0.051	0.022	0.037	-
1640	5.0	25,484	0.019	0.019	0.019	0.030
1641	6.3	25,460	0.016	0.019	0.017	0.035
1642	6.5	25,436	0.010	0.016	0.013	0.034
1643	5.8	25,436	0.010	0.033	0.022	0.042
1644	6.6	25,436	0.028	0.030	0.029	0.016
1645	7.2	25,269	0.032	0.064	0.048	0.085
1646	5.1	25,245	-	-	-	0.038
1647	6.9	25,222	0.113	0.131	0.122	0.116
1648	5.7	25,198	-	-	-	0.087
1649	6.1	25,245	0.021	0.027	0.024	0.037
1650	5.5	25,078	0.012	0.015	0.014	0.048
1651	5.6	25,055	0.052	0.060	0.056	0.122
1652	7.1	25,150	0.019	0.028	0.024	0.041
1653	6.0	25,222	0.027	0.047	0.037	0.018
1654	5.7	25,126	0.014	0.011	0.012	0.027
1655	5.0	24,983	0.029	0.033	0.031	-
1656	5.4	25,078	-	-	-	0.032
1657	6.3	24,888	-	-	-	0.058
1658	6.8	25,055	0.035	0.040	0.038	0.058
1659	5.3	25,031	0.009	0.014	0.011	0.017

Spot #	pI	MW	K12 MG1655 <i>E. coli</i> silver gel LF762 #12 Spot %	K12 MG1655 <i>E. coli</i> silver gel LF762 #13 Spot %	Average K12 MG1655 <i>E. coli</i> silver gels Spot %	Cygnus Goat Anti- <i>E. coli</i> WB of K12 MG1655 <i>E. coli</i> LF762 #8 Spot %
1660	6.7	25,031	0.053	0.059	0.056	0.045
1661	7.0	25,078	0.022	0.036	0.029	0.055
1662	5.3	25,007	0.011	0.013	0.012	0.012
1663	7.7	24,434	0.640	0.773	0.706	0.523
1664	5.8	24,888	0.024	0.019	0.021	0.006
1665	5.9	24,840	0.041	0.027	0.034	0.009
1666	6.1	24,888	0.041	0.025	0.033	0.024
1667	6.3	24,840	0.126	0.134	0.130	0.025
1668	6.0	24,864	0.025	0.022	0.023	0.006
1669	6.6	24,840	0.015	0.018	0.016	0.013
1670	6.0	24,888	0.009	0.007	0.008	0.002
1671	6.1	24,864	0.008	0.008	0.008	0.002
1672	6.5	24,697	0.048	0.051	0.050	0.009
1673	5.7	24,649	0.074	0.088	0.081	0.135
1674	5.8	24,673	0.014	0.021	0.018	0.020
1675	6.6	24,697	0.007	0.017	0.012	0.005
1676	5.1	24,625	0.009	0.011	0.010	-
1677	7.3	24,482	0.097	0.132	0.115	0.086
1678	6.7	24,649	-	-	-	0.007
1679	5.3	24,601	0.006	0.009	0.008	-
1680	7.1	24,530	0.013	0.034	0.024	0.007
1681	6.4	24,506	0.024	0.022	0.023	0.057
1682	6.9	24,410	0.135	0.198	0.166	0.046
1683	5.6	24,458	0.039	0.044	0.041	-
1684	7.1	24,387	0.067	0.094	0.081	0.019
1685	6.1	24,363	0.047	0.045	0.046	0.116
1686	5.4	24,291	0.056	0.071	0.063	0.051
1687	5.5	24,172	0.014	0.013	0.013	-
1688	6.0	24,267	0.114	0.153	0.134	0.111
1689	6.3	24,267	0.023	0.024	0.024	0.172
1690	6.6	24,363	0.008	0.008	0.008	0.043
1691	5.9	24,291	0.004	0.007	0.005	-
1692	5.8	24,100	0.034	0.039	0.036	-
1693	6.7	24,196	0.066	0.072	0.069	0.078
1694	6.8	24,172	0.011	0.016	0.013	0.034
1695	5.8	24,005	-	-	-	0.013
1696	6.5	23,981	0.010	0.014	0.012	-
1697	6.6	23,814	0.133	0.110	0.121	-
1698	6.4	23,933	0.008	0.009	0.008	-
1699	6.1	23,910	-	-	-	0.006
1700	6.9	23,933	0.007	0.012	0.010	-
1701	5.9	23,886	0.005	0.009	0.007	-
1702	7.4	23,790	0.006	0.030	0.018	0.026
1703	5.3	23,719	-	-	-	0.002
1704	6.3	23,719	0.044	0.064	0.054	0.050



Spot #	pI	MW	K12 MG1655 <i>E. coli</i> silver gel LF762 #12 Spot %	K12 MG1655 <i>E. coli</i> silver gel LF762 #13 Spot %	Average K12 MG1655 <i>E. coli</i> silver gels Spot %	Cygnus Goat Anti- <i>E. coli</i> WB of K12 MG1655 <i>E. coli</i> LF762 #8 Spot %
1705	6.6	23,671	0.021	0.033	0.027	0.020
1706	7.1	23,385	0.461	0.479	0.470	0.394
1707	7.5	23,122	-	-	-	0.559
1708	6.9	23,623	0.075	0.084	0.079	0.088
1709	5.6	23,623	-	-	-	0.002
1710	6.7	23,695	0.028	0.032	0.030	-
1711	4.4	23,599	0.005	0.007	0.006	-
1712	6.4	23,719	0.007	0.008	0.008	-
1713	6.8	23,552	0.022	0.018	0.020	-
1714	7.0	23,504	0.038	0.062	0.050	0.090
1715	6.0	23,576	0.016	0.028	0.022	0.031
1716	5.7	23,552	0.010	0.016	0.013	-
1717	6.5	23,480	-	-	-	0.004
1718	5.8	23,480	0.008	0.007	0.007	0.008
1719	6.1	23,337	-	-	-	0.022
1720	6.4	23,385	0.022	0.019	0.020	0.012
1721	6.2	23,361	0.018	0.022	0.020	0.025
1722	5.8	23,337	0.006	0.005	0.005	-
1723	6.3	23,170	0.143	0.207	0.175	0.164
1724	5.6	23,337	0.013	0.008	0.010	-
1725	6.4	23,313	-	-	-	0.009
1726	5.7	23,265	0.007	0.009	0.008	-
1727	5.5	23,146	0.006	0.006	0.006	-
1728	5.0	23,075	0.005	0.015	0.010	-
1729	5.3	23,122	0.006	0.006	0.006	-
1730	6.0	23,170	0.009	0.009	0.009	0.023
1731	6.6	22,979	0.017	0.015	0.016	0.023
1732	7.0	22,669	0.029	0.049	0.039	0.029
1733	5.7	22,884	0.038	0.051	0.044	-
1734	6.9	22,741	-	-	-	0.012
1735	6.4	22,788	0.015	0.019	0.017	-
1736	6.8	22,741	0.136	0.136	0.136	0.009
1737	5.4	22,764	-	-	-	0.002
1738	5.8	22,693	-	-	-	0.015
1739	5.2	22,788	0.005	0.007	0.006	-
1740	6.2	22,693	0.020	0.024	0.022	-
1741	6.5	22,669	0.038	0.037	0.038	0.013
1742	7.9	22,788	0.004	0.010	0.007	0.035
1743	6.4	22,621	-	-	-	0.004
1744	6.0	22,645	0.024	0.028	0.026	0.027
1745	7.5	22,264	-	-	-	0.406
1746	6.1	22,693	0.007	0.010	0.008	0.023
1747	6.7	22,597	-	-	-	0.007
1748	4.3	22,454	0.058	0.059	0.058	0.015
1749	7.0	22,550	-	-	-	0.005

Spot #	pI	MW	K12 MG1655 <i>E. coli</i> silver gel LF762 #12 Spot %	K12 MG1655 <i>E. coli</i> silver gel LF762 #13 Spot %	Average K12 MG1655 <i>E. coli</i> silver gels Spot %	Cygnus Goat Anti- <i>E. coli</i> WB of K12 MG1655 <i>E. coli</i> LF762 #8 Spot %
1750	7.1	22,359	-	-	-	0.062
1751	6.3	22,574	0.011	0.017	0.014	-
1752	5.9	22,359	0.025	0.022	0.024	0.039
1753	5.7	22,407	0.017	0.027	0.022	-
1754	5.0	22,335	0.004	0.005	0.005	-
1755	5.6	22,335	0.006	0.009	0.008	-
1756	6.3	22,168	-	-	-	0.005
1757	5.7	22,240	0.039	0.054	0.046	-
1758	6.1	22,025	0.083	0.095	0.089	0.057
1759	6.8	22,240	0.014	0.020	0.017	-
1760	5.4	22,144	0.009	0.012	0.011	-
1761	6.7	22,049	0.034	0.039	0.036	0.015
1762	5.2	21,953	-	-	-	0.009
1763	6.3	21,715	0.486	0.553	0.520	0.197
1764	5.8	22,001	0.013	0.022	0.017	0.016
1765	5.5	21,977	0.021	0.016	0.018	0.004
1766	6.2	21,906	0.023	0.031	0.027	0.020
1767	6.4	21,739	0.053	0.058	0.055	0.021
1768	6.0	21,810	0.029	0.031	0.030	0.052
1769	4.9	21,691	-	-	-	0.003
1770	6.6	21,643	-	-	-	0.008
1771	4.4	21,763	0.010	0.017	0.013	0.003
1772	6.8	21,739	0.033	0.041	0.037	-
1773	7.1	21,619	0.042	0.095	0.068	0.055
1774	6.9	21,619	0.031	0.057	0.044	0.007
1775	5.7	21,691	0.099	0.129	0.114	-
1776	4.7	20,951	-	-	-	0.028
1777	5.9	21,572	0.013	0.011	0.012	-
1778	5.6	21,429	0.137	0.125	0.131	0.022
1779	5.6	21,524	0.379	0.401	0.390	0.084
1780	6.7	21,429	-	-	-	0.005
1781	6.6	21,476	0.008	0.014	0.011	0.007
1782	6.2	21,429	0.032	0.037	0.035	-
1783	5.8	21,476	0.019	0.024	0.021	0.017
1784	5.1	21,429	0.008	0.009	0.008	-
1785	6.1	21,095	0.057	0.104	0.081	0.135
1786	5.7	21,095	0.328	0.362	0.345	0.066
1787	6.0	21,190	0.013	0.023	0.018	-
1788	6.8	21,095	0.024	0.019	0.022	-
1789	5.2	21,047	-	-	-	0.003
1790	5.4	21,095	0.039	0.039	0.039	-
1791	5.2	20,951	-	-	-	0.005
1792	5.8	21,118	0.010	0.020	0.015	-
1793	6.3	20,951	-	-	-	0.007
1794	7.7	20,451	0.432	0.539	0.485	0.598

Spot #	pI	MW	K12 MG1655 <i>E. coli</i> silver gel LF762 #12 Spot %	K12 MG1655 <i>E. coli</i> silver gel LF762 #13 Spot %	Average K12 MG1655 <i>E. coli</i> silver gels Spot %	Cygnus Goat Anti- <i>E. coli</i> WB of K12 MG1655 <i>E. coli</i> LF762 #8 Spot %
1795	7.0	21,023	0.008	0.012	0.010	-
1796	5.1	20,880	0.045	0.053	0.049	0.009
1797	7.0	20,713	0.025	0.060	0.042	-
1798	6.2	20,951	0.009	0.014	0.012	-
1799	5.8	20,474	0.068	0.077	0.072	0.223
1800	5.8	20,832	0.014	0.017	0.015	-
1801	6.2	20,689	-	-	-	0.055
1802	5.5	20,785	0.018	0.016	0.017	0.051
1803	6.4	20,808	0.060	0.065	0.063	-
1804	4.4	20,689	0.007	0.010	0.009	-
1805	6.0	20,522	0.010	0.008	0.009	-
1806	6.7	20,451	-	-	-	0.028
1807	5.6	20,451	-	-	-	0.045
1808	5.4	20,474	0.008	0.018	0.013	-
1809	5.7	20,474	0.013	0.015	0.014	0.026
1810	7.3	19,950	0.218	0.300	0.259	0.235
1811	5.9	20,331	0.013	0.012	0.013	-
1812	6.1	20,331	0.070	0.087	0.079	0.052
1813	6.3	19,950	0.076	0.090	0.083	0.272
1814	5.3	20,284	0.008	0.011	0.010	0.008
1815	5.1	20,188	0.018	0.021	0.019	0.014
1816	6.4	20,260	0.005	0.008	0.007	-
1817	5.5	20,021	0.222	0.237	0.230	0.134
1818	5.2	20,117	-	-	-	0.008
1819	6.2	19,950	-	-	-	0.082
1820	7.0	20,045	0.010	0.017	0.013	-
1821	6.6	19,950	-	-	-	0.017
1822	5.6	20,069	0.010	0.017	0.014	0.043
1823	5.7	20,069	0.013	0.017	0.015	0.031
1824	6.2	19,878	-	-	-	0.122
1825	6.8	19,950	0.013	0.014	0.014	0.008
1826	6.6	19,902	0.006	0.010	0.008	0.018
1827	7.7	19,282	0.439	0.335	0.387	2.254
1828	7.0	19,878	0.008	0.035	0.022	-
1829	5.4	19,830	-	-	-	0.003
1830	6.0	19,568	0.749	0.706	0.728	0.022
1831	5.6	19,520	-	-	-	0.090
1832	5.3	19,711	0.032	0.043	0.037	0.026
1833	6.5	19,735	0.010	0.010	0.010	-
1834	5.8	19,568	0.152	0.161	0.156	0.198
1835	7.1	19,711	0.010	0.012	0.011	0.009
1836	6.7	19,592	0.055	0.067	0.061	0.062
1837	5.9	19,735	0.011	0.017	0.014	0.016
1838	4.8	19,639	0.007	0.007	0.007	-
1839	5.5	19,544	-	-	-	0.019

Spot #	pI	MW	K12 MG1655 <i>E. coli</i> silver gel LF762 #12 Spot %	K12 MG1655 <i>E. coli</i> silver gel LF762 #13 Spot %	Average K12 MG1655 <i>E. coli</i> silver gels Spot %	Cygnus Goat Anti- <i>E. coli</i> WB of K12 MG1655 <i>E. coli</i> LF762 #8 Spot %
1840	6.0	19,687	0.006	0.010	0.008	0.010
1841	5.7	19,592	0.030	0.032	0.031	-
1842	7.0	19,425	0.115	0.160	0.138	0.028
1843	5.6	19,520	0.018	0.041	0.030	0.058
1844	5.2	19,282	0.042	0.039	0.041	0.050
1845	6.4	19,377	-	-	-	0.014
1846	7.0	19,353	0.012	0.036	0.024	0.010
1847	6.5	19,162	0.072	0.117	0.094	0.031
1848	6.6	19,091	-	-	-	0.029
1849	5.9	19,234	0.008	0.013	0.010	-
1850	6.3	19,067	0.209	0.153	0.181	0.192
1851	6.1	19,067	0.237	0.254	0.246	-
1852	6.2	19,186	0.033	0.044	0.039	0.041
1853	7.4	18,184	0.877	1.126	1.001	3.654
1854	5.3	18,995	0.363	0.415	0.389	0.157
1855	6.0	19,138	0.015	0.020	0.017	0.059
1856	6.8	19,138	-	-	-	0.013
1857	5.5	19,115	0.009	0.010	0.009	0.045
1858	5.7	19,067	0.033	0.032	0.032	0.038
1859	5.8	18,876	-	-	-	0.012
1860	5.4	18,948	0.023	0.033	0.028	0.027
1861	6.7	18,948	0.010	0.018	0.014	0.024
1862	7.1	18,948	0.012	0.020	0.016	0.027
1863	5.8	18,757	0.048	0.063	0.055	0.038
1864	7.0	18,494	0.024	0.053	0.038	0.059
1865	6.1	18,757	0.021	0.029	0.025	0.026
1866	7.5	17,445	0.390	0.799	0.595	4.813
1867	5.6	18,590	0.016	0.015	0.016	0.117
1868	6.2	18,709	0.008	0.008	0.008	-
1869	5.0	18,518	0.021	0.018	0.019	-
1870	4.9	18,590	0.005	0.005	0.005	-
1871	5.9	18,494	-	-	-	0.053
1872	6.5	18,423	-	-	-	0.078
1873	5.7	18,542	0.029	0.038	0.033	0.056
1874	6.5	18,280	0.083	0.103	0.093	0.102
1875	5.5	18,256	-	-	-	0.007
1876	5.4	18,471	0.006	0.011	0.008	0.004
1877	7.1	18,137	0.054	0.110	0.082	0.405
1878	6.0	18,351	0.011	0.007	0.009	0.008
1879	5.3	18,375	0.006	0.005	0.006	-
1880	6.9	18,280	0.048	0.062	0.055	0.042
1881	6.3	18,280	0.179	0.203	0.191	0.060
1882	5.2	18,113	0.013	0.016	0.014	-
1883	6.7	18,113	0.127	0.156	0.141	0.188
1884	5.7	18,041	0.019	0.024	0.022	0.123

Spot #	pI	MW	K12 MG1655 <i>E. coli</i> silver gel LF762 #12 Spot %	K12 MG1655 <i>E. coli</i> silver gel LF762 #13 Spot %	Average K12 MG1655 <i>E. coli</i> silver gels Spot %	Cygnus Goat Anti- <i>E. coli</i> WB of K12 MG1655 <i>E. coli</i> LF762 #8 Spot %
1885	5.6	17,826	-	-	-	0.231
1886	4.6	17,993	0.008	0.008	0.008	-
1887	4.9	17,874	0.006	0.008	0.007	-
1888	5.7	17,922	-	-	-	0.015
1889	6.8	17,922	0.015	0.012	0.014	0.022
1890	6.1	17,683	0.067	0.078	0.072	0.084
1891	6.2	17,779	0.017	0.018	0.018	0.030
1892	5.1	17,922	0.003	0.004	0.004	-
1893	5.4	17,755	0.015	0.011	0.013	0.006
1894	5.9	17,779	0.021	0.023	0.022	0.149
1895	6.3	17,779	0.241	0.259	0.250	0.044
1896	5.3	17,803	0.002	0.007	0.004	0.004
1897	6.0	17,588	0.033	0.041	0.037	0.219
1898	6.9	17,707	0.032	0.052	0.042	0.033
1899	6.5	17,445	0.305	0.210	0.258	0.056
1900	6.4	17,397	0.053	0.065	0.059	0.039
1901	4.3	17,397	-	-	-	0.010
1902	5.1	17,278	0.039	0.046	0.043	-
1903	5.5	17,349	-	-	-	0.002
1904	5.7	17,397	0.016	0.025	0.020	-
1905	5.3	17,349	0.007	0.012	0.009	-
1906	5.2	17,111	-	-	-	0.003
1907	5.3	17,373	-	-	-	0.002
1908	5.7	17,254	-	-	-	0.017
1909	7.5	16,037	0.823	0.874	0.848	1.449
1910	6.2	17,254	-	-	-	0.042
1911	6.3	17,230	0.044	0.040	0.042	0.056
1912	6.1	17,015	-	-	-	0.036
1913	6.5	17,039	0.099	0.114	0.106	0.022
1914	5.5	16,920	0.017	0.019	0.018	-
1915	5.7	16,920	0.008	0.010	0.009	-
1916	6.7	16,848	0.039	0.105	0.072	0.010
1917	6.8	16,777	0.178	0.126	0.152	0.009
1918	4.3	15,775	-	-	-	0.217
1919	6.0	16,634	0.017	0.022	0.019	-
1920	6.3	16,467	0.381	0.385	0.383	0.178
1921	6.1	16,586	0.032	0.027	0.030	0.035
1922	6.2	16,562	0.025	0.027	0.026	-
1923	6.9	16,610	0.032	0.050	0.041	0.007
1924	6.4	16,467	0.140	0.177	0.158	0.092
1925	6.5	16,324	1.123	1.197	1.160	0.055
1926	5.0	16,395	0.029	0.031	0.030	0.059
1927	5.3	16,395	0.081	0.105	0.093	-
1928	5.6	16,491	0.021	0.022	0.021	-
1929	5.8	16,443	0.067	0.056	0.061	0.017

Spot #	pI	MW	K12 MG1655 <i>E. coli</i> silver gel LF762 #12 Spot %	K12 MG1655 <i>E. coli</i> silver gel LF762 #13 Spot %	Average K12 MG1655 <i>E. coli</i> silver gels Spot %	Cygnus Goat Anti- <i>E. coli</i> WB of K12 MG1655 <i>E. coli</i> LF762 #8 Spot %
1930	5.2	16,228	0.006	0.007	0.006	0.005
1931	6.7	16,276	0.118	0.098	0.108	0.051
1932	6.8	16,133	0.213	0.224	0.219	0.055
1933	7.7	15,918	1.068	1.187	1.128	0.677
1934	5.5	15,990	0.077	0.124	0.101	-
1935	6.9	15,942	0.075	0.137	0.106	0.238
1936	7.1	15,990	0.017	0.030	0.024	-
1937	6.2	15,703	-	-	-	0.031
1938	6.0	15,846	0.039	0.054	0.047	0.025
1939	6.1	15,846	0.021	0.026	0.024	0.040
1940	5.6	15,775	0.050	0.068	0.059	0.100
1941	5.4	15,918	0.025	0.013	0.019	0.005
1942	5.8	15,846	0.047	0.064	0.055	0.019
1943	5.3	15,632	0.018	0.024	0.021	-
1944	5.0	15,775	0.012	0.013	0.013	0.010
1945	7.7	14,916	0.512	0.493	0.502	0.400
1946	6.4	15,727	0.013	0.015	0.014	0.023
1947	6.3	15,703	0.013	0.024	0.019	0.017
1948	5.2	15,179	-	-	-	0.038
1949	6.5	15,298	0.065	0.077	0.071	0.290
1950	6.7	15,202	-	-	-	0.259
1951	5.4	15,489	0.054	0.044	0.049	0.017
1952	5.7	15,536	0.038	0.063	0.051	-
1953	6.8	15,346	0.069	0.071	0.070	0.151
1954	4.1	15,012	-	-	-	0.018
1955	7.6	14,367	0.429	0.597	0.513	0.474
1956	5.8	15,322	0.045	0.064	0.054	-
1957	4.7	14,105	-	-	-	0.457
1958	5.9	15,131	0.042	0.055	0.049	-
1959	6.0	15,012	0.027	0.039	0.033	0.048
1960	6.1	15,083	0.009	0.008	0.008	-
1961	5.4	14,845	-	-	-	0.027
1962	5.6	15,012	0.013	0.017	0.015	-
1963	7.3	14,821	0.055	0.062	0.058	0.047
1964	6.3	14,654	0.031	0.043	0.037	0.138
1965	6.2	14,892	-	-	-	0.019
1966	5.7	14,749	0.058	0.056	0.057	0.008
1967	6.9	14,463	0.045	0.074	0.060	0.142
1968	7.7	14,081	0.474	0.352	0.413	0.393
1969	7.2	14,558	-	-	-	0.051
1970	5.5	14,606	0.006	0.015	0.011	-
1971	5.8	14,558	0.011	0.017	0.014	0.006
1972	5.9	14,487	0.232	0.246	0.239	0.063
1973	5.3	14,439	-	-	-	0.009
1974	5.6	14,391	-	-	-	0.076

Spot #	pI	MW	K12 MG1655 <i>E. coli</i> silver gel LF762 #12 Spot %	K12 MG1655 <i>E. coli</i> silver gel LF762 #13 Spot %	Average K12 MG1655 <i>E. coli</i> silver gels Spot %	Cygnus Goat Anti- <i>E. coli</i> WB of K12 MG1655 <i>E. coli</i> LF762 #8 Spot %
1975	6.0	14,511	0.020	0.035	0.028	-
1976	5.6	14,439	0.025	0.024	0.025	0.008
1977	6.1	14,344	0.021	0.028	0.024	0.083
1978	7.1	14,320	-	-	-	0.023
1979	6.2	14,367	0.024	0.032	0.028	0.055
1980	7.6	13,707	0.837	0.734	0.785	0.552
1981	5.0	14,081	0.025	0.026	0.025	0.041
1982	4.5	13,438	-	-	-	0.334
1983	5.2	13,927	0.092	0.117	0.104	0.187
1984	6.7	14,129	-	-	-	0.178
1985	4.3	14,010	-	-	-	0.026
1986	5.7	13,946	0.018	0.046	0.032	0.047
1987	7.2	14,010	0.011	0.016	0.014	-
1988	7.2	13,937	0.037	0.038	0.038	0.026
1989	5.6	13,937	0.060	0.072	0.066	-
1990	6.0	13,831	0.109	0.108	0.109	0.200
1991	6.3	13,898	-	-	-	0.038
1992	6.8	13,956	0.013	0.013	0.013	0.007
1993	5.8	13,946	0.045	0.050	0.047	0.008
1994	6.2	13,783	0.762	0.851	0.806	0.517
1995	7.7	13,601	0.384	0.318	0.351	0.497
1996	5.3	13,898	0.005	0.007	0.006	0.021
1997	6.4	13,879	0.329	0.355	0.342	-
1998	6.5	13,774	0.505	0.567	0.536	0.097
1999	6.6	13,803	0.026	0.047	0.037	0.015
2000	6.1	13,841	0.034	0.035	0.035	0.077
2001	5.4	13,793	0.014	0.017	0.015	0.018
2002	7.1	13,764	0.073	0.082	0.078	0.135
2003	5.6	13,716	0.041	0.059	0.050	0.276
2004	6.7	13,812	0.039	0.050	0.045	0.173
2005	5.9	13,745	0.120	0.154	0.137	-
2006	4.3	13,601	-	-	-	0.054
2007	7.0	13,707	0.280	0.400	0.340	0.092
2008	6.8	13,745	0.032	0.046	0.039	-
2009	5.1	13,697	0.012	0.007	0.009	-
2010	5.3	13,697	-	-	-	0.030
2011	5.2	13,601	-	-	-	0.022
2012	6.4	13,707	0.029	0.054	0.041	0.006
2013	6.7	13,218	0.089	0.092	0.090	1.182
2014	6.9	13,649	0.026	0.043	0.035	0.006
2015	7.7	13,362	0.422	0.306	0.364	0.437
2016	7.2	13,573	0.005	0.005	0.005	0.003
2017	5.8	13,429	0.375	0.474	0.425	0.205
2018	6.8	13,544	0.114	0.134	0.124	-
2019	7.1	13,486	0.102	0.124	0.113	-

Spot #	pI	MW	K12 MG1655 <i>E. coli</i> silver gel LF762 #12 Spot %	K12 MG1655 <i>E. coli</i> silver gel LF762 #13 Spot %	Average K12 MG1655 <i>E. coli</i> silver gels Spot %	Cygnus Goat Anti- <i>E. coli</i> WB of K12 MG1655 <i>E. coli</i> LF762 #8 Spot %
2020	7.2	13,506	0.053	0.081	0.067	0.006
2021	5.3	13,477	0.006	0.007	0.006	-
2022	5.7	13,362	0.092	0.124	0.108	0.152
2023	7.1	13,448	0.026	0.030	0.028	-
2024	6.9	13,467	-	-	-	0.012
2025	6.9	13,438	0.018	0.029	0.024	0.033
2026	6.2	13,400	0.075	0.084	0.079	0.130
2027	5.9	13,400	0.015	0.025	0.020	0.028
2028	5.6	13,381	0.031	0.039	0.035	0.035
2029	6.5	13,314	0.032	0.057	0.044	0.270
2030	4.7	13,275	0.018	0.024	0.021	0.224
2031	6.0	13,381	0.008	0.011	0.009	0.006
2032	6.3	13,323	0.035	0.039	0.037	0.068
2033	6.4	13,323	0.009	0.012	0.010	0.035
2034	5.5	13,295	-	-	-	0.060
2035	5.2	13,160	0.344	0.365	0.354	0.221
2036	5.0	13,160	0.513	0.664	0.588	0.232
2037	4.4	12,988	-	-	-	0.025
2038	5.2	13,141	-	-	-	0.096
2039	6.9	13,189	-	-	-	0.327
2040	7.0	13,208	0.120	0.189	0.155	0.243
2041	4.3	12,930	-	-	-	0.040
2042	7.1	13,170	0.040	0.045	0.042	0.135
2043	5.5	13,122	0.037	0.056	0.046	-
2044	5.9	13,132	-	-	-	0.007
2045	6.1	12,978	0.092	0.143	0.117	-
2046	5.8	13,103	0.023	0.035	0.029	-
2047	7.8	12,835	0.261	0.275	0.268	0.444
2048	6.2	13,074	0.060	0.093	0.076	-
2049	5.4	13,026	-	-	-	0.013
2050	7.3	13,017	0.063	0.079	0.071	-
2051	5.7	13,036	0.031	0.044	0.038	-
2052	6.0	12,978	-	-	-	0.002
2053	6.3	12,959	0.023	0.027	0.025	0.069
2054	6.2	12,825	-	-	-	0.018
2055	7.5	12,930	0.195	0.126	0.161	0.135
2056	4.7	12,576	-	-	-	0.514
2057	5.5	12,883	-	-	-	0.038
2058	5.0	12,748	-	-	-	0.131
2059	7.0	12,873	0.011	0.014	0.013	-
2060	5.8	12,892	0.014	0.018	0.016	-
2061	5.6	12,854	0.008	0.009	0.008	-
2062	7.3	12,720	-	-	-	0.128
2063	7.2	12,806	0.006	0.009	0.007	-
2064	5.2	12,748	-	-	-	0.048



Spot #	pI	MW	K12 MG1655 <i>E. coli</i> silver gel LF762 #12 Spot %	K12 MG1655 <i>E. coli</i> silver gel LF762 #13 Spot %	Average K12 MG1655 <i>E. coli</i> silver gels Spot %	Cygnus Goat Anti- <i>E. coli</i> WB of K12 MG1655 <i>E. coli</i> LF762 #8 Spot %
2065	5.9	12,758	0.015	0.025	0.020	0.003
2066	5.4	12,739	0.022	0.021	0.021	0.020
2067	5.6	12,710	0.016	0.015	0.015	-
2068	7.2	12,643	-	-	-	0.026
2069	5.3	12,365	0.186	0.218	0.202	0.260
2070	5.7	12,662	-	-	-	0.004
2071	6.5	12,633	0.027	0.049	0.038	0.010
2072	7.1	12,653	0.008	0.008	0.008	-
2073	5.5	12,470	0.081	0.113	0.097	0.251
2074	6.0	12,585	0.148	0.192	0.170	0.007
2075	5.8	12,490	-	-	-	0.014
2076	6.1	12,566	-	-	-	0.011
2077	7.0	12,614	0.006	0.011	0.008	-
2078	6.7	12,605	0.034	0.040	0.037	-
2079	5.9	12,509	-	-	-	0.003
2080	5.1	12,423	0.013	0.011	0.012	0.021
2081	5.0	12,212	-	-	-	0.353
2082	5.2	11,905	0.513	0.404	0.458	1.033
2083	5.7	12,461	0.042	0.052	0.047	-
2084	5.4	12,423	-	-	-	0.019
2085	6.6	12,432	-	-	-	0.005
2086	6.7	12,451	0.035	0.053	0.044	-
2087	6.9	12,384	0.031	0.046	0.039	0.020
2088	6.4	12,394	0.019	0.035	0.027	0.008
2089	7.3	12,269	0.181	0.206	0.193	0.111
2090	7.1	11,407	4.080	4.767	4.423	27.341
2091	6.8	12,240	-	-	-	0.018
2092	6.7	12,164	-	-	-	0.013
2093	5.9	12,240	0.026	0.043	0.035	-
2094	5.6	12,202	0.018	0.030	0.024	0.017
2095	6.1	12,240	0.031	0.045	0.038	-
2096	5.4	12,058	-	-	-	0.147
2097	5.7	12,145	-	-	-	0.008
2098	5.9	12,116	0.015	0.019	0.017	0.022
2099	6.4	12,010	0.136	0.285	0.210	0.112
2100	6.9	12,049	-	-	-	0.051
2101	6.2	11,809	0.138	0.130	0.134	-
2102	7.2	12,087	0.040	0.046	0.043	0.038
2103	5.5	12,039	0.015	0.026	0.020	0.041
2104	7.0	12,068	0.011	0.020	0.016	0.031
2105	7.1	11,982	-	-	-	0.139
2106	6.1	12,020	0.027	0.046	0.037	0.003
2107	5.6	12,010	0.014	0.020	0.017	-
2108	6.0	11,991	-	-	-	0.004
2109	5.8	11,656	-	-	-	0.138

<b>Spot #</b>	<b>pI</b>	<b>MW</b>	<b>K12 MG1655 <i>E. coli</i> silver gel LF762 #12 Spot %</b>	<b>K12 MG1655 <i>E. coli</i> silver gel LF762 #13 Spot %</b>	<b>Average K12 MG1655 <i>E. coli</i> silver gels Spot %</b>	<b>Cygnus Goat Anti-<i>E. coli</i> WB of K12 MG1655 <i>E. coli</i> LF762 #8 Spot %</b>
2110	5.1	11,656	0.039	0.033	0.036	-
2111	5.3	11,780	-	-	-	0.018
2112	5.5	11,752	-	-	-	0.141
2113	6.5	11,790	0.018	0.032	0.025	-
2114	5.4	11,617	-	-	-	0.025
2115	7.0	11,704	0.006	0.011	0.009	0.031
2116	5.7	11,502	0.012	0.015	0.014	0.027
2117	5.5	11,272	-	-	-	0.337
2118	5.7	11,263	0.011	0.010	0.010	0.011
2119	5.3	11,148	0.015	0.027	0.021	0.019
2120	5.5	11,090	0.005	0.012	0.008	0.033

## Materials and Methods

Two-dimensional electrophoresis was performed according to the carrier ampholine method of isoelectric focusing (Kendrick, N., G. Powers, J. Johansen, M. Hoelter, A. Koll, S. Carlson, D. Channaveerappa, and C.C. Darie. *PLoS One*, 2020. 15(6): p. e0234645.) by Kendrick Labs, Inc. (Madison, WI). Isoelectric focusing was carried out in a glass tube of inner diameter 3.3 mm using 2.0% pH 3-10 Isodalt Servalytes (Serva, Heidelberg, Germany) for 20,000 volt-hrs. One  $\mu\text{g}$  (PVDF) or 100 ng (silver) of an IEF internal standard, tropomyosin, was added to each sample. This protein migrates as a doublet with lower polypeptide spot of MW 33,000 and pI 5.2; an arrow on the stained gels marks its position. The enclosed tube gel pH gradient plot for this set of Servalytes was determined with a surface pH electrode.

After equilibration for 10 min in buffer "O" (10% glycerol, 50mM dithiothreitol, 2.3% SDS and 0.0625 M tris, pH 6.8), each tube gel was sealed to the top of a stacking gel that overlaid a 10% acrylamide slab gel (1.0 mm thick). SDS slab gel electrophoresis was carried out for about 5 hrs at 25 mA/gel. The following proteins (MilliporeSigma) were used as molecular weight standards: myosin (220,000), phosphorylase A (94,000), catalase (60,000), actin (43,000), carbonic anhydrase (29,000), and lysozyme (14,000). These standards appear as bands at the basic edge of the silver-stained (Oakley, B.R., Kirsch, D.R. and Moris, N.R. *Anal. Biochem.* 105:361-363, 1980) 10% acrylamide slab gels. The gels were dried between sheets of cellophane paper with the acid edge to the left.

After slab gel electrophoresis, the gel for blotting was placed in transfer buffer (10 mM CAPS, pH 11.0, 10% methanol) and transblotted onto a PVDF membrane overnight at 225 mA and approximately 100 volts/two gels. The same proteins (MilliporeSigma) were used as molecular weight standards: myosin (220,000), phosphorylase A (94,000), catalase (60,000), actin (43,000), carbonic anhydrase (29,000), and lysozyme (14,000). These standards appear as bands at the basic edge of the Coomassie Brilliant Blue R-250-stained membrane.

## Western Blotting Methods

The blot was stained with Coomassie Brilliant Blue R-250, desktop scanned, destained in 100% methanol, and rinsed briefly with Tween-20 tris buffer saline (TTBS). The blot was blocked for two hours in 5% Nonfat Dry Milk (NFDM) in TTBS. The blot was then incubated in primary antibody solution (Goat Anti-*E. coli* [Cygnus, Cat. # AP117, and Lot # 99] diluted to 0.5  $\mu\text{g}/\text{ml}$  in 2% NFDM TTBS) overnight and rinsed 3 x 10 minutes in TTBS. The blot was then placed in secondary antibody (Anti-Goat IgG-HRP [Sigma, Cat. # A5420, and Lot # 090M4822] 1:10,000 diluted in 2% NFDM TTBS) for two hours, rinsed as above, treated with ECL, and exposed to GE Amersham Hyperfilm ECL (1-minute, 3-minute, and 10-minute exposures).

## Computerized Comparisons

Western blot films (1-minute and 3-minute exposures) and duplicate silver-stained gels were obtained from the sample and scanned with a laser densitometer (Model PDSI, Molecular Dynamics Inc, Sunnyvale, CA). The scanner was checked for linearity prior to scanning with a calibrated Neutral Density Filter Set (Melles Griot, Irvine, CA). The images were analyzed using SpotMap software (version 5.4, 2023, TotalLab, UK). The general method of computerized analysis for these pairs included image warping in conjunction with detailed manual checking. The lighter exposure of the western blot films was used to aid in spot matching for the overexposed areas of the dark exposure. Spots detected with the antibody were added to the master spot set even if not detectable by silver staining.

Spot % is equal to spot integrated density above background (volume) expressed as a percentage of total density above background of all spots measured.

## MW and pI Measurements

Note that the isoelectric point (pI) measurements are approximate being based on the pH gradient plot found on the next page for this batch of ampholines for conditions of 9M urea and room temperature of 22°C. Since the samples themselves may perturb the pH gradient, internal pI standards should be included if more exact pI measurements are required. The molecular weight and pI values for each spot are determined from algorithms applied to the reference image.

# pH Gradient Plot LF 3-10 Iso-dalt

Name: Kendrick Laboratories, Inc.

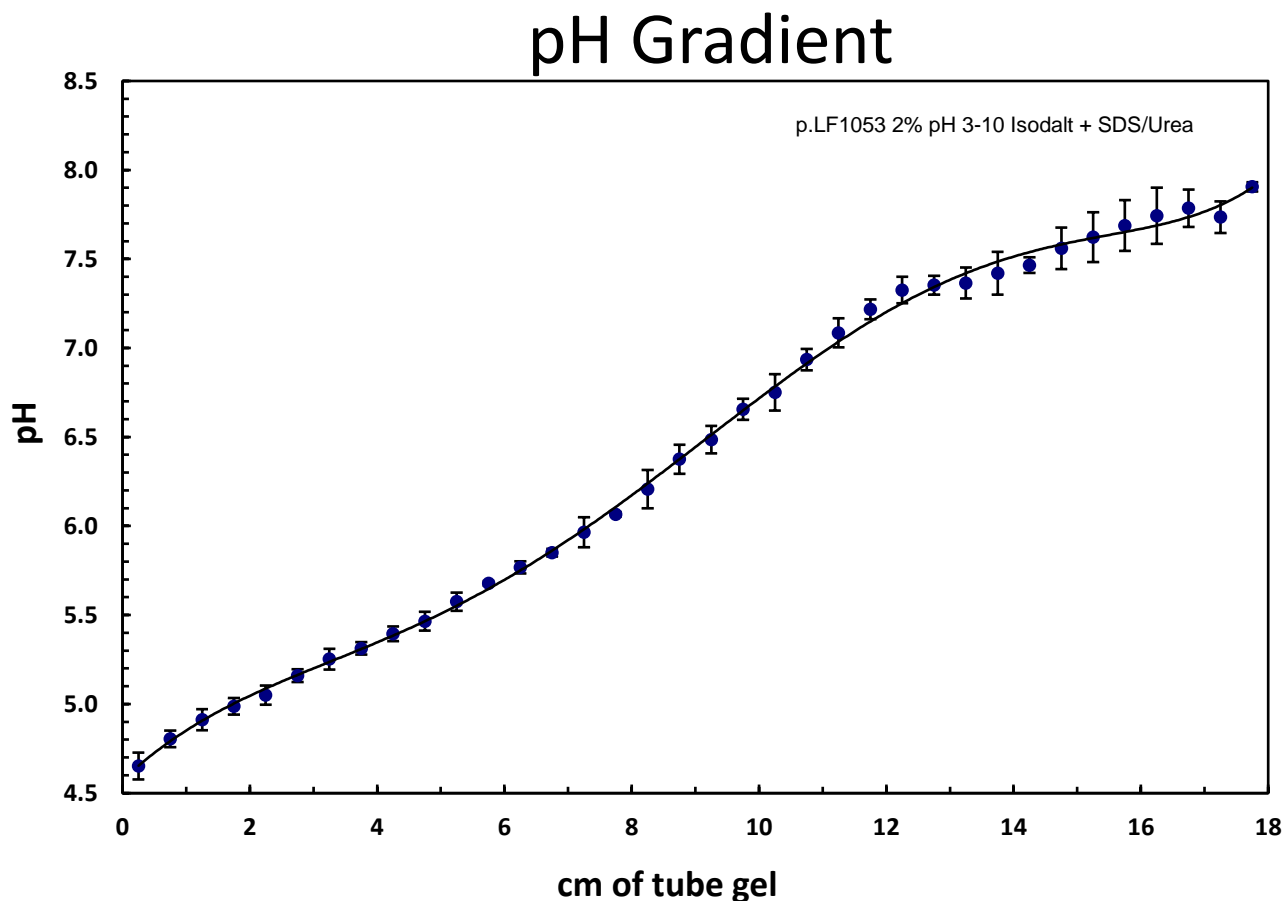
Date: 9/27/23

Sample(s): K12 MG1655 *E. coli*

Ampholines: 2% pH 3-10 Iso-dalt Servalytes

Conditions of IEF: 20,000 VHrs. (20 Hrs. at 1,000 V)

Comments:



This pH gradient was measured using a surface pH electrode for 6 blank IEF tube gels.

The dried slab gel for the second dimension is 20 cm wide with a 2D pattern about 18.5 cm wide. If SDS has been added to the sample, an SDS-NP-40 micelle migrates to the extreme acid end of the tube gel, constricting the pH gradient. In this case, the tube gels are poured long and the SDS bulb is cut off and discarded. The dried 2D pattern for samples containing SDS is also about 18 cm wide.

The black arrow on your 2D gel indicates our internal standard, Tropomyosin, pI 5.2 and molecular weight 32,700. The molecular weight standard lines are due to myosin (220,000), phosphorylase A (94,000), catalase (60,000), actin (43,000), carbonic anhydrase (29,000), and lysozyme (14,000) which have been added to the sealing agarose.

## Western Blotting Checksheet

**Client:** Kendrick E. coli HCP Test    **Company:** Kendrick Labs    **Date:** 3/4/13

**Samples:** K12 MG1655 E. coli

**Date Rcvd:** 2/27/13

**Gel ID:** LF762 #6-11

**Analyst:** MH

**Reagents:**

Reagent	Lot #
Tris Buffered Saline (TBS)	
Tween 20	
Block: Non Fat Dry Milk (NFDM)	

**Block**

**Blocking Solution:** 5% NFDM

**Incubation Time:** 2 hrs

**Primary Antibody**

Gel ID	1° Antibody	Dilution	Company	Cat #	Lot#	Rcvd	Stored
LF762 #6	Goat anti-E. coli	0.5 µg/mL	Cygnus	AP117	99	1/15/13	Fridge B2
LF762 #7	Goat anti-E. coli	0.5 µg/mL	Cygnus	AP117	99	1/15/13	Fridge B2
LF762 #8	Goat anti-E. coli	0.5 µg/mL	Cygnus	AP117	99	1/15/13	Fridge B2
LF762 #9	Goat anti-E. coli	0.5 µg/mL	Cygnus	AP117	99	1/15/13	Fridge B2
LF762 #10	Goat anti-E. coli	0.5 µg/mL	Cygnus	AP117	99	1/15/13	Fridge B2
LF762 #11	Goat anti-E. coli	0.5 µg/mL	Cygnus	AP117	99	1/15/13	Fridge B2

**Buffer:** 2% NFDM

**Incubation Time:** Overnight

**Secondary Antibody**

Gel ID	2° Antibody	Dilution	Company	Cat #	Lot#	Stored
LF762 #6	Anti Goat IgG-HRP	1:10,000	Sigma	A5420	090M4822	Freezer I
LF762 #7	Anti Goat IgG-HRP	1:10,000	Sigma	A5420	090M4822	Freezer I
LF762 #8	Anti Goat IgG-HRP	1:10,000	Sigma	A5420	090M4822	Freezer I
LF762 #9	Anti Goat IgG-HRP	1:10,000	Sigma	A5420	090M4822	Freezer I
LF762 #10	Anti Goat IgG-HRP	1:10,000	Sigma	A5420	090M4822	Freezer I
LF762 #11	Anti Goat IgG-HRP	1:10,000	Sigma	A5420	090M4822	Freezer I

**Buffer:** 2% NFDM

**Incubation Time:** 2 hours

**ECL Film Development**

**ECL:** Pierce ECL (Thermo)

**Cat#:** 32106

**Lot#:**

**Film:** GE Amersham Hyperfilm ECL **Cat#:** 28906838

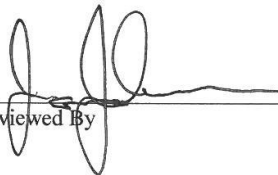
**Lot#:**

Gel ID	Exposure Time	Results
LF762 #6-11	1 <sup>st</sup> : 1 min	Good Light Exposure
	2 <sup>nd</sup> : 3 min	Good Exposure
	3 <sup>rd</sup> : 10 min	Good Dark Exposure

**Comments:** 11/20/13 - films say 0.1 µg/ml primary, however recent blots suggest (LF821 #13-14) suggest the actual dilution used was 0.5 µg/ml as it says above.

  
Person Completing Form

4/1/15  
Date

  
Reviewed By

4/1/15  
Date